



PowerBox factory

Power distribution equipment,
certified, custom-made,
easy to move and stack up

SYNTAX[®]



VALENTINI



Inventors, manufacturers, innovators.

Valentini is a dynamic, ever-evolving company operating in over 60 countries worldwide. For more than 30 years we have actively researched, designed and manufactured connectors for power, signal and hybrid applications. Our Syntax connectors have been used all over the world to manage power and electric signals in fields such as industry, automotive, broadcasting, shipbuilding & ship to shore power, international sporting events, live shows, military & national emergency management by agencies such as the Italian Civil Protection Department, and so many more. Valentini is an environmentally-aware company where respect for the environment is an integral part of the manufacturing process. Our team is motivated and mindful of details, as we know details are important in our pursuit of uncompromised quality and utmost reliability.

INDEX

04 PowerBox factory

Technical features
Typical applications
Assembling features

06 19" Rack Flightcase

63 amp | 125 amp | 250 amp | 400 amp

20 Cube series

Cube 3 and Cube 4
32 amp | 63 amp | 125 amp

28 Heavy-duty series

400 amp | 630 amp | custom

32 Soca Splitters and Cables

Break-Out Soca
Break-In Soca
Extension Cable Soca
Break-Out Box Soca

35 S2W box Syntax 2-Way

36 Turtle Line

Standard and Maxi version
32 amp | 63 amp

40 Brick Line

Brick-S 32 amp
Brick 32 amp
Brick-Maxi 32 amp

42 MiniBrick Line

Models with 5 Multistandard (Italian and German) | 16 amp
6 powerCON True1 | 16 amp
6 powerCON | 20 amp
Models with 4 CEE-17 | 16 amp
4 German standard (schuko) | 16 amp
4 British standard | 13 amp
4 Swiss standard | 16 amp
4 French standard (NCF) | 16 amp

48 Y-Splitters

Single-phase 2-way | 16 amp | 32 amp

51 S2W 480amp PowerSyntax

Multiplier
Phase inverters/adaptors



PowerBox factory

High quality equipment for the power distribution chain

PowerBox factory offers a vast range of PDUs, boxes, panels, adapters, cable extensions and splitters to safely manage power distribution, all designed and built to be fully compliant with the safety regulations. Our production includes innovative customized sub-assembly of component rails for our customers, utilizing PowerBox components to provide excellent cost savings and certified product dependability.



CEE Marking IEC 61439-1

Conformity declaration, inspection report, mechanical drawing, warnings and instructions. We have it all.



100% Customizable

In addition to our standard range, the extreme level of possible customizations provide an almost limitless number of solutions.



Reliable and performing

We want our products to keep their performances stable over time. You know you will always be able to count on them.



Long-term quality

Your investment is guaranteed in the long term, as our products are designed and built to have a long life span.



Maximum safety

Our number one priority is to make that our equipment is always safe for the operators.



Easy maintenance

Designed for easy maintenance and time-saving components replacement.



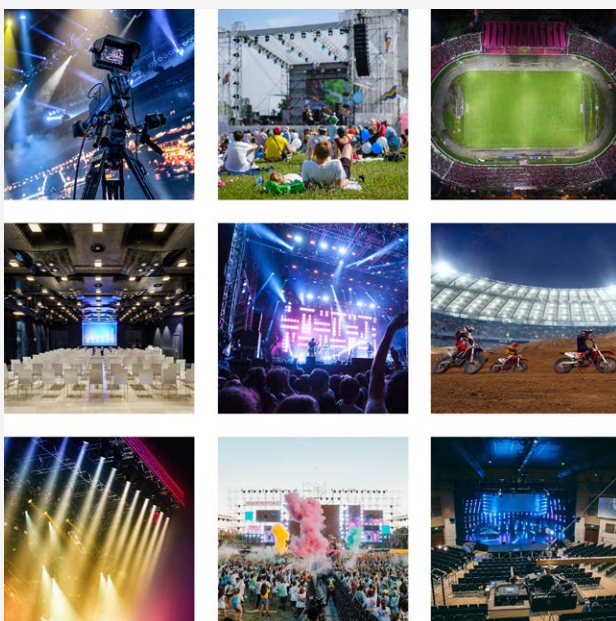
Simple to move

Because we know we live in a fast paced world and things are constantly changing.



Resistant to shocks

PowerBox designs its products to be performing even in the most harsh environments.



Typical applications

- Electrical power systems
- Power distribution
- Outdoor concerts
- Sporting events
- Outdoor/Indoor broadcasting
- Theatres
- Civil protection installations
- Military installations
- Lighting distribution
- Construction sites
- Industrial installations

Assembling features

PowerBox Factory products highlights

Take a journey with us and discover the care we put in choosing the most performant components, the smartest design solutions and all the technical details that contribute to make all PowerBox products so appreciated by our customers.



Safe wiring

Choosing the best cables and wiring practises

Internal wiring made with flame retardant PVC cables, according to IEC 332.3A regulations. Power cable, PVC insulated S17 quality, with special fire reaction characteristics according to Construction Products Regulation (CPR). All cables are carefully routed and tied to prevent mechanical strain on components.

Always in place

All components are safely secured

Plugs and sockets are fitted with anti corrosion carriage bolts and self-locking nuts, to prevent violations and damages from shocks and vibrations.



Extra resistant labels

Age-proof and usage-proof

Both type of labels we use in our products conform to the latest standards and are tested to resist over time and through the wear and tear of normal operations. Inputs and outputs have white markings on black rigid laminated PVC labels, while rating plates are printed on film PVC.

Hinged windows

IP54 or IP66 versions

Especially compact and robust design, made of shock-resistant polycarbonate.

- **IP54 version** (default): splashproof, self-closing window.
- **IP66 version** (on request): watertight, sprung-loaded window with integrated knurled screws, all metal parts are corrosion resistant.



Input lights

Red lights are used to signal input voltage presence.



Output lights

Green lights are used to signal outputs voltage presence.



Crimp insulation

Crimp connections are made with insulating wire ring terminals or pipe terminals in PA6 polyamide.



IEC 61439

Conformity to IEC 61439-1 and 61439-2 standard regulations, for electrical compliance in the EU.



19" Rack Flightcase

A power distro built to be on the move

63amp | 125amp | 250amp | 400amp

The PowerBox 19" Rack Flightcase family of products has been created to respond specifically to your needs. All the designs can be customized to the smallest detail: input and outputs, switches, protection devices, displays, connectors' colors, flightcase's color, layout and position of the accessories on the case, everything... From 16 to 400 Amp or even higher current ratings, and several operating voltage options. Easy operation as inputs and outputs all are quick-type plugs, sockets and connectors, with no special tools needed to set your P-BOX to work.



Easily stackable



Simple to move



Shock resistant



Extremely safe



Custom layouts

PowerBox, all-round quality

We choose only the best components and the smartest design solutions

To provide better overall performances and longer life span to our products, we use only components we can trust. Our 19" rack distros are easy to move thanks to their flightcase construction. They can be transported on wheels, by sea or by air. All components are fitted with screws resistant to vibrations, shocks and all forms of mechanical stress they might be exposed to, in order to ensure maximum safety over time. Easy everyday usage as all plugs, sockets, connectors and therefore cables are on the same side, while protections, displays and switches are all placed on the front side to be easily accessible to the operator. Care for details and thoughtful layout focused on ergonomics, with the bigger connectors always placed in the lower part of the panel, making it easier for the operators to plug and unplug even the heaviest cables.

Panels specifications

Made of black extruded PVC, 10mm thick, Dielectric strength 39 kV/mm (DIN IEC 60243-1), Shore hardness D (15 s) 82 (DIN EN ISO 868), Fire behaviour DIN 4102 B1 low flammability, Fire behaviour UL 94 V-0, resistant to mechanical stress, stable to temperature changes and with high dielectric strength (39 Kv/mm).

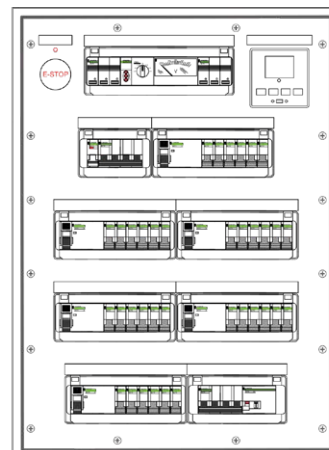
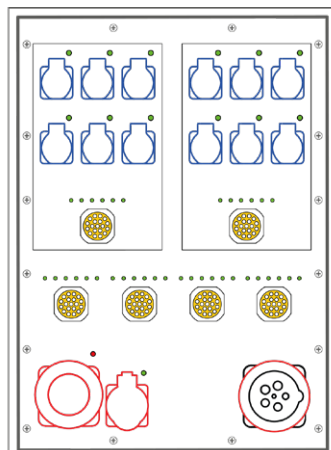


63amp

63amp | 15U

Part Number: **PBF63P15U**

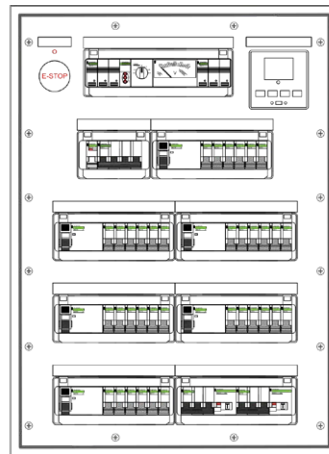
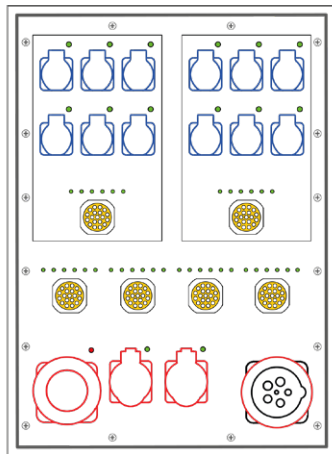
Front	1 voltmeter selector switch with analogic voltmeter + 1 set incoming leds
	1 MCB 63amp 4p-C 6.000A (MAIN) + 1 shunt release + 1 E-STOP
	1 digital multimeter 96x96mm with LCD graphic display
	2 x RCCB 40A 4p Idn=30mA AC + 12 x MCB 16amp 1pN-C (12 x CEE-17 16amp 3p / 2 x SYNTAX® SSX 19-pin)
	4 x RCCB 40amp 4p Idn=30mA AC + 24 x MCB 16amp 1pN-C (4 x SYNTAX® SSX 19-pin)
Rear	1 MCB 32amp 4p-C & RCCB Idn=30mA AC (CEE-17 32amp 5p)
	1 CEE-17 63amp 5p 400V IP67 (IN)
	1 CEE-17 63amp 5p 400V IP67 (LOOP)
	12 x CEE-17 16amp 3p 230V IP44 linked 2 x SYNTAX® SSX 19p IP67 (OUT; Socapex 419 compatible)
	4 x SYNTAX® SSX 19-pin IP67 (OUT; Socapex 419 compatible)
Technical data	1 CEE-17 32amp 5p 400V IP44 (OUT)
	CE Marking, IEC 61439-1 & 2 / PSC, Un : 400V 3pH+N+PE, fn : 50Hz, InA : 63amp, Icc : 6.000A, RDF : 50/100, IP : 44, Electrical insulation class : I (first)



63amp | 15U

Part Number: **PBF63P15U-27630**

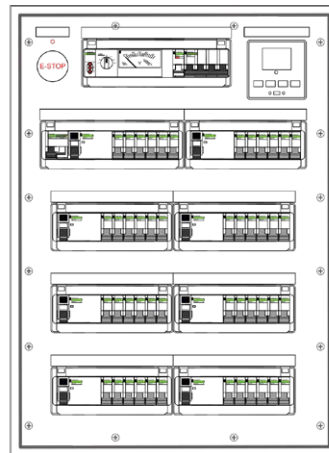
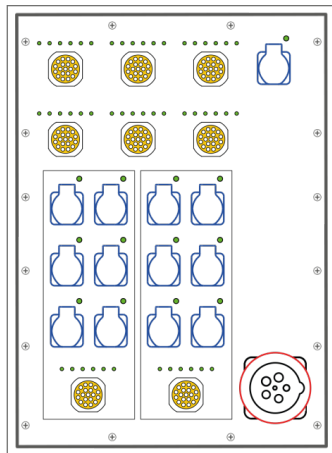
Front	1 voltmeter selector switch with analogic voltmeter + 1 set incoming leds
	1 MCB 63amp 4p-C 6.000A (MAIN) + 1 shunt release + 1 E-STOP
	1 digital multimeter 96x96mm with LCD graphic display
	2 x RCCB 40A 4p Idn=30mA AC + 12 x MCB 16amp 1pN-C (12 x CEE-17 16amp 3p / 2 x SYNTAX® SSX 19-pin)
	4 x RCCB 40amp 4p Idn=30mA AC + 24 x MCB 16amp 1pN-C (4 x SYNTAX® SSX 19-pin)
Rear	2 x RCBO 32amp 3pN-C Idn=30mA AC (2 x CEE-17 32amp 5p)
	1 CEE-17 63amp 5p 400V IP67 (IN)
	1 CEE-17 63amp 5p 400V IP67 (LOOP)
	12 x SCHUKO 16amp 3p 230V IP54 linked 2 x SYNTAX® SSX 19p IP67 (OUT; Socapex 419 compatible)
	4 x SYNTAX® SSX 19-pin IP67 (OUT; Socapex 419 compatible)
Technical data	2 x CEE-17 32amp 5p 400V IP44 (OUT)
	CE Marking, IEC 61439-1 & 2 / PSC, Un : 400V 3pH+N+PE, fn : 50Hz, InA : 63amp, Icc : 6.000A, RDF : 50/100, IP : 44, Electrical insulation class : I (first)



63amp | 15U

Part Number: **PBF63P15U-19724**

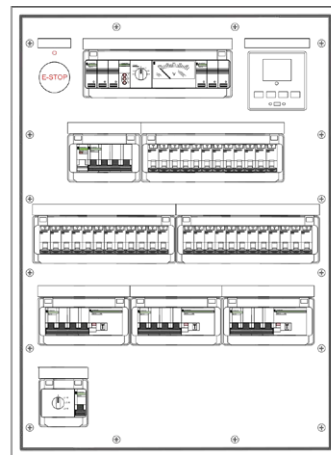
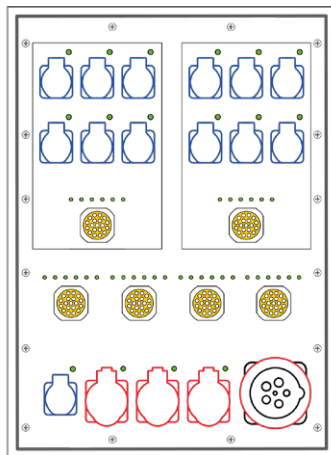
Front	1 voltmeter selector switch with analogic voltmeter + 1 set incoming leds
	1 MCB 63amp 4p-C 6.000A (MAIN) + 1 shunt release + 1 E-STOP
	1 digital multimeter 96x96mm with LCD graphic display
	2 x RCCB 40A 4p Idn=30mA AC + 12 x MCB 16amp 1pN-C (12 x CEE-17 16amp 3p / 2 x SYNTAX® SSX 19-pin)
	6 x RCCB 40amp 4p Idn=30mA AC + 36 x MCB 16amp 1pN-C (6 x SYNTAX® SSX 19-pin)
Rear	1 RCBO 16amp 1pN-C Idn=30mA AC (SCHUKO 16amp)
	1 CEE-17 63amp 5p 400V IP67 (IN)
	12 x CEE-17 16amp 3p 230V IP44 linked 2 x SYNTAX® SSX 19p IP67 (OUT; Socapex 419 compatible)
Technical data	6 x SYNTAX® SSX 19-pin IP67 (OUT; Socapex 419 compatible)
	1 SCHUKO 16amp 3p 230V IP54 (OUT)
Technical data	CE Marking, IEC 61439-1 & 2 / PSC, Un : 400V 3pH+N+PE, fn : 50Hz, InA : 63amp, Icc : 6.000A, RDF : 23/100, IP : 44, Electrical insulation class : I (first)



63amp | 15U

Part Number: **PBF63P15U-30581**

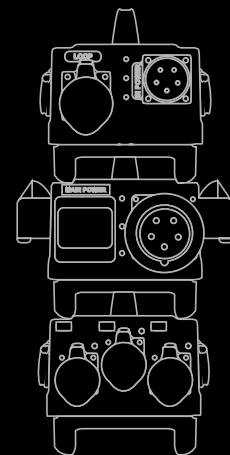
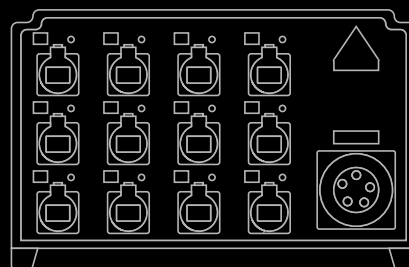
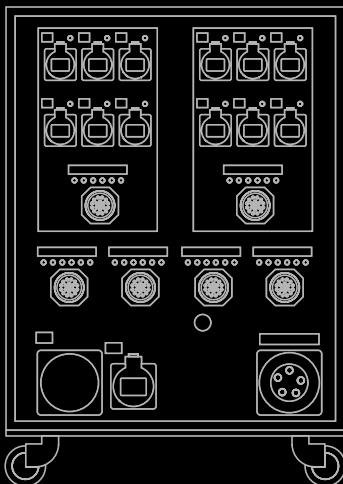
Front	1 voltmeter selector switch with analogic voltmeter + 1 set incoming leds
	1 MCB 63amp 4p-C 6.000A (MAIN) + 1 shunt release + 1 E-STOP
	1 digital multimeter 96x96mm with LCD graphic display
	12 x RCBO 16amp 1pN-C I _{dn} =30mA AC (12 x CEE-17 16amp 3p / 2 x SYNTAX® SSX 19-pin)
	24 x RCBO 16amp 1pN-C I _{dn} =30mA AC (4 x SYNTAX® SSX 19-pin)
	3 x RCBO 32amp 4p-C I _{dn} =300mA AC selective (3 x CEE-17 32amp 5p)
Rear	1 x MCB 16amp 1pN-C with selector switch L1N-L2N-L3N (1 CEE-17 16amp 3p / UPS)
	1 CEE-17 63amp 5p 400V IP67 (IN)
	12 x CEE-17 16amp 3p 230V IP44 linked 2 x SYNTAX® SSX 19p IP67 (OUT; Socapex 419 compatible)
	4 x SYNTAX® SSX 19-pin IP67 (OUT; Socapex 419 compatible)
	3 x CEE-17 32amp 5p 400V IP44 (OUT)
Technical data	1 CEE-17 16amp 3p 230V IP44 (OUT for UPS)
	CE Marking, IEC 61439-1 & 2 / PSC, Un : 400V 3pH+N+PE, fn : 50Hz, InA : 63amp, Icc : 6.000A, RDF : 20/100, IP : 44, Electrical insulation class : I (first)



Powerful and invisible

All components are balck to better blend into the set design

Although our products are beautiful and refined in all the details, we don't want them to steal your show! That's why all the layouts and components of products destined to the entertainment industry are available in black, to better hide themselves on stage.



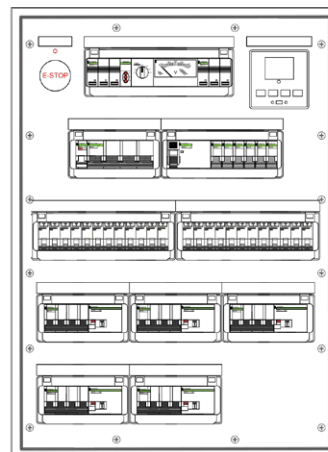
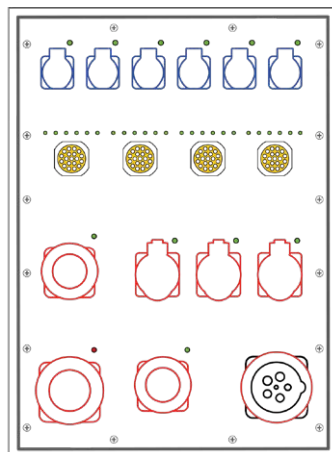
125amp



125amp | 15U

Part Number: **PBF125P15U**

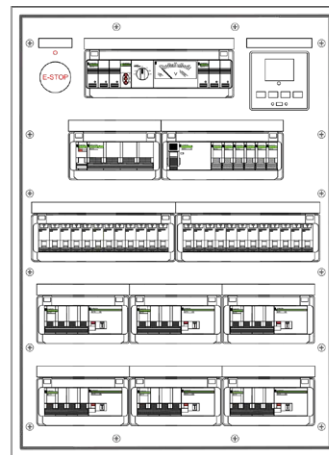
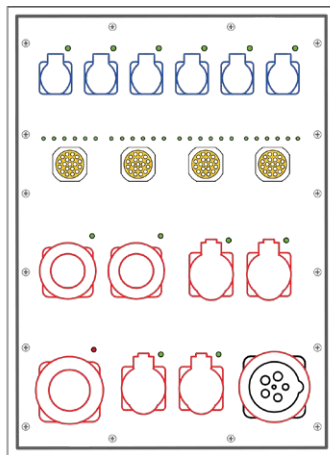
Front	1 voltmeter selector switch with analogic voltmeter + 1 set incoming leds
	1 MCB 125amp 4p-C 10.000A (MAIN) + 1 shunt release + 1 E-STOP
	1 digital multimeter 96x96mm with LCD graphic display
	1 RCCB 40amp 4p Idn=30mA AC + 6 x MCB 16amp 1pN-C (6 x CEE-17 16amp 3p)
	4 x RCCB 40amp 4p Idn=30mA AC + 24 x MCB 16amp 1pN-C (4 x SYNTAX® SSX 19-pin)
	3 x MCB 32amp 4p-C with earth leakage add-on block Idn=30mA AC (3 x CEE-17 32amp 5p)
Rear	2 x MCB 63amp 4p-C with earth leakage add-on block Idn=300mA AC (2 x CEE-17 63amp 5p)
	1 CEE-17 125amp 5p 400V IP67 (IN)
	1 CEE-17 125amp 5p 400V IP67 (LOOP)
	6 x CEE-17 16amp 3p 230V IP44 (OUT)
	4 x SYNTAX® SSX 19-pin IP67 (OUT; Socapex 419 compatible)
	3 x CEE-17 32amp 5p 400V IP44 (OUT)
Technical data	2 x CEE-17 63amp 5p 400V IP67 (OUT)
	CE Marking, IEC 61439-1 & 2 / PSC, Un : 400V 3pH+N+PE, fn : 50Hz, InA : 125amp, Icc : 6.000A, RDF : 50/100, IP : 44, Electrical insulation class : I (first)



125amp | 15U

Part Number: **PBF125P15U-27629**

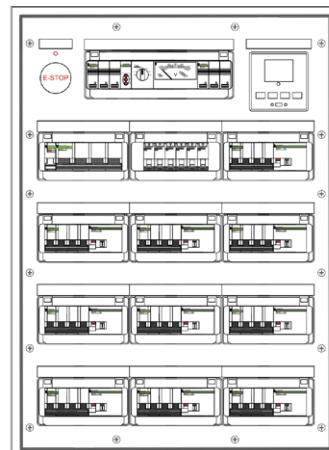
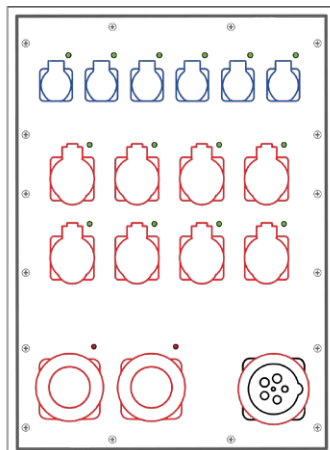
Front	1 voltmeter selector switch with analogic voltmeter + 1 set incoming leds
	1 MCB 125amp 4p-C 10.000A (MAIN) + 1 shunt release + 1 E-STOP
	1 digital multimeter 96x96mm with LCD graphic display
	1 RCCB 40amp 4p Idn=30mA AC + 6 x MCB 16amp 1pN-C (6 x CEE-17 16amp 3p)
	24 x RCBO 16amp 1pN-C Idn=30mA AC (4 x SYNTAX® SSX 19-pin)
	4 x MCB 32amp 4p-C with earth leakage add-on block Idn=30mA AC (4 x CEE-17 32amp 5p)
Rear	2 x MCB 63amp 4p-C with earth leakage add-on block Idn=300mA AC (2 x CEE-17 63amp 5p)
	1 CEE-17 125amp 5p 400V IP67 (IN)
	1 CEE-17 125amp 5p 400V IP67 (LOOP)
	6 x CEE-17 16amp 3p 230V IP44 (OUT)
	4 x SYNTAX® SSX 19-pin IP67 (OUT; Socapex 419 compatible)
	4 x CEE-17 32amp 5p 400V IP44 (OUT)
Technical data	2 x CEE-17 63amp 5p 400V IP67 (OUT)
	CE Marking, IEC 61439-1 & 2 / PSC, Un : 400V 3pH+N+PE, fn : 50Hz, InA : 125amp, Icc : 6.000A, RDF : 50/100, IP : 44, Electrical insulation class : I (first)



125amp | 15U

Part Number: **PBF125P15U-27545**

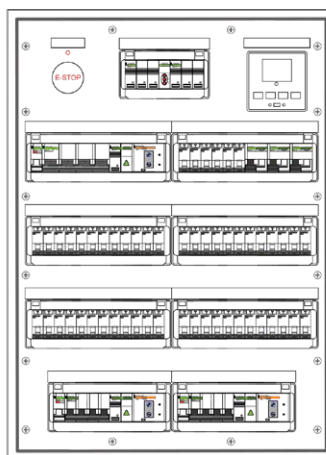
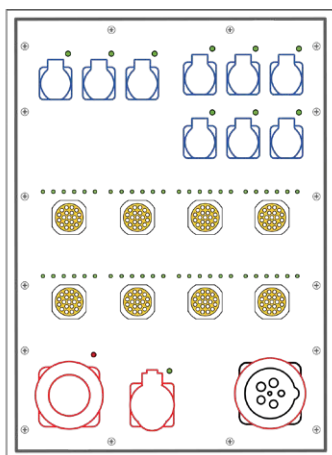
Front	1 voltmeter selector switch with analogic voltmeter + 1 set incoming leds
	1 MCB 125amp 4p-C 10.000A (MAIN) + 1 shunt release + 1 E-STOP
	1 digital multimeter 96x96mm with LCD graphic display
	6 x RCBO 16amp 1pN-C Idn=30mA AC (6 x CEE-17 16amp 3p)
	8 x MCB 32amp 4p-C with earth leakage add-on block Idn=30mA AC (8 x CEE-17 32amp 5p)
	2 x MCB 63amp 4p-C with earth leakage add-on block Idn=300mA AC (2 x CEE-17 63amp 5p)
Rear	1 CEE-17 125amp 5p 400V IP67 (IN)
	6 x CEE-17 16amp 3p 230V IP44 (OUT)
	8 x CEE-17 32amp 5p 400V IP44 (OUT)
	2 x CEE-17 63amp 5p 400V IP67 (OUT)
Technical data	CE Marking, IEC 61439-1 & 2 / PSC, Un : 400V 3pH+N+PE, fn : 50Hz, InA : 125amp, Icc : 6.000A, RDF : 30/100, IP : 44, Electrical insulation class : I (first)



125amp | 15U

Part Number: **PBF125P15U-25755**

Front	1 set incoming leds
	1 MCB 125amp 4p-C 10.000A (MAIN) + 1 shunt release + 1 earth leakage Idn/delay adjustable + 1 E-STOP
	1 digital multimeter 96x96mm with LCD graphic display
	6 x RCBO 16amp 1pN-C Idn=30mA AC (6 x SCHUKO 16amp)
	48 x RCBO 16amp 1pN-C Idn=30mA AC (8 x SYNTAX® SSX 19-pin)
	3 x RCBO 32amp 1pN-C Idn=30mA AC (3 x CEE-17 32amp 3p)
	1 MCB 32amp 4p-C + 1 shunt release + 1 earth leakage Idn/delay adjustable (1 CEE-17 32amp 5p)
Rear	1 MCB 63amp 4p-C + 1 shunt release + 1 earth leakage Idn/delay adjustable (1 CEE-17 63amp 5p)
	1 CEE-17 125amp 5p 400V IP67 (IN)
	6 x SCHUKO 16amp 3p 230V IP44 (OUT)
	8 x SYNTAX® SSX 19-pin IP67 (OUT; Socapex 419 compatible)
	3 x CEE-17 32amp 3p 230V IP44 (OUT)
	1 CEE-17 32amp 5p 400V IP44 (OUT)
Technical data	1 CEE-17 63amp 5p 400V IP67 (OUT)
	CE Marking, IEC 61439-1 & 2 / PSC, Un : 400V 3pH+N+PE, fn : 50Hz, InA : 125amp, Icc : 6.000A, RDF : 30/100, IP : 44, Electrical insulation class : I (first)



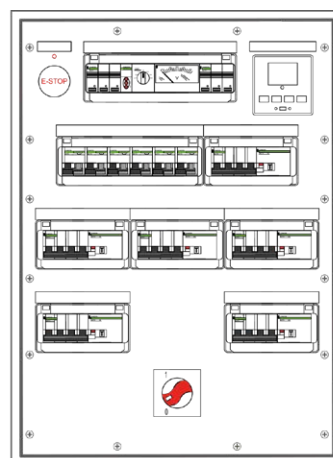
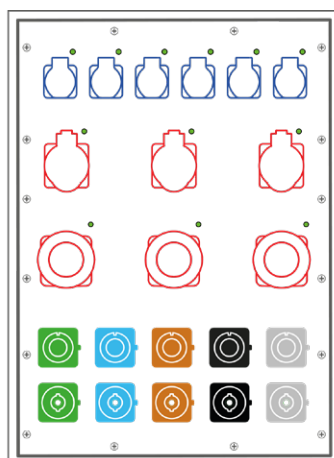


250amp

250amp | 15U

Part Number: **PBF400P15U-250633L**

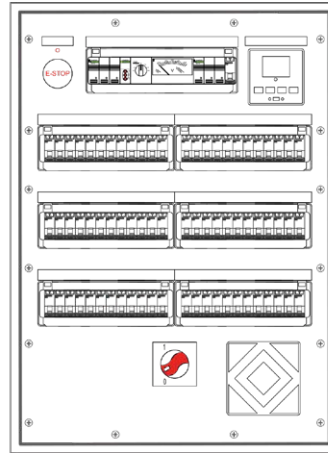
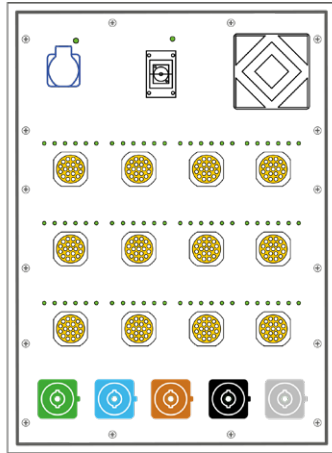
Front	1 voltmeter selector switch with analogic voltmeter + 1 set incoming leds
	1 MCCB 250amp 4p 25.000A (MAIN) + 1 shunt release + 1 E-STOP
	1 digital multimeter 96x96mm with LCD graphic display
	6 x RCBO 16amp 1pN-C Idn=0,03A AC (6 x CEE-17 16amp 3p)
	3 x MCB 32amp 4p-C with earth leakage add-on block Idn=30mA AC (3 x CEE-17 32amp 5p)
	3 x MCB 63amp 4p-C with earth leakage add-on block Idn=300mA AC (3 x CEE-17 63amp 5p).
Rear	5 x powerSYNTAX® 480amp L1-brown L2-black L3-grey N-blue PE-green 400V IP67 (IN ; powerlock compatible)
	5 x powerSYNTAX® 480amp L1-brown L2-black L3-grey N-blue PE-green 400V IP67 with IP67 caps (LOOP; powerlock compatible)
	6 x CEE-17 16amp 3p 230V IP44 (OUT)
	3 x CEE-17 32amp 5p 400V IP44 (OUT)
	3 x CEE-17 63amp 5p 400V IP67 (OUT)
Technical data	CE Marking, IEC 61439-1 & 2 / PSC, Un : 400V 3pH+N+PE, fn : 50Hz, InA : 400amp, InA (Main OUT) : 250amp, Icc : 6.000A, RDF : 60/100, IP : 44, Electrical insulation class : I (first).



250amp | 15U

Part Number: **PBF250P15U-22924**

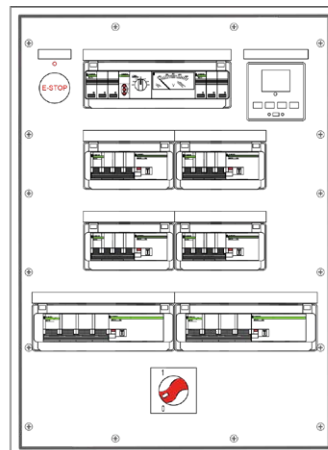
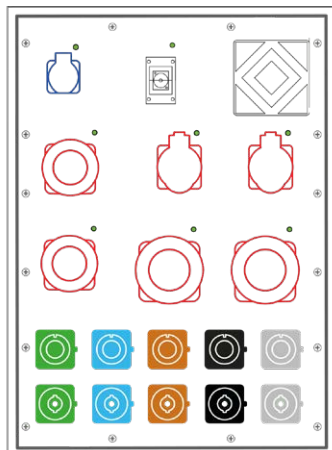
Front	1 voltmeter selector switch with analogic voltmeter + 1 set incoming leds 1 MCCB 250amp 4p 25.000A (MAIN) + 1 shunt release + 1 E-STOP 1 digital multimeter 96x96mm with LCD graphic display 1 RCBO 16amp 1pN-C Idn=0,03A AC (SCHUKO 16amp 3p) 72 x RCBO 16amp 1pN-C Idn=30mA AC (12 x SYNTAX® SSX 19-pin)
Rear	5 x powerSYNTAX® 480amp L1-brown L2-black L3-grey N-blue PE-green 400V IP67 (IN ; powerlock compatible) 1 SCHUKO 16amp 3p 230V IP44 (OUT) 12 x SYNTAX® SSX 19-pin IP67 (OUT; Socapex 419 compatible)
Technical data	CE Marking, IEC 61439-1 & 2 / PSC, Un : 400V 3pH+N+PE, fn : 50Hz, InA : 250amp, Icc : 6.000A, RDF : 62/100, IP : 44, Electrical insulation class : I (first).



250amp | 15U

Part Number: **PBF250P15U-27029**

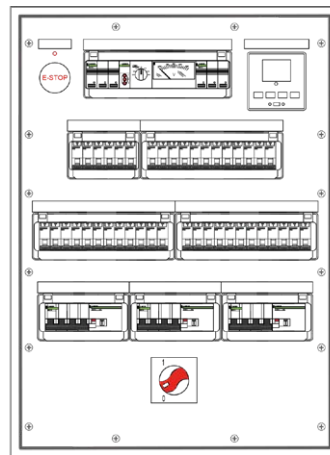
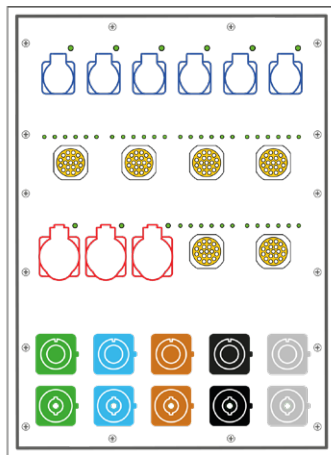
Front	1 voltmeter selector switch with analogic voltmeter + 1 set incoming leds 1 MCCB 250amp 4p 25.000A (MAIN) + 1 shunt release + 1 E-STOP 1 digital multimeter 96x96mm with LCD graphic display 2 x MCB 32amp 4p-C with earth leakage add-on block Idn=30mA AC (2 x CEE-17 32amp 5p) 2 x MCB 63amp 4p-C with earth leakage add-on block Idn=300mA AC (2 x CEE-17 63amp 5p) 2 x MCB 125amp 4p-C with earth leakage add-on block Idn=300mA AC (2 x CEE-17 125amp 5p)
Rear	5 x powerSYNTAX® 480amp L1-brown L2-black L3-grey N-blue PE-green 400V IP67 (IN ; powerlock compatible) 5 x powerSYNTAX® 480amp L1-brown L2-black L3-grey N-blue PE-green 400V IP67 with IP67 caps (LOOP ; powerlock compatible) 2 x CEE-17 32amp 5p 400V IP44 (OUT) 2 x CEE-17 63amp 5p 400V IP47 (OUT) 2 x CEE-17 125amp 5p 400V IP67 (OUT)
Technical data	CE Marking, IEC 61439-1 & 2 / PSC, Un : 400V 3pH+N+PE, fn : 50Hz, InA : 400amp, InA (Main OUT) : 250amp, Icc : 6.000A, RDF : 60/100, IP : 44, Electrical insulation class : I (first)



250amp | 15U

Part Number: **PBF250P15U-25509**

Front	1 voltmeter selector switch with analogic voltmeter + 1 set incoming leds
	1 MCCB 250amp 4p 25.000A (MAIN) + 1 shunt release + 1 E-STOP
	1 digital multimeter 96x96mm with LCD graphic display
	3 x RCBO 16amp 1pN-C Idn=0,03A AC (3 x SCHUKO 16amp 3p)
	3 x RCBO 16amp 1pN-C Idn=0,03A AC (3 x CEE-17 16amp 3p)
	36 x RCBO 16amp 1pN-C Idn=0,03A AC (6 x SYNTAX® SSX 19-pin)
Rear	3 x RCBO 32amp 4p-C Idn=30mA AC (3 x CEE-17 32amp 5p)
	5 x powerSYNTAX® 480amp L1-brown L2-black L3-grey N-blue PE-green 400V IP67 (IN ; powerlock compatible)
	5 x powerSYNTAX® 480amp L1-brown L2-black L3-grey N-blue PE-green 400V IP67 with IP67 caps (LOOP ; powerlock compatible)
	3 x SCHUKO 16amp 3p 230V IP44 (OUT)
	3 x CEE-17 16amp 3p 230V IP44 (OUT)
	6 x SYNTAX® SSX 19-pin IP67 (OUT; Socapex 419 compatible)
Technical data	3 x CEE-17 32amp 5p 400V IP44 (OUT)
	CE Marking, IEC 61439-1 & 2 / PSC, Un : 400V 3pH+N+PE, fn : 50Hz, InA : 400amp, InA (Main OUT) : 250amp, Icc : 6.000A, RDF : 60/100, IP : 44, Electrical insulation class : I (first)



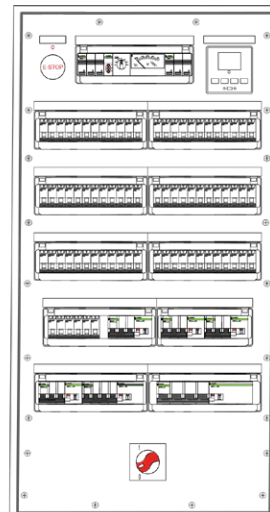
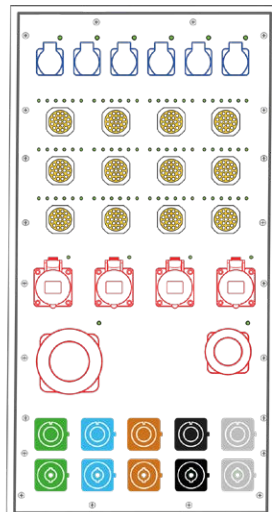
400amp



400amp | 24U

Part Number: **PBF400P24U-40064S11L**

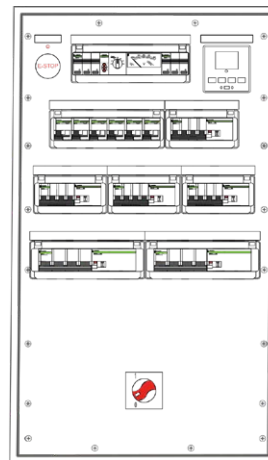
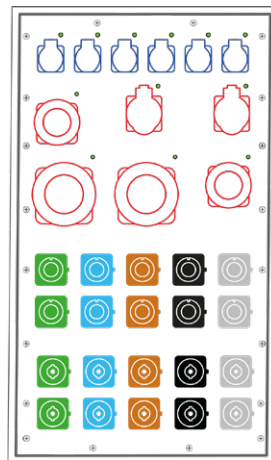
Front	1 voltmeter selector switch with analogic voltmeter + 1 set incoming leds
	1 MCCB 400amp 4p 36.000A (MAIN) + 1 shunt release + 1 E-STOP
	1 digital multimeter 96x96mm with LCD graphic display
	6 x RCBO 16amp 1pN-C 6.000/10.000A Idn=0,03A AC (6 x CEE-17 16amp 3p)
	72 x RCBO 16amp 1pN-C 6.000/10.000A Idn=30mA AC (12 x SYNTAX® SSX 19-pin)
	4 x MCB 32amp 3pN-C 6.000/10.000A with earth leakage add-on block Idn=30mA AC (4 x CEE-17 32amp 5p)
	1 MCB 63amp 4p-C 6.000/10.000A with earth leakage add-on block Idn=300mA AC (1 CEE-17 63amp 5p)
Rear	1 MCB 125amp 4p-C 10.000A with earth leakage add-on block Idn=300mA AC (1 CEE-17 125amp 5p)
	5 x powerSYNTAX® 480amp L1-brown L2-black L3-grey N-blue PE-green 400V IP67 (IN ; power-lock compatible)
	5 x powerSYNTAX® 480amp L1-brown L2-black L3-grey N-blue PE-green 400V IP67 with IP67 caps (LOOP ; powerlock compatible)
	6 x CEE-17 16amp 3p 230V IP44 (OUT)
	12 x SYNTAX® SSX 19p IP67 (OUT; Socapex 419 compatible)
Technical data	4 x CEE-17 32amp 5p 400V IP44 (OUT)
	1 CEE-17 63amp 5p 400V IP67 (OUT)
	1 CEE-17 125amp 5p 400V IP67 (OUT)
	CE Marking, IEC 61439-1 & 2 / PSC, Un : 400V 3pH+N+PE, fn : 50Hz, InA : 400amp, Icc : 10.000A, RDF : 50/100, IP : 44, Electrical insulation class : I (first)



400amp | 21U

Part Number: **PBF400P21U-25403**

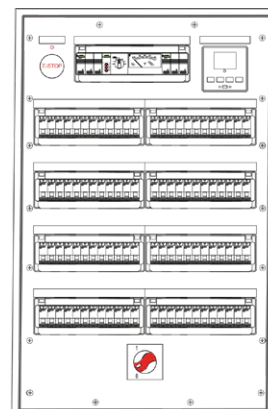
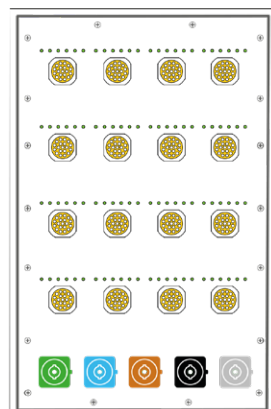
Front	1 voltmeter selector switch with analogic voltmeter + 1 set incoming leds 1 MCCB 400amp 4p 36.000A (MAIN) + 1 shunt release + 1 E-STOP 1 digital multimeter 96x96mm with LCD graphic display 6 x RCBO 16amp 1pN-C 6.000/10.000A Idn=0,03A AC (6 x CEE-17 16amp 3p) 2 x MCB 32amp 4p-C 6.000/10.000A with earth leakage add-on block Idn=30mA AC (2 x CEE-17 32amp 5p) 2 x MCB 63amp 4p-C 6.000/10.000A with earth leakage add-on block Idn=300mA AC (2 x CEE-17 63amp 5p) 2 x MCB 125amp 4p-C 10.000A with earth leakage add-on block Idn=300mA AC (2 x CEE-17 125amp 5p)
Rear	2 x 5 x powerSYNTAX® 480amp L1-brown L2-black L3-grey N-blue PE-green 400V IP67 (IN ; powerlock compatible) 2 x 5 x powerSYNTAX® 480amp L1-brown L2-black L3-grey N-blue PE-green 400V IP67 with IP67 caps (LOOP ; powerlock compatible) 6 x CEE-17 16amp 3p 230V IP44 (OUT) 2 x CEE-17 32amp 5p 400V IP44 (OUT) 2 x CEE-17 63amp 5p 400V IP67 (OUT) 2 x CEE-17 125amp 5p 400V IP67 (OUT)
Technical data	CE Marking, IEC 61439-1 & 2 / PSC, Un : 400V 3pH+N+PE, fn : 50Hz, InA : 400amp, Icc : 6.000A, RDF : 33/100, IP : 44, Electrical insulation class : I (first)



400amp | 20U

Part Number: **PBF400P20U-29302**

Front	1 voltmeter selector switch with analogic voltmeter + 1 set incoming leds 1 MCCB 400amp 4p 36.000A (MAIN) + 1 shunt release + 1 E-STOP 1 digital multimeter 96x96mm with LCD graphic display 96 x RCBO 16amp 1pN-C 6.000/10.000A Idn=30mA AC (16 x SYNTAX® SSX 19-pin)
Rear	5 x powerSYNTAX® 480amp L1-brown L2-black L3-grey N-blue PE-green 400V IP67 (IN ; powerlock compatible) 16 x SYNTAX® SSX 19-pin IP67 (OUT; Socapex 419 compatible)
Technical data	CE Marking, IEC 61439-1 & 2 / PSC, Un : 400V 3pH+N+PE, fn : 50Hz, InA : 400amp, Icc : 6.000A, RDF : 78/100, IP : 44, Electrical insulation class : I (first)

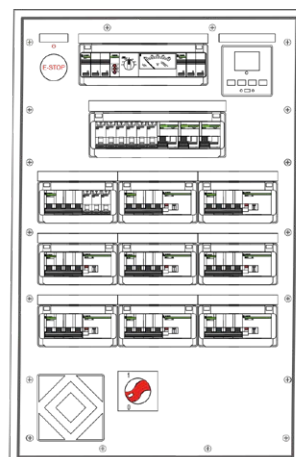
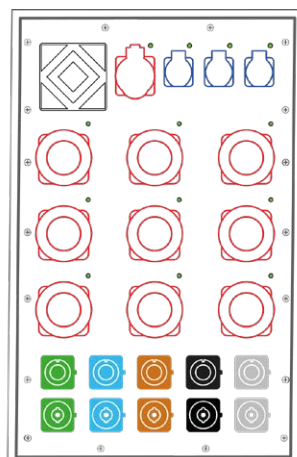




400amp | 20U

Part Number: **PBF400P20U-400319L**

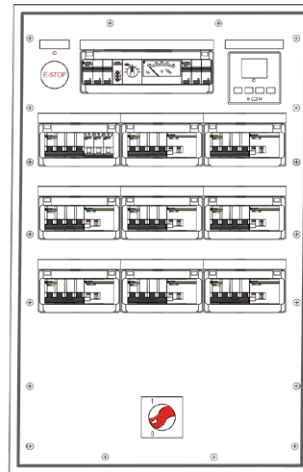
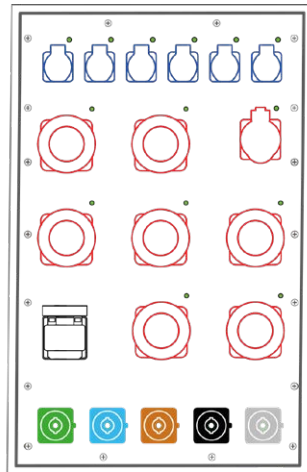
Front	1 voltmeter selector switch with analogic voltmeter + 1 set incoming leds
	1 MCCB 400amp 4p 36.000A (MAIN) + 1 shunt release + 1 E-STOP
	1 digital multimeter 96x96mm with LCD graphic display
	3 x RCBO 16amp 1p-C 6.000/10.000A Idn=0,03A AC (3 x CEE-17 16amp 3p)
	1 MCB 32amp 4p-C 6.000/10.000A with earth leakage add-on block Idn=30mA AC (1 CEE-17 32amp 5p)
Rear	9 x MCB 63amp 4p-C 6.000/10.000A with earth leakage add-on block Idn=300mA AC (9 x CEE-17 63amp 5p)
	5 x powerSYNTAX® 480amp L1-brown L2-black L3-grey N-blue PE-green 400V IP67 (IN ; powerlock compatible)
	5 x powerSYNTAX® 480amp L1-brown L2-black L3-grey N-blue PE-green 400V IP67 with IP67 caps (LOOP ; powerlock compatible)
	3 x CEE-17 16amp 3p 230V IP44 (OUT)
	1 CEE-17 32amp 5p 400V IP44 (OUT)
Technical data	9 x CEE-17 63amp 5p 400V IP67 (OUT)
	CE Marking, IEC 61439-1 & 2 / PSC, Un : 400V 3pH+N+PE, fn : 50Hz, InA : 400amp, Icc : 6.000A, RDF : 50/100, IP : 44, Electrical insulation class : I (first)



400amp | 20U

Part Number: **PBF400P20U-31734**

Front	1 voltmeter selector switch with analogic voltmeter + 1 set incoming leds
	1 MCCB 400amp 4p 36.000A (MAIN) + 1 shunt release + 1 E-STOP
	1 digital multimeter 96x96mm with LCD graphic display
	1 MCB 16amp 4p-D 10.000A + 3 x RCBO 16amp 1pN-B 6.000A Idn=0,03A AC (3 x CEE-17 16amp 3p)
	1 MCB 32amp 4p-D 10.000A with earth leakage add-on block Idn=30mA AC (1 CEE-17 32amp 5p)
	7 x MCB 63amp 4p-D 10.000A with earth leakage add-on block Idn=300mA AC selective (7 x CEE-17 63amp 5p)
Rear	1 modular surge arrester with Advanced Circuit Interruption (ACI) type 2 / class II
	5 x powerSYNTAX® 480amp L1-brown L2-black L3-grey N-blue PE-green 400V IP67 (IN ; powerlock compatible)
	3 x CEE-17 16amp 3p 230V IP67 (OUT)
	1 CEE-17 32amp 5p 400V IP67 (OUT)
Technical data	7 x CEE-17 63amp 5p 400V IP67 (OUT)
	CE Marking, IEC 61439-1 & 2 / PSC, Un : 400V 3pH+N+PE, fn : 50Hz, InA : 400amp, Icc : 10.000A, RDF : 81/100, IP : 55, Electrical insulation class : I (first)





Cube series

Presenting the undisputed
Lightweight Champion

32amp | 63amp | 125amp

The PowerBox Cube Series is available in multiple sizes, each model being different just for the overall dimensions. The Cube boxes are molded in black insulating thermoplastic material, very resistant to shocks and the mechanical stress that these items will normally go through in their everyday usage (moving, constant handling etc.). They are easy to stack and to carry, with strong in-built handles. The total weight of our Cube boxes is 40% less than the standard rubber molded ones.



**Easily
stackable**



**Simple
to move**



**Shock
resistant**



**Extremely
safe**



**Custom
layouts**



**Light
to carry**

You will love using it

Designed to be user friendly, practical and safe

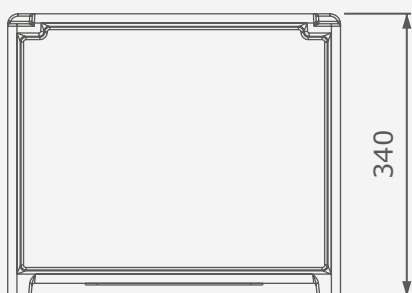
All the connectors, plugs and sockets are on the same side, while all the switches are placed on the opposite, thus being easily accessible to the operator. The panels that hold connectors or switches are placed in a backward position, recessed from the edges to better protect the components.

External box features

- Glow-wire-resistance 960°C according to EN 60695-2-11
- Excellent resistance to impacts
- Great electrical insulating qualities
- Self-extinguishing and hardy flammable
- Mechanical impacts IK10 according to EN 50102
- High mechanical strength
- UV and ozone resistance

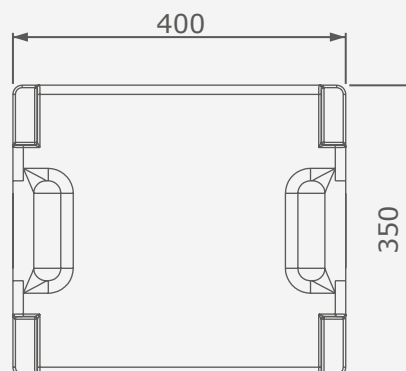
Overall dimensions

Cube3 and Cube4



Cube3

Height 340mm



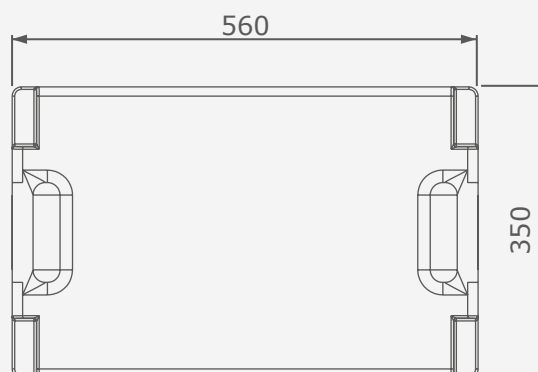
Cube3

Width 400 mm | Depth 350 mm



Cube4

Height 340mm



Cube4

Width 560 mm | Depth 350 mm

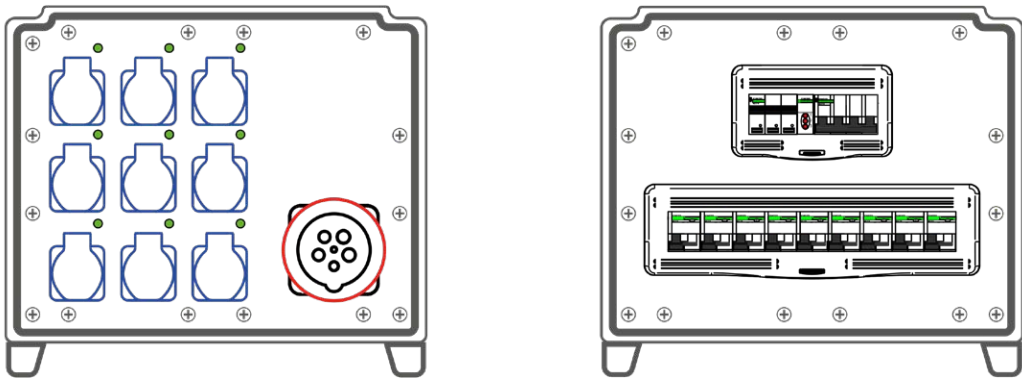
32amp



32amp | Cube3 series

Part Number: **PBF32P9M13**

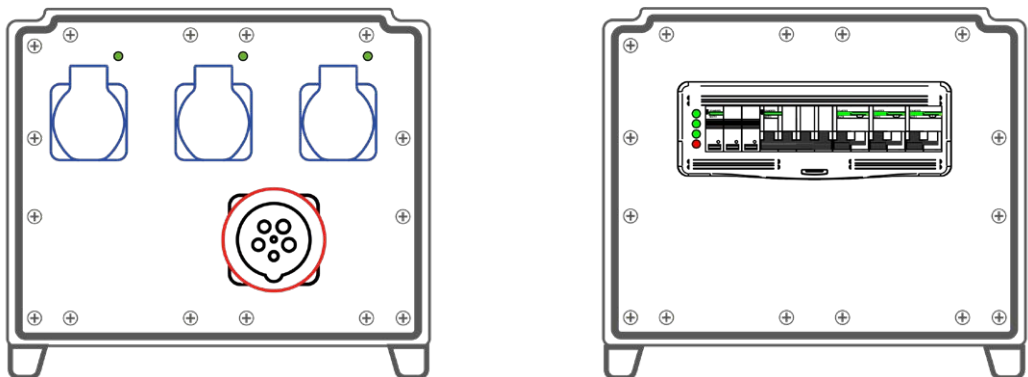
Front	1 set incoming leds
	1 MCB 32amp 4p-C 6.000/10.000A (MAIN)
	9 x RCBO 16amp 1pN-C 6.000/10.000A Idn=30mA AC (9 x CEE-17 16amp 3p)
Rear	1 CEE-17 32amp 5p 400V IP67 (IN)
	9 x CEE-17 16amp 3p 230V IP44 (OUT)
Technical data	CE Marking, IEC 61439-1 & 2 / PSC, Un : 400V 3pH+N+PE, fn : 50Hz, InA : 32amp, Icc : 6.000A, RDF : 66/100, IP : 44, Electrical insulation class : I (first)



32amp | Cube3 series

Part Number: **PBF32P3M23-S**

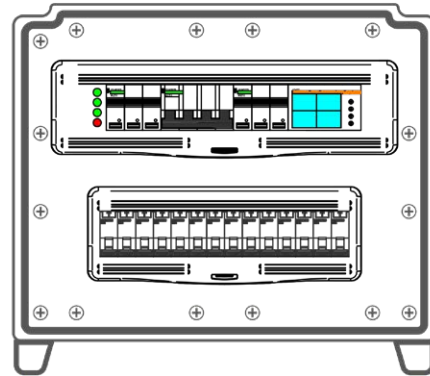
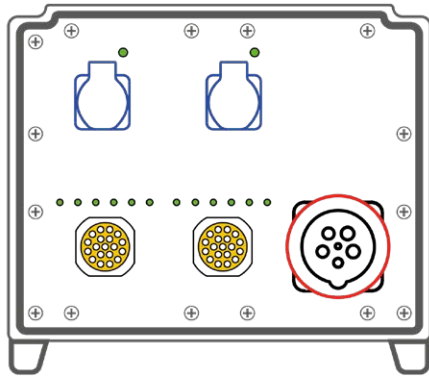
Front	1 set incoming leds
	1 MCB 32amp 4p-C 6.000/10.000A (MAIN)
	3 x RCBO 32amp 1pN-C 6.000/10.000A Idn=30mA AC (3 x CEE 32amp 3p)
Rear	1 CEE-17 32amp 5p 400V IP67 (IN)
	3 x CEE-17 32amp 3p 230V IP67 (OUT)
Technical data	CE Marking, IEC 61439-1 & 2 / PSC, Un : 400V 3pH+N+PE, fn : 50Hz, InA : 32amp, Icc : 6.000A, RDF : 100/100, IP : 54, Electrical insulation class : I (first)



32amp | Cube3 series

Part Number: **PBF32P2M1S2S193**

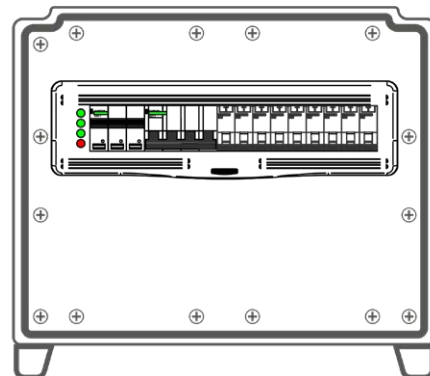
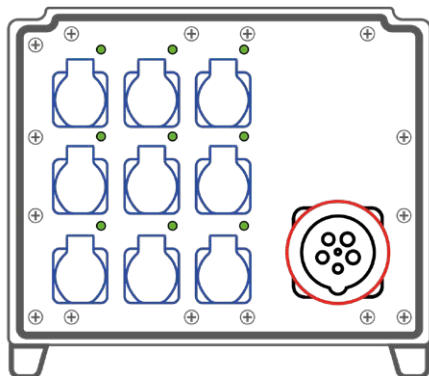
Front	1 set incoming leds 1 MCB 32amp 4p-C 6.000/10.000A (MAIN) 1 digital multimeter 96x96mm with LCD graphic display 2 x RCBO 16amp 1pN-C 6.000/10.000A Idn=30mA AC (2 x SCHUKO 16amp 3p) 12 x RCBO 16amp 1pN-C 6.000/10.000A Idn=30mA (2 x SYNTAX® SSX 19p)
Rear	1 CEE-17 32amp 5p 400V IP67 (IN) 2 x SCHUKO 16amp 3p 230V IP54 (OUT) 2 x SYNTAX® SSX 19-pin IP67 (OUT; Socapex 419 compatible)
Technical data	CE Marking, IEC 61439-1 & 2 / PSC, Un : 400V 3pH+N+PE, fn : 50Hz, InA : 32amp, Icc : 6.000A, RDF : 66/100, IP : 54, Electrical insulation class : I (first)



32amp | Cube3 series

Part Number: **PBF32P9M1S3**

Front	1 set incoming leds 1 MCB 32amp 4p-C 6.000/10.000A (MAIN) 9 x RCBO 16amp 1pN-C 6.000/10.000A Idn=30mA AC (9 x SCHUKO 16amp 3p)
Rear	1 CEE-17 32amp 5p 400V IP67 (IN) 9 x SCHUKO 16amp 3p 230V IP54 (OUT)
Technical data	CE Marking, IEC 61439-1 & 2 / PSC, Un : 400V 3pH+N+PE, fn : 50Hz, InA : 32amp, Icc : 6.000A, RDF : 66/100, IP : 54, Electrical insulation class : I (first)



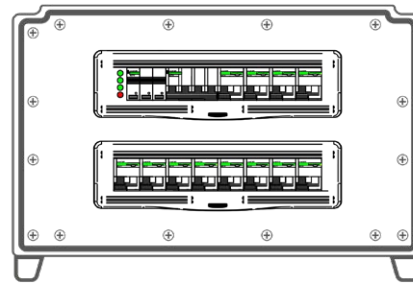
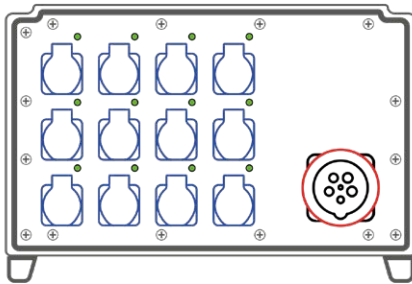
63amp



63amp | Cube4 series

Part Number: **PBF63P12M14**

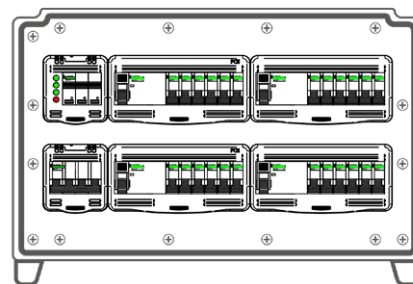
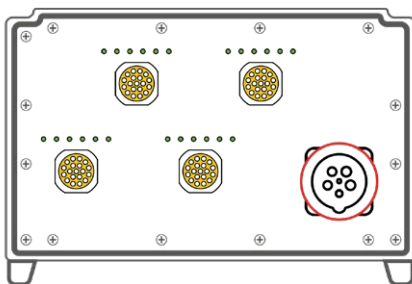
Front	1 set incoming leds 1 MCB 63amp 4p-C 6.000/10.000A (MAIN) 12 x RCBO 16amp 1pN-C 4.500/6.000A Idn=30mA AC (12 x CEE-17 16amp 3p)
Rear	1 CEE-17 63amp 5p 400V IP67 (IN) 12 x CEE-17 16amp 3p 230V IP44 (OUT)
Technical data	CE Marking, IEC 61439-1 & 2 / PSC, Un : 400V 3pH+N+PE, fn : 50Hz, InA : 63amp, Icc : 6.000A, RDF : 98/100, IP : 44, Electrical insulation class : I (first)



63amp | Cube4 series

Part Number: **PBF63P4S194**

Front	1 set incoming leds 1 MCB 63amp 4p-C 6.000/10.000A (MAIN) 4 x RCCB 40amp 4p Idn=30mA AC + 24 x MCB 16amp 1pN-C 4.500/6.000A (4 x SYNTAX® SSX 19p)
Rear	1 CEE-17 63amp 5p 400V IP67 (IN) 4 x SYNTAX® SSX 19-pin IP67 (OUT; Socapex 419 compatible)
Technical data	CE Marking, IEC 61439-1 & 2 / PSC, Un : 400V 3pH+N+PE, fn : 50Hz, InA : 63amp, Icc : 6.000A, RDF : 49/100, IP : 54, Electrical insulation class : I (first)

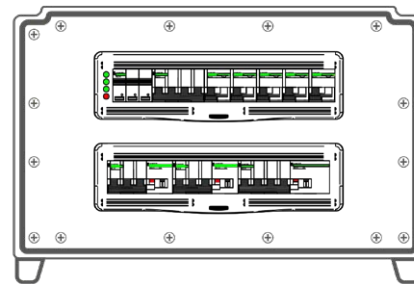
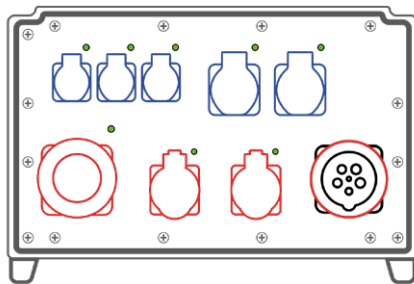




63amp | Cube4 series

Part Number: **PBF63P3M1S2M21P11P21P34**

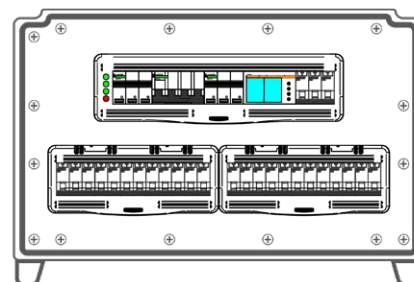
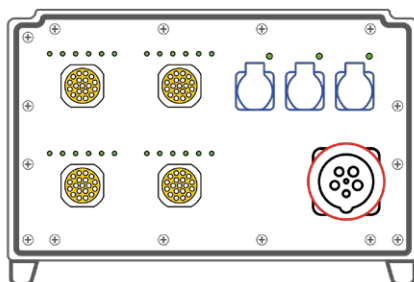
Front	1 set incoming leds
	1 MCB 63amp 4p-C 6.000/10.000A (MAIN)
	3 x RCBO 16amp 1pN-C 6.000A Idn=30mA AC (3 x SCHUKO 16amp 3p)
	2 x RCBO 32amp 1pN-C 6.000A Idn=30mA AC (2 x CEE-17 32amp 3p)
	1 MCB 16amp 4p-C 6.000A with earth-leakage add-on block Idn=30mA AC (1 CEE-17 16amp 5p)
	1 MCB 32amp 4p-C 6.000A with earth leakage add-on block Idn=30mA AC (1 CEE-17 32amp 5p)
Rear	1 MCB 63amp 4p-C 6.000A with earth leakage add-on block Idn=300mA AC (1 CEE-17 63amp 5p)
	1 CEE-17 63amp 5p 400V IP67 (IN)
	3 x SCHUKO 16amp 3p 230V IP54 (OUT)
	2 x CEE-17 32amp 3p 230V IP44 (OUT)
	1 CEE-17 16amp 5p 400V IP44 (OUT)
	1 CEE-17 32amp 5p 400V IP44 (OUT)
Technical data	1 CEE-17 63amp 5p 400V IP67 (OUT)
	CE Marking, IEC 61439-1 & 2 / PSC, Un : 400V 3pH+N+PE, fn : 50Hz, InA : 63amp, Icc : 6.000A, RDF : 39/100, IP : 54, Electrical insulation class : I (first)



63amp | Cube4 series

Part Number: **PBF63P3M1S4S194**

Front	1 set incoming leds
	1 MCB 63amp 4p-C 6.000/10.000A (MAIN)
	1 digital multimeter 96x96mm with LCD graphic display
	3 x RCBO 16amp 1pN-C 6.000/10.000A Idn=30mA AC (3 x SCHUKO 16amp 3p)
	24 x RCBO 16amp 1pN-C 6.000/10.000A Idn=30mA AC (4 x SYNTAX® SSX 19p)
Rear	1 CEE-17 63amp 5p 400V IP67 (IN)
	3 x SCHUKO 16amp 3p 230V IP54 (OUT)
	4 x SYNTAX® SSX 19-pin IP67 (OUT; Socapex 419 compatible)
Technical data	CE Marking, IEC 61439-1 & 2 / PSC, Un : 400V 3pH+N+PE, fn : 50Hz, InA : 63amp, Icc : 6.000A, RDF : 43/100, IP : 54, Electrical insulation class : I (first)



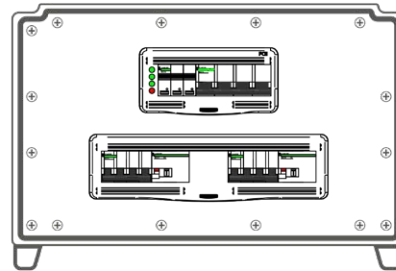
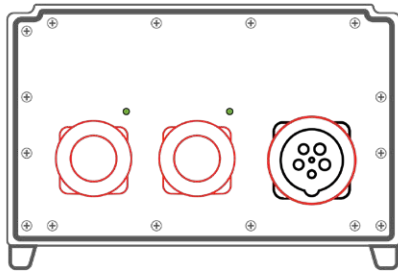
125amp



125amp | Cube4 series

Part Number: **PBF125P2P34**

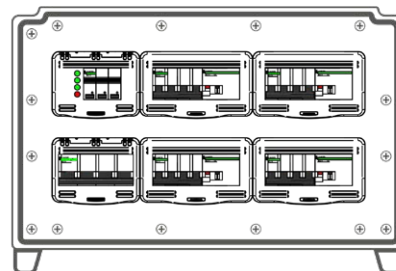
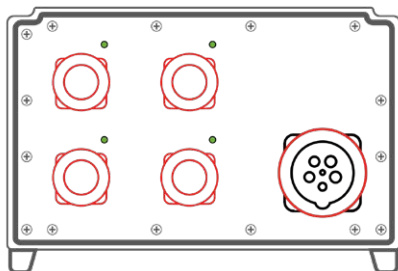
Front	1 set incoming leds 1 MCB 125amp 4p-C 6.10.000A (MAIN) 2 x MCB 63amp 4p-C 6.000A with earth leakage add-on block Idn=300mA AC (2 x CEE-17 63amp 5p)
Rear	1 CEE-17 125amp 5p 400V IP67 (IN) 2 x CEE-17 63amp 5p 400V IP67 (OUT)
Technical data	CE Marking, IEC 61439-1 & 2 / PSC, Un : 400V 3pH+N+PE, fn : 50Hz, InA : 125amp, Icc : 6.000A, RDF : 98/100, IP : 54, Electrical insulation class : I (first)



125amp | Cube4 series

Part Number: **PBF125P2M12P22P34**

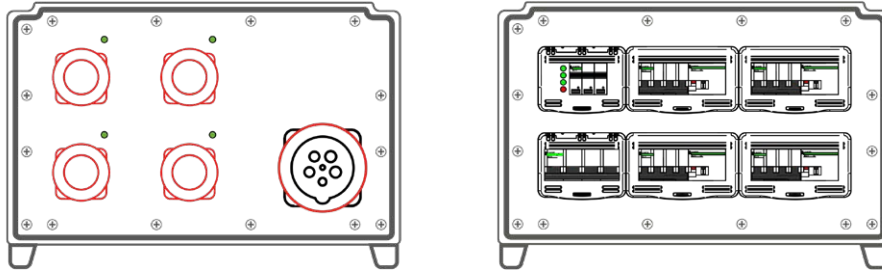
Front	1 set incoming leds 1 MCB 125amp 4p-C 6.10.000A (MAIN) 2 x RCBO 16amp 1pN-C 6.000A Idn=30mA AC (3 x CEE-17 16amp 3p) 2 x MCB 32amp 4p-C 6.000A with earth leakage add-on block Idn=30mA AC (2 x CEE-17 32amp 5p) 2 x MCB 63amp 4p-C 6.000A with earth leakage add-on block Idn=300mA AC (2 x CEE-17 63amp 5p)
Rear	1 CEE-17 125amp 5p 400V IP67 (IN) 2 x CEE-17 16amp 3p 230V IP44 (OUT) 2 x CEE-17 32amp 5p 400V IP44 (OUT) 2 x CEE-17 32amp 5p 400V IP67 (OUT)
Technical data	CE Marking, IEC 61439-1 & 2 / PSC, Un : 400V 3pH+N+PE, fn : 50Hz, InA : 125amp, Icc : 6.000A, RDF : 60/100, IP : 44, Electrical insulation class : I (first)



125amp | Cube4 series

Part Number: **PBF125P4P24-S**

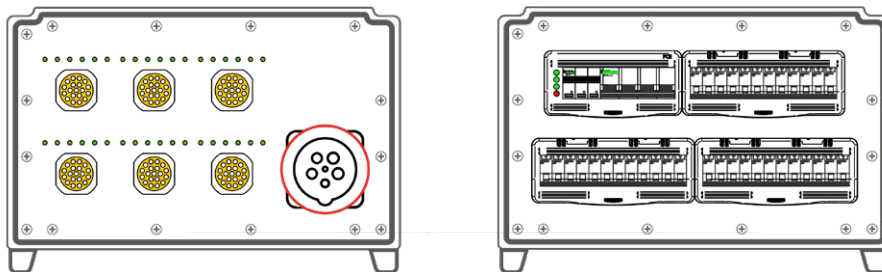
Front	1 set incoming leds 1 MCB 125amp 4p-C 6.10.000A (MAIN) 4 x MCB 32amp 4p-C 6.000A with earth leakage add-on block Idn=30mA AC (4 x CEE-17 32amp 5p)
Rear	1 CEE-17 125amp 5p 400V IP67 (IN) 4 x CEE-17 32amp 5p 400V IP67 (OUT)
Technical data	CE Marking, IEC 61439-1 & 2 / PSC, Un : 400V 3pH+N+PE, fn : 50Hz, InA : 125amp, Icc : 6.000A, RDF : 97/100, IP : 54, Electrical insulation class : I (first)



125amp | Cube4 series

Part Number: **PBF125P6S194**

Front	1 set incoming leds 1 MCB 125amp 4p-C 10.000A (MAIN) 36 x RCBO 16amp 1pN-C 6.000/10.000A (6 x SYNTAX® SSX 19p)
Rear	1 CEE-17 125amp 5p 400V IP67 (IN) 6 x SYNTAX® SSX 19-pin IP67 (OUT; Socapex 419 compatible)
Technical data	CE Marking, IEC 61439-1 & 2 / PSC, Un : 400V 3pH+N+PE, fn : 50Hz, InA : 125amp, Icc : 6.000A, RDF : 65/100, IP : 54, Electrical insulation class : I (first)





Heavy-duty series

Strong, customizable and easily movable

400amp | 630amp or custom

The PowerBox Heavy Duty distros are resistant and strong, so they are especially suited for broadcasting, sport events, fairs and any kind of outdoor applications. They are easy to move as the structure is designed to be stackable and allows usage of forklift or lifting cables. All components are fitted with screws resistant to vibrations, shocks and all forms of mechanical stress they might be exposed to, in order to ensure maximum safety over time. All the designs can be customized to the smallest detail: input and outputs, switches, protection devices, displays, connectors' colors etc. From 16 to 400 Amp or even higher current ratings, and several operating voltage options.



Easily stackable



Forklift ready



Shock resistant



Extremely safe



Custom layouts



Crane ready

Easy is the word

PowerBox distros are designed with a special eye on the operators

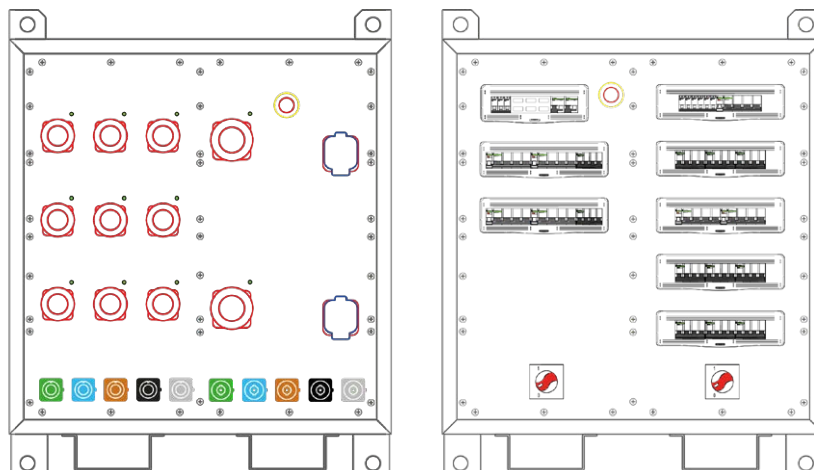
Easy to put into operation, as inputs and outputs all are quick-type plugs, sockets and connectors, with no special tools needed. Easy everyday usage as all plugs, sockets, connectors and therefore cables are on the same side, while protections, displays and switches are all placed on the front side to be easily accessible to the operator. Care for details and thoughtful layout focused on ergonomics, with the bigger connectors always placed in the lower part of the panel, making it easier for the operators to plug and unplug even the heaviest cables.



400amp | 2x24U

Part Number: **PBF400P224U-400**

Front	1 set incoming leds
	1 MCCB 400amp 4p 36.000A (MAIN OUT CEE-17 32amp, 63amp and DS6) + 1 shunt release + 1 E-STOP pull to release
	1 digital multimeter with LCD graphic display
	3 x MCB 100amp 4p-C 10.000A with earth-leakage relay (adjustable fault current and delay time) + 9 x MCB 32amp 4p-C 6.000/10.000A (9 x CEE-17 32amp 5p)
	2 x MCB 100amp 4p-C 10.000A with earth-leakage relay (adjustable fault current and delay time) + 2 x MCB 63amp 4p-C 6.000/10.000A (2 x CEE-17 63amp 5p) + 2 x MCB 80amp 4p-C 10.000A (2 x Marechal DS6 90amp 5p)
Rear	1 MCCB 160amp 4p 18.000A (OUT 160amp) + 1 shunt release
	5 x powerSYNTAX® 480amp L1-brown L2-black L3-grey N-blue PE-green 400V IP67 (IN ; power-lock 400A compatible)
	9 x CEE-17 32amp 5p 400V IP67 (OUT)
	2 x CEE-17 32amp 5p 400V IP67 (OUT)
	2 x Marechal DS6 90amp 5p IP65 (OUT)
Technical data	5 x powerSYNTAX® 480amp L1-brown L2-black L3-grey N-blue PE-green 400V IP67 with IP53 caps (OUT 160amp; powerlock 400A compatible)
	CE Marking, IEC 61439-1 & 2 / PSC, Un : 400V 3pH+N+PE, fn : 50Hz, InA : 400amp, Icc : 10.000A, RDF : 71/100, IP : 54, Electrical insulation class : I (first)



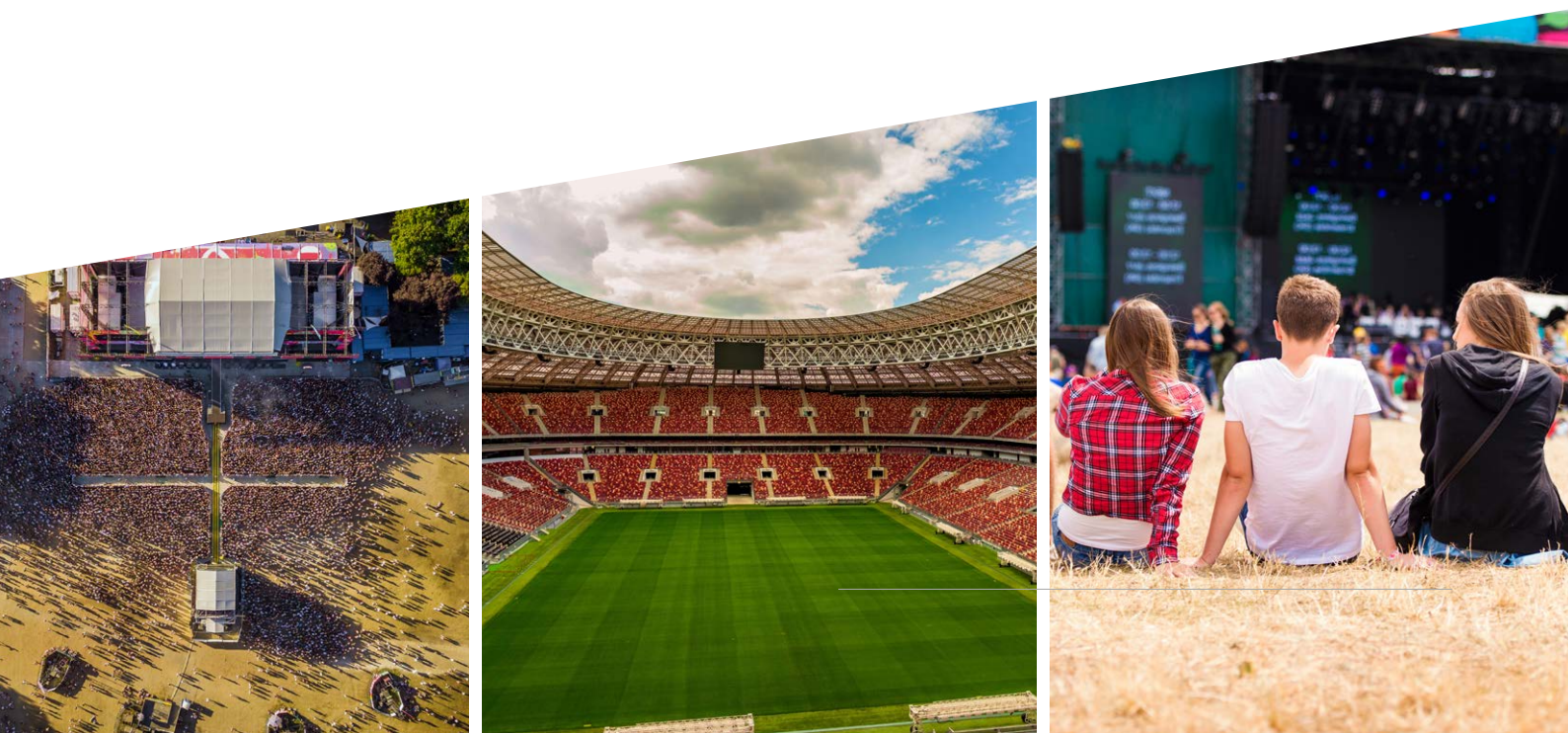
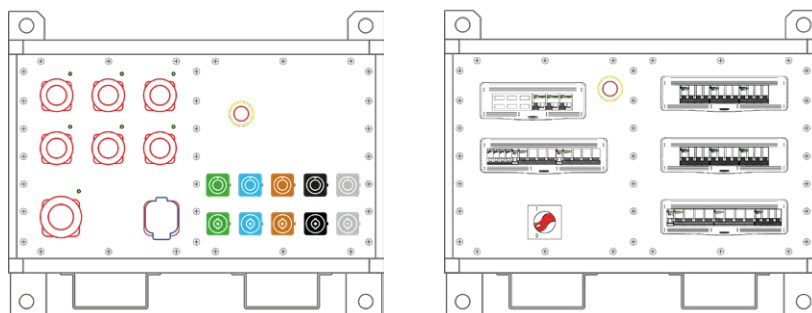
400amp



400amp | 2x12U

Part Number: **PBF400P212U-160**

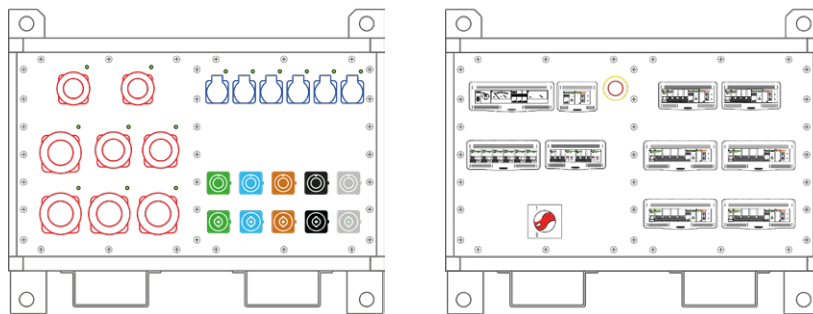
Front	1 set incoming leds 1 MCCB 160amp 4p 18.000A (MAIN OUT) + 1 shunt release + 1 E-STOP pull to release 1 digital multimeter with LCD graphic display 2 x MCB 100amp 4p-C 10.000A with earth-leakage relay (adjustable fault current and delay time) + 6 x MCB 32amp 4p-C 6.000/10.000A (6 x CEE-17 32amp 5p) 1 MCB 100amp 4p-C 10.000A with earth-leakage relay (adjustable fault current and delay time) + 1 MCB 63amp 4p-C 6.000/10.000A (CEE-17 63amp 5p) + 1 MCB 80amp 4p-C 10.000A (Marechal DS6 90amp 5p)
Rear	5 x powerSYNTAX® 480amp L1-brown L2-black L3-grey N-blue PE-green 400V IP67 (IN ; power-lock 400A compatible) 5 x powerSYNTAX® 480amp L1-brown L2-black L3-grey N-blue PE-green 400V IP67 with IP53 caps (LOOP ; powerlock 400A compatible) 6 x CEE-17 32amp 5p 400V IP67 (OUT) 1 CEE-17 32amp 5p 400V IP67 (OUT) 1 Marechal DS6 90amp 5p IP65 (OUT)
Technical data	CE Marking, IEC 61439-1 & 2 / PSC, Un : 400V 3pH+N+PE, fn : 50Hz, InA : 400amp (IN), InA : 160A (Main OUT), Icc : 10.000A, RDF : 71/100, IP : 54, Electrical insulation class : I (first).



400amp | 2x12U

Part Number: **PBF400P212U-400**

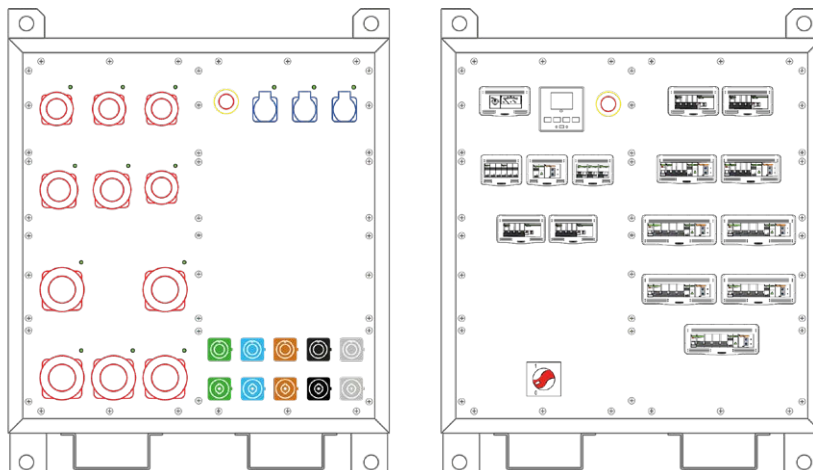
Front	1 voltmeter selector switch with analogic voltmeter + 1 set incoming leds
	1 MCCB 400amp 4p 36.000A (MAIN) with earth-leakage relay adjustable fault current and delay time + 1 shunt release + 1 E-STOP
	1 digital multimeter 96x96mm with LCD graphic display
	6 x RCBO 16amp 1pN-C 6.000A Idn=30mA AC (3 x SCHUKO 16amp 3p)
	2 x MCB 32amp 4p-C 6.000/10.000A with earth leakage add-on block Idn=30mA AC (2 x CEE-17 32amp 5p)
	2 x MCB 63amp 4p-C 6.000/10.000A with earth-leakage relay adjustable fault current and delay time (2 x CEE-17 63amp 5p)
Rear	4 x MCB 125amp 4p-C 10.000A with earth-leakage relay adjustable fault current and delay time (4 x CEE-17 125amp 5p)
	5 x powerSYNTAX® 480amp L1-brown L2-black L3-grey N-blue PE-green 400V IP67 (IN ; power-lock 400A compatible) with IP67 caps
	5 x powerSYNTAX® 480amp L1-brown L2-black L3-grey N-blue PE-green 400V IP67 (LOOP ; po-werlock 400A compatible) with IP67 caps
	6 x SCHUKO 16amp 3p 230V IP54 (OUT)
	2 x CEE-17 32amp 5p 400V IP67 (OUT)
Technical data	2 x CEE-17 63amp 5p 400V IP67 (OUT)
	4 x CEE-17 125amp 5p 400V IP67 (OUT)
	CE Marking, IEC 61439-1 & 2 / PSC, Un : 400V 3pH+N+PE, fn : 50Hz, InA : 630amp, Icc : 10.000A, RDF : 50/100, IP : 44, Electrical insulation class : I (first)



630amp | 2x24U

Part Number: **PBF750P224U-630**

Front	1 voltmeter selector switch with analogic voltmeter + 1 set incoming leds
	1 MCCB 630amp 4p 36.000A (MAIN) with earth-leakage relay adjustable fault current and delay time + 1 shunt release + 1 E-STOP
	1 digital multimeter 96x96mm with LCD graphic display
	3 x RCBO 16amp 1pN-C 6.000A Idn=30mA AC (3 x SCHUKO 16amp 3p)
	4 x MCB 32amp 4p-C 6.000/10.000A with earth leakage add-on block Idn=30mA AC (4 x CEE-17 32amp 5p)
	2 x MCB 63amp 4p-C 6.000/10.000A with earth-leakage relay adjustable fault current and delay time (2 x CEE-17 63amp 5p)
Rear	5 x MCB 125amp 4p-C 10.000A with earth-leakage relay adjustable fault current and delay time (5 x CEE-17 125amp 5p)
	5 x powerSYNTAX® 750amp L1-brown L2-black L3-grey N-blue PE-green 400V IP67 (IN ; power-lock 660A compatible) with IP67 caps
	5 x powerSYNTAX® 750amp L1-brown L2-black L3-grey N-blue PE-green 400V IP67 (LOOP ; powerlock 660A compatible) with IP67 caps
	3 x SCHUKO 16amp 3p 230V IP54 (OUT)
	4 x CEE-17 32amp 5p 400V IP67 (OUT)
Technical data	2 x CEE-17 63amp 5p 400V IP67 (OUT)
	5 x CEE-17 125amp 5p 400V IP67 (OUT)
	Technical data : CE Marking, IEC 61439-1 & 2 / PSC, Un : 400V 3pH+N+PE, fn : 50Hz, InA : 630amp, Icc : 10.000A, RDF : 50/100, IP : 44, Electrical insulation class : I (first)





Soca Splitters and Cables

The best components and designs
for your PowerBox Soca items

Soca is a wiring standard well known in the entertainment industry primarily for the 19 pins known as Soca connectors, used in film, television and stage lighting. Thanks to our Syntax SSX 19-pin connectors and cables we are able to provide wiring of the highest quality with enduring performances over time. Extension cables, break-out boxes and cables (male SSX connector with 6 sockets), break-ins (female SSX connector with 6 plugs) and S2W 2 way splitter boxes, all with 19-pin SSX connectors for uncompromised quality and great durability.

Break-Out Soca

Configuration

Spider splitter made Syntax® SSX 19-pin series male connector (black color heavy duty locking ring, silver contacts) 6 Syntax® cables 3G2,5mm² / 6 CEE-17 16amp 3p 6h 230V IP44 black color connectors.

p/n **SP19M6FBL010-SC** | 6 x 1m cables

p/n **SP19M6FBL015-SC** | 6 x 1,5m cables

p/n **SP19M6FBL020-SC** | 6 x 2m cables



Customization

Bespoke versions are available, with:

- different fixed lengths, or offset lengths on each channel;
- H07RN-F cables;
- SSX 19p connectors with gold plated contacts, or with colored rings (metal or rubber coated);
- German or French cable plugs/connectors, or powerCON, or powerON True1.

Break-In Soca

Configuration

Spider splitter made Syntax® SSX 19-pin series female connector (silver contacts) 6 Syntax® cables 3G2,5mm² / 6 CEE-17 16amp 3p 6h 230V IP44 black color plugs.

p/n **SP6M19FBL010-SC** | 6 x 1m cables

p/n **SP6M19FBL015-SC** | 6 x 1,5m cables

p/n **SP6M19FBL020-SC** | 6 x 2m cables



Customization

Bespoke versions are available, with:

- different fixed lengths, or offset lengths on each channel;
- H07RN-F cables;
- SSX 19p connectors with gold plated contacts, or with colored rings (metal or rubber coated);
- German or French cable plugs/connectors, or powerCON, or powerON True1.

Extension Cable Soca

Configuration

Extension cable made with Syntax® cable 18x2,5mm² and Syntax® SSX 19-pin series male / female connectors (black color heavy duty locking ring, silver contacts).

p/n **EC19PS25L05-SC** | 5m cable length

p/n **EC19PS25L10-SC** | 10m cable length

p/n **EC19PS25L15-SC** | 15m cable length

p/n **EC19PS25L20-SC** | 20m cable length

p/n **EC19PS25L25-SC** | 25m cable length

p/n **EC19PS25L30-SC** | 30m cable length



Customization

Bespoke versions are available with:

- different cable lengths;
- SSX 19p connectors with gold plated contacts, or with colored rings (metal or rubber coated);
- Syntax® 19G2,5mm² pur cable (polyurethane jacket).



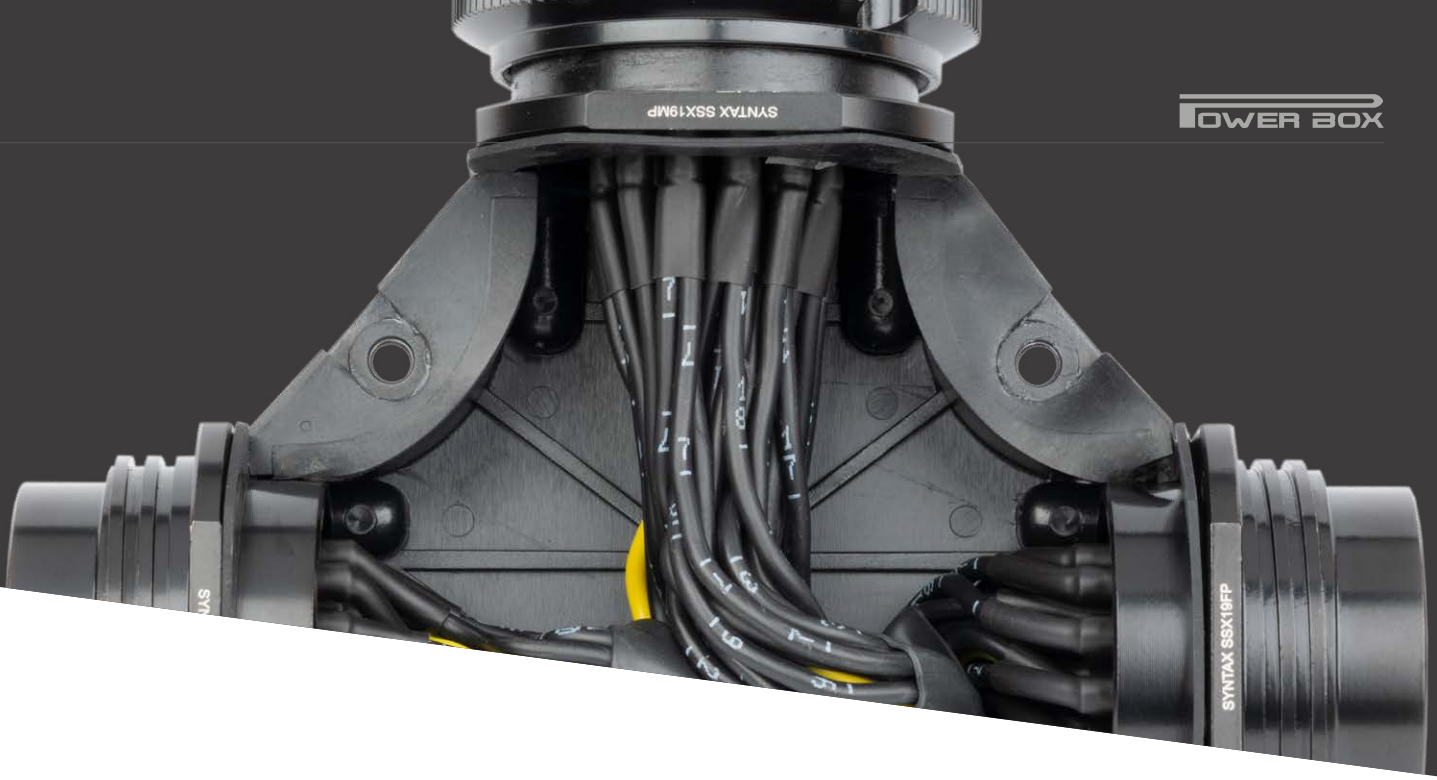
Break-Out Box Soca

Made on a black LLDPE printed box (insulating, watertight, GWT compliant, dimensions H70 x W380 x D90mm). Syntax SSX-19 pin male (IN) and female (LOOP) connectors with possibility to mount IP67 caps. OUT sockets have voltage presence lights. Two M10 connections for mounting half couplers or clamps (not supplied). Safety cable mounting ring (safety cable not supplied).

Available models

Part No.	IN	LOOP	OUT
SP19M6FBQ-2M1R	Syntax SSX 19pin M	-	6 CEE-17 6amp 3p 6h 230V IP44
SP19M6FBRQ-2M1R	Syntax SSX 19pin M	Syntax SSX 19pin F	6 CEE-17 16amp 3p 6h 230V IP44
SP19M6FSQ-2M1R	Syntax SSX 19pin M	-	6 German (Schuko) 16amp 3p 230V IP44
SP19M6FSRQ-2M1R	Syntax SSX 19pin M	Syntax SSX 19pin F	6 German (Schuko) 16amp 3p 230V IP44
SP19M6FFQ-2M1R	Syntax SSX 19pin M	-	6 France (NFC) 16amp 3p 230V IP44
SP19M6FFRQ-2M1R	Syntax SSX 19pin M	Syntax SSX 19pin F	6 France (NFC) 16amp 3p 230V IP44
SP19M6PCQ-2M1R	Syntax SSX 19pin M	-	6 powerCON 20amp 3p 230V IP2X grey
SP19M6PCRQ-2M1R	Syntax SSX 19pin M	Syntax SSX 19pin F	6 powerCON 20amp 3p 230V IP2X grey
SP19M6PTQ-2M1R	Syntax SSX 19pin M	-	6 powerCON True1 16amp 3p 230V IP65
SP19M6PTRQ-2M1R	Syntax SSX 19pin M	Syntax SSX 19pin F	6 powerCON True1 16amp 3p 230V IP65





S2W box Syntax® 2-Way with Syntax® SSX 19 pin connectors

S2W with 1 male | 2 female Syntax® SSX 19pin connectors. The S2W model with 19pin connectors is available with silver plated or gold plated contacts. Standard and reverse versions are available (standard version in the photos).
The reverse version differs from the standard only for the position where the input connector is (on the reverse version, the input is inline with one of the outputs).



S2W Standard version

1 male SSX / 2 female SSX

p/n **S2WSXCS000S** 1 IN 2 x OUT | Silver contacts
p/n **S2WSXCG000S** 1 IN 2 x OUT | Gold contacts



S2W Reverse version

1 male SSX / 2 female SSX

p/n **S2WSXCS000R** 1 IN 2 x OUT | Silver contacts
p/n **S2WSXCG000R** 1 IN 2 x OUT | Gold contacts



Turtle Line

So compact and sturdy
you can take it everywhere

32amp | 63amp versions

PowerBox Turtle series, available in 2 sizes, Turtle and Maxi Turtle, which differ only in overall dimensions. They are molded in a special compound of hard butyl insulating rubber in black color, elastic, resistant to shocks and mechanical stresses deriving from normal use (transport, continuous handling, etc.). Stackable, transportable using the handle on the side.



**Easily
stackable**



**Light
to carry**



**Shock
resistant**



**Extremely
safe**



**Custom
layouts**

External box features

- Glow-wire-resistance 960°C according to EN 60695-2-11
- Excellent resistance to impacts
- Great electrical insulating qualities
- Self-extinguishing and hardy flammable
- Mechanical impacts IK10 according to EN 50102
- High mechanical strength
- UV and ozone resistance



Red lights signal input voltage presence

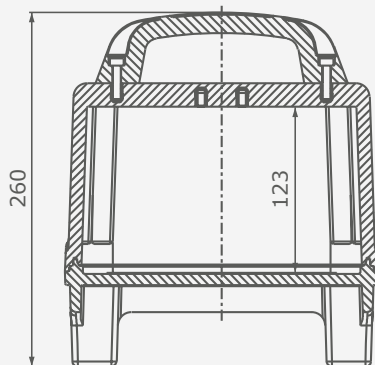


Green lights signal outputs voltage presence

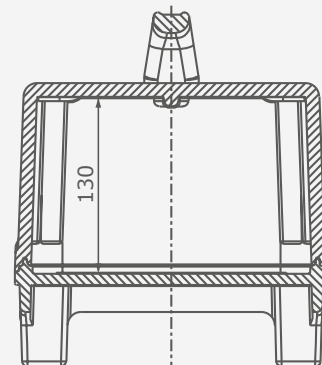


Turtles are shaped to be easily stackable

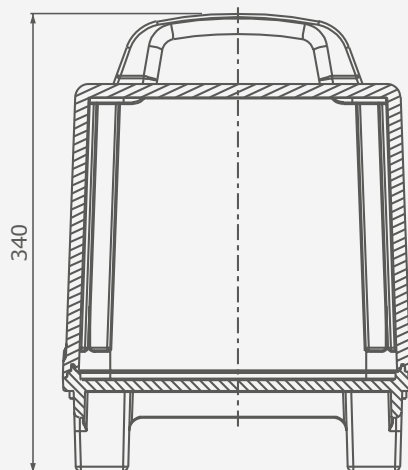
Overall dimensions Standard and Maxi version



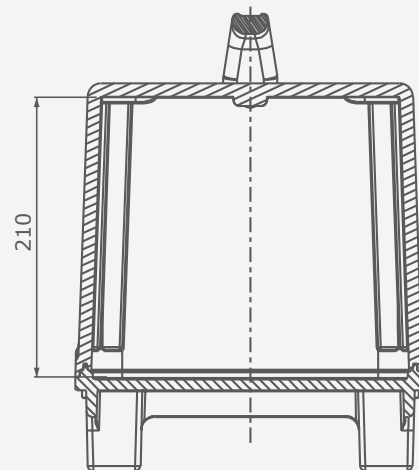
Standard version
Dimensions in mm



Standard version
Dimensions in mm



Maxi Turtle
Available on request
Dimensions in mm



Maxi Turtle
Available on request
Dimensions in mm

32amp



32amp | Turtle line

Part Number: **PBF32P6M1SRT**

Configuration	1 CEE-17 32amp 5p 6h 400V IP44 (IN)
	1 CEE-17 32amp 5p 6h 400V IP44 (LOOP)
	6 x SCHUKO 16amp 3p 230V IP54 (OUT)
	1 RCCB 40amp 4p IΔn 0,03A AC type
	6 x MCB 16amp 1pN-C (6 x SCHUKO 16amp)
Technical data	IEC 61439-1 & 2, Ue=400V 3pH+N+E, fn=50Hz, InA=32amp, Icc=4.500A, IP=44, RDF=50%





32amp | Turtle line

Part Number: **PBF32P6M1TC**

Configuration	1 CEE-17 32amp 5p 6h 400V IP44 plug with 2m. cable type H07RN-F 5G6mm ² (IN)
	6 x CEE-17 16amp 3p 6h 230V IP44 (OUT)
	1 RCCB 40amp 4p IΔn 0,03A AC type
	6 x MCB 16amp 1pN-C (6 x CEE-17 16amp single-phase)
Technical data	IEC 61439-1 & 2, Ue=400V 3pH+N+E, fn=50Hz, InA=32amp, Icc=4.500A, IP=44, RDF=100%

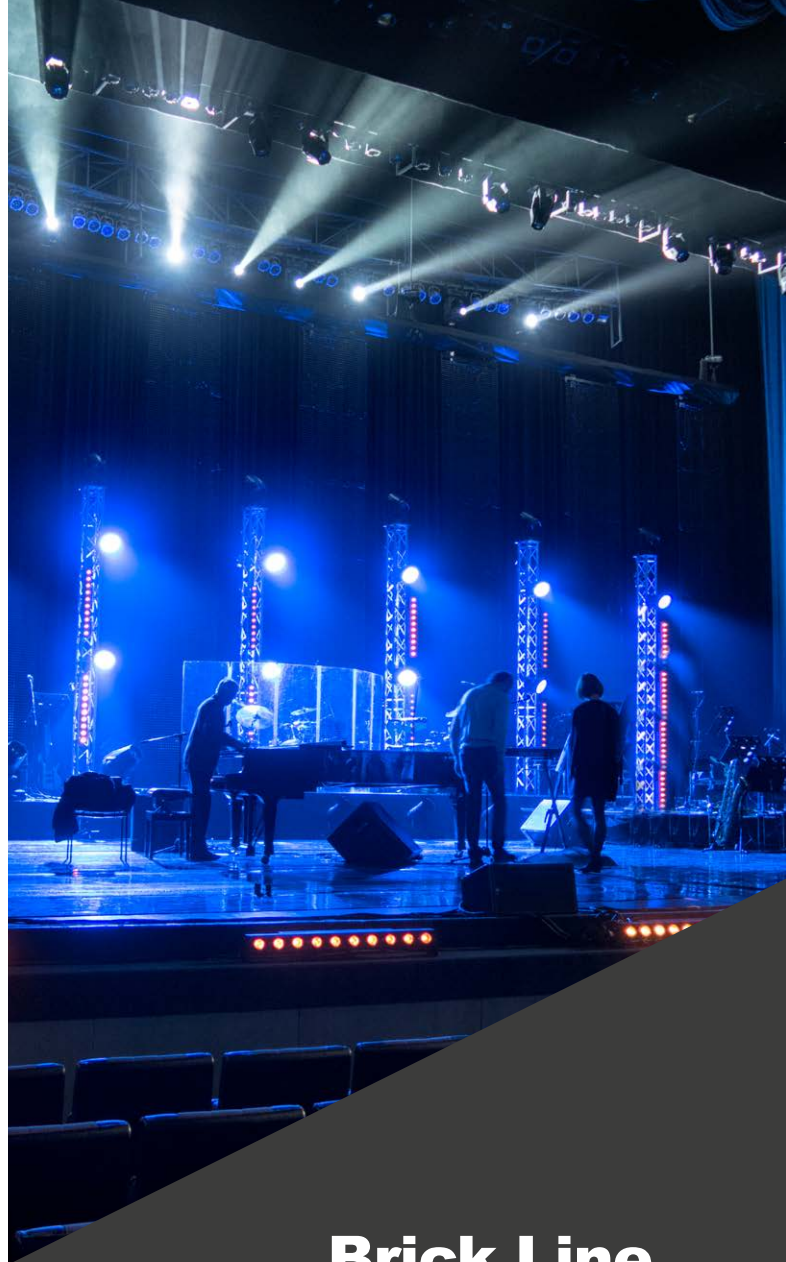


63amp | Turtle line

Part Number: **PBF63P2P2T**

Configuration	1 CEE-17 63amp 5p 6h 400V IP67 (IN)
	2 x CEE-17 32amp 5p 6h 400V IP44 (OUT)
	1 RCCB 63amp 4p IΔn 0,03A AC type
	2 x MCB 32amp 4p-C (2 x CEE-17 32amp three-phase)
Technical data	IEC 61439-1 & 2, Ue=400V 3pH+N+E, fn=50Hz, InA=63amp, Icc=6.000A, IP=44, RDF=98%





Brick Line

It will always be right there where you need it

32amp versions

The PowerBox Brick units were created to be used either on the floor or hung up on a truss. They are light, practical and easily transportable thanks to their built-in handle. The containers are molded in a black hard rubber special compound. Various models (Brick, Brick-S and Brick-Maxi) with different overall dimensions are available, so that each configuration will have its tailored size for its own combination of plugs, sockets and protections. On the versions with external power cables, cable glands with cable-saving spiral are provided to prevent breakage of the conductors due to bending and preserve the integrity of the cables over time. Input and outputs have their specific "voltage on" control lights. The switches are installed under IP54 hinged windows with automatic spring closing.



**Light
to carry**



**Shock
resistant**



**Extremely
safe**



**Custom
layouts**

External box features

- Excellent resistance to impacts
- Great electrical insulating qualities
- UV and ozone resistance
- Self-extinguishing and hardy flammable
- High mechanical strength
- Glow-wire-resistance 960°C according to EN 60695-2-11
- Mechanical impacts IK10 according to EN 50102

Versions and dimensions

Version	Height	Width	Depth
Brick	72 mm	430 mm	115 mm
Brick-S	90 mm	415 mm	120 mm
Brick-Maxi	83 mm	450 mm	120 mm



32amp | Brick-S

Part Number: **PBF32M4M1S**

32amp

Configuration	1 CEE-17 32amp 3p 6h 230V IP44 (IN)
	4 x CEE-17 16amp 3p 6h 230V IP44 (OUT)
Technical data	1 RCBO 32amp 1pN-C IΔn 0,03A AC type (MAIN)
	2 x MCB 16amp 1pN-C (4 x CEE-17 16amp single-phase)
IEC 61439-1 & 2, Ue=230V 1pH+N+E, fn=50Hz, InA=32amp, Icc=4.500A, IP=44, RDF=100%	



32amp | Brick-S

Part Number: **PBF32P3M2S**

32amp

Configuration	1 CEE-17 32amp 5p 6h 400V IP44 (IN)
	3 x CEE-17 32amp 3p 6h 230V IP44 (OUT)
Technical data	3 x RCBO 32amp 1pN-C IΔn 0,03A AC type (3 x CEE-17 32amp single-phase)
	IEC 61439-1 & 2, Ue=400V 3pH+N+E, fn=50Hz, InA=32amp, Icc=4.500A, IP=44, RDF=100%



32amp | Brick

Part Number: **PBF32M4M1CC**

32amp

Configuration	1 CEE-17 32amp 3p 6h 230V IP44 plug with 2m. cable type H07RN-F 3G6mm ² (IN)
	4 x CEE-17 16amp 3p 6h 230V IP44 (OUT)
Technical data	1 RCBO 32amp 1pN-C IΔn 0,03A AC type (MAIN)
	2 x MCB 16amp 1pN-C (4 x CEE-17 16amp single-phase)
IEC 61439-1 & 2, Ue=230V 1pH+N+E, fn=50Hz, InA=32amp, Icc=4.500A, IP=44, RDF=100%	



32amp | Brick-Maxi

Part Number: **PBF32P6M1SRC**

32amp

Configuration	1 CEE-17 32amp 5p 6h 400V IP44 plug with 2m. cable type H07RN-F 5G6mm ² (IN)
	6 x SCHUKO 16amp 3p 230V IP54 (OUT)
Technical data	1 RCCB 40amp 4p IΔn 0,03A AC type (MAIN)
	6 x MCB 16amp 1pN-C (6 x SCHUKO 16amp)
IEC 61439-1 & 2, Ue=400V 3pH+N+E, fn=50Hz, InA=32amp, Icc=4.500A, IP=44, RDF=100%	



32amp | Brick-Maxi

Part Number: **PBF32P6M1SRRC**

32amp

Configuration	1 CEE-17 32amp 5p 6h 400V IP44 plug with 2m. cable type H07RN-F 5G6mm ² (IN)
	1 CEE-17 32amp 5p 6h 400V IP44 (LOOP)
Technical data	6 x SCHUKO 16amp 3p 230V IP54 (OUT)
	1 RCCB 40amp 4p IΔn 0,03A AC type (MAIN)
6 x MCB 16amp 1pN-C (6 x SCHUKO 16amp)	
IEC 61439-1 & 2, Ue=400V 3pH+N+E, fn=50Hz, InA=32amp, Icc=4.500A, IP=44, RDF=50%	



MiniBrick Line

Light and reliable splitter boxes for every input/output combination

16amp versions

The PowerBox miniBricks are professional multi-socket boxes ideally suitable for any application throughout the entertainment industry. The containers are molded in a black hard rubber special compound. On the versions with external power cables, cable glands with cable-saving spiral are provided to prevent breakage of the conductors due to bending and preserve the integrity of the cables over time. Input and outputs have their specific "voltage on" control lights.



Light to carry



Shock resistant



Extremely safe



Custom layouts

External box features

- Glow-wire-resistance 960°C according to EN 60695-2-11
- Excellent resistance to impacts
- Great electrical insulating qualities
- Self-extinguishing and hardy flammable
- Mechanical impacts IK10 according to EN 50102
- High mechanical strength
- UV and ozone resistance

Dimensions

Dimensions excluding the components installed on the box

Version	Height	Width	Depth
MiniBrick	80 mm	300 mm	75 mm

Technical data

MiniBrick Multipliers | Adapters

- **Rated voltage:** 230V 1pH+N+E 50Hz
- **Max. power:** 3.500W
- **Max. current:** 16amp (to be connected to a power supply having overload and short circuit protection)
- **Multipliers / adapters:** for Italian, French, German, Swiss and English electrical standards for industry and entertainment
- **Box made of hard rubber:** RAL 9011 black color
- **Red indicator:** for voltage ON
- **Includes 2m cable:** when supplied with inline input plug
- **Cable glands:** on the models with cable, the cable glands are supplied with anti-kink protection
- **Schuko plug:** with double earthing system (German and French system)
- **Data plate:** label with the data plate is affixed to the box and includes a progressive serial number
- **CE marked and compliant:** with EC 2006/95/EC Low Voltage Directive



16amp

Models with 5 Multistandard (Italian and German) 16amp Sockets IP2X

Part No.	IN	OUT	LOOP
SBF165LSMPLZ-L	CEE-17 16amp 3p 6h IP44 appliance inlet	5 italian/german system 10/16amp 3p IP2X sockets	CEE-17 16amp 3p 6h IP44 socket
SBF165LSMP0Z-L	CEE-17 16amp 3p 6h IP44 appliance inlet	5 italian/german system 10/16amp 3p IP2X sockets	NO LOOP
SBF165LSMVLZ-L	CEE-17 16amp 3p 6h IP44 plug	5 italian/german system 10/16amp 3p IP2X sockets	CEE-17 16amp 3p 6h IP44 socket
SBF165LSMV0Z-L	CEE-17 16amp 3p 6h IP44 appliance plug	5 italian/german system 10/16amp 3p IP2X sockets	NO LOOP
SBF165LSPCLZ-L	powerCON 20amp power-in blue	5 italian/german system 10/16amp 3p IP2X sockets	powerCON 20amp power-out grey
SBF165LSPC0Z-L	powerCON 20amp power-in blue	5 italian/german system 10/16amp 3p IP2X sockets	NO LOOP
SBF165LSPTLZ-L	powerCON True1 16amp appliance inlet	5 italian/german system 10/16amp 3p IP2X sockets	powerCON True1 16amp appliance inlet
SBF165LSP0Z-L	powerCON True1 16amp appliance inlet	5 italian/german system 10/16amp 3p IP2X sockets	NO LOOP
SBF165LSSCLZ-L	SCHUKO 16amp plug (dual earthing system)	5 italian/german system 10/16amp 3p IP2X sockets	SCHUKO 16amp 3p IP54 socket
SBF165LSSC0Z-L	SCHUKO 16amp plug (dual earthing system)	5 italian/german system 10/16amp 3p IP2X sockets	NO LOOP

16amp



**6 powerCON True1
16amp appliance outlet**

Part No.	IN	OUT	LOOP
SBF166PTMPLZ	CEE-17 16amp 3p 6h IP44 appliance inlet	6 powerCON True1 16amp appliance outlet	CEE-17 16amp 3p 6h IP44 socket
SBF166PTMP0Z	CEE-17 16amp 3p 6h IP44 appliance inlet	6 powerCON True1 16amp appliance outlet	NO LOOP
SBF166PTMVLZ	CEE-17 16amp 3p 6h IP44 plug	6 powerCON True1 16amp appliance outlet	CEE-17 16amp 3p 6h IP44 socket
SBF166PTMV0Z	CEE-17 16amp 3p 6h IP44 plug	6 powerCON True1 16amp appliance outlet	NO LOOP
SBF166PTPTLZ	powerCON True1 16amp appliance inlet	6 powerCON True1 16amp appliance outlet	powerCON True1 16amp appliance outlet
SBF166PTPT0Z	powerCON True1 16amp appliance inlet	6 powerCON True1 16amp appliance outlet	NO LOOP
SBF166PTPVLZ	powerCON True1 16amp male cable	6 powerCON True1 16amp appliance outlet	powerCON True1 16amp appliance outlet
SBF166PTPV0Z	powerCON True1 16amp male cable	6 powerCON True1 16amp appliance outlet	NO LOOP
SBF166PTSCLZ	SCHUKO 16amp plug (dual earthing system)	6 powerCON True1 16amp appliance outlet	SCHUKO 16amp 3p IP54 socket
SBF166PTSC0Z	SCHUKO 16amp plug (dual earthing system)	6 powerCON True1 16amp appliance outlet	NO LOOP

20amp



**6 powerCON
20amp Power-out grey**

Part No.	IN	OUT	LOOP
SBF166PCMPLZ	CEE-17 16amp 3p 6h IP44 appliance inlet	6 powerCON 20amp power-out grey	CEE-17 16amp 3p 6h IP44 socket
SBF166PCMP0Z	CEE-17 16amp 3p 6h IP44 appliance inlet	6 powerCON 20amp power-out grey	NO LOOP
SBF166PCMVLZ	CEE-17 16amp 3p 6h IP44 plug	6 powerCON 20amp power-out grey	CEE-17 16amp 3p 6h IP44 socket
SBF166PCMV0Z	CEE-17 16amp 3p 6h IP44 plug	6 powerCON 20amp power-out grey	NO LOOP
SBF166PCPCLZ	powerCON 20amp power-in blue (Max16amp)	6 powerCON 20amp power-out grey	powerCON 20amp power-out grey
SBF166PCPC0Z	powerCON 20amp power-in blue (Max16amp)	6 powerCON 20amp power-out grey	NO LOOP
SBF166PCSCLZ	SCHUKO 16amp plug (dual earthing system)	6 powerCON 20amp power-out grey	SCHUKO 16amp 3p IP54 socket
SBF166PCSC0Z	SCHUKO 16amp plug (dual earthing system)	6 powerCON 20amp power-out grey	NO LOOP



16amp

**Models with 4 CEE-17
16amp Sockets IP44**

Part No.	IN	OUT	LOOP
SBF164M1MPLZ	CEE-17 16amp 3p 6h IP44 appliance inlet	4 CEE-17 16amp 3p 6h IP44 sockets	CEE-17 16amp 3p 6h IP44 socket
SBF164M1MPOZ	CEE-17 16amp 3p 6h IP44 appliance inlet	4 CEE-17 16amp 3p 6h IP44 sockets	NO LOOP
SBF164M1MVLZ	CEE-17 16amp 3p 6h IP44 plug	4 CEE-17 16amp 3p 6h IP44 sockets	CEE-17 16amp 3p 6h IP44 socket
SBF164M1MV0Z	CEE-17 16amp 3p 6h IP44 plug	4 CEE-17 16amp 3p 6h IP44 sockets	NO LOOP



16amp

**4 German standard (schuko)
16amp Sockets IP54**

Part No.	IN	OUT	LOOP
SBF164SCMPLZ	CEE-17 16amp 3p 6h IP44 appliance inlet	4 SCHUKO 16amp 3p IP54 sockets	CEE-17 16amp 3p 6h IP44 socket
SBF164SCMPOZ	CEE-17 16amp 3p 6h IP44 appliance inlet	4 SCHUKO 16amp 3p IP54 sockets	NO LOOP
SBF164SCMVLZ	CEE-17 16amp 3p 6h IP44 plug	4 SCHUKO 16amp 3p IP54 sockets	CEE-17 16amp 3p 6h IP44 socket
SBF164SCMV0Z	CEE-17 16amp 3p 6h IP44 plug	4 SCHUKO 16amp 3p IP54 sockets	NO LOOP
SBF164SCPCLZ	powerCON 20amp power-in blue	4 SCHUKO 16amp 3p IP54 sockets	powerCON 20amp power-out grey
SBF164SCPC0Z	powerCON 20amp power-in blue	4 SCHUKO 16amp 3p IP54 sockets	NO LOOP
SBF164SCPTLZ	powerCON True1 16amp appliance inlet	4 SCHUKO 16amp 3p IP54 sockets	powerCON True1 16amp appliance outlet
SBF164SCPT0Z	powerCON True1 16amp appliance inlet	4 SCHUKO 16amp 3p IP54 sockets	NO LOOP
SBF164SCSCLZ	SCHUKO 16amp plug (dual earthing system)	4 SCHUKO 16amp 3p IP54 sockets	SCHUKO 16amp 3p IP54 socket
SBF164SCSC0Z	SCHUKO 16amp plug (dual earthing system)	4 SCHUKO 16amp 3p IP54 sockets	NO LOOP

13amp



**4 British standard
13amp Sockets IP54**

Part No.	IN	OUT	LOOP
SBF164BSMPLZ	C-FORM 16amp 3p 6h IP44 appliance inlet	4 british standard 13amp 3p IP54 sockets	C-FORM 16amp 3p 6h IP44 socket
SBF164BSMPOZ	C-FORM 16amp 3p 6h IP44 appliance inlet	4 british standard 13amp 3p IP54 sockets	NO LOOP
SBF164BSMVLZ	C-FORM 16amp 3p 6h IP44 plug	4 british standard 13amp 3p IP54 sockets	C-FORM 16amp 3p 6h IP44 socket
SBF164BSMV0Z	C-FORM 16amp 3p 6h IP44 plug	4 british standard 13amp 3p IP54 sockets	NO LOOP
SBF164BSPC LZ	powerCON 20amp power-in blue	4 british standard 13amp 3p IP54 sockets	powerCON 20amp power-out grey
SBF164BSPC0Z	powerCON 20amp power-in blue	4 british standard 13amp 3p IP54 sockets	NO LOOP
SBF164BSPT LZ	powerCON True1 16amp appliance inlet	4 british standard 13amp 3p IP54 sockets	powerCON True1 16amp appliance outlet
SBF164BSPT0Z	powerCON True1 16amp appliance inlet	4 british standard 13amp 3p IP54 sockets	NO LOOP
SBF164BS00 LZ	cable end free (max 13amp)	4 british standard 13amp 3p IP54 sockets	british standard 13amp 3p IP54 socket
SBF164BS000 LZ	cable end free (max 13amp)	4 british standard 13amp 3p IP54 sockets	NO LOOP

16amp



**4 Swiss standard
T23 16amp Sockets IP54**

Part No.	IN	OUT	LOOP
SBF164SSMPLZ	CEE-17 16amp 3p 6h IP44 appliance inlet	4 swiss standard 16amp 3p IP54 socket	CEE-17 16amp 3p 6h IP44 socket
SBF164SSMPOZ	CEE-17 16amp 3p 6h IP44 appliance inlet	4 swiss standard 16amp 3p IP54 sockets	NO LOOP
SBF164SSMVLZ	CEE-17 16amp 3p 6h IP44 plug	4 swiss standard 16amp 3p IP54 sockets	CEE-17 16amp 3p 6h IP44 socket
SBF164SSMV0Z	CEE-17 16amp 3p 6h IP44 plug	4 swiss standard 16amp 3p IP54 sockets	NO LOOP
SBF164SSPC LZ	powerCON 20amp power-in blue	4 swiss standard 16amp 3p IP54 sockets	powerCON 20amp power-out grey
SBF164SSPC0Z	powerCON 20amp power-in blue	4 swiss standard 16amp 3p IP54 sockets	NO LOOP
SBF164SSPT LZ	powerCON True1 16amp appliance inlet	4 swiss standard 16amp 3p IP54 sockets	powerCON True1 16amp appliance outlet
SBF164SSPT0Z	powerCON True1 16amp appliance inlet	4 swiss standard 16amp 3p IP54 sockets	NO LOOP
SBF164SS00 LZ	cable end free (max 16amp)	4 swiss standard 16amp 3p IP54 sockets	swiss standard 16amp 3p IP54 socket
SBF164SS000 LZ	cable end free (max 16amp)	4 swiss standard 16amp 3p IP54 sockets	NO LOOP



16amp

**4 French standard (NFC)
16amp Sockets IP54**

Part No.	IN	OUT	LOOP
SBF164FSMPLZ	CEE-17 16amp 3p 6h IP44 appliance inlet	4 french standard 16amp 3p IP54 sockets	CEE-17 16amp 3p 6h IP44 socket
SBF164FSMP0Z	CEE-17 16amp 3p 6h IP44 appliance inlet	4 french standard 16amp 3p IP54 sockets	NO LOOP
SBF164FSMVLZ	CEE-17 16amp 3p 6h IP44 plug	4 french standard 16amp 3p IP54 sockets	CEE-17 16amp 3p 6h IP44 socket
SBF164FSMV0Z	CEE-17 16amp 3p 6h IP44 plug	4 french standard 16amp 3p IP54 sockets	NO LOOP
SBF164FSPCLZ	powerCON 20amp power-in blue	4 french standard 16amp 3p IP54 sockets	powerCON 20amp power-out grey
SBF164FSPC0Z	powerCON 20amp power-in blue	4 french standard 16amp 3p IP54 sockets	NO LOOP
SBF164FSPTLZ	powerCON True1 16amp appliance inlet	4 french standard 16amp 3p IP54 sockets	powerCON True1 16amp appliance outlet
SBF164FSPT0Z	powerCON True1 16amp appliance inlet	4 french standard 16amp 3p IP54 sockets	NO LOOP
SBF164FS00LZ	cable end free (max 16amp)	4 french standard 16amp 3p IP54 sockets	swiss standard 16amp 3p IP54 socket
SBF164FS000Z	cable end free (max 16amp)	4 french standard 16amp 3p IP54 sockets	NO LOOP





Y-Splitters

Splitting made electrically safe,
as it should always be

Single-phase 2-way | 16amp | 32amp

PowerBox 2-way current multiplier is made in compliance with the electrical regulations, with the cables sized for the maximum current value even on the split output cables to grant full electrical safety. You can finally ditch non-compliant splitters made with two small section cables coming out of a plug. Our Y-splitters are made with H07RN-F cables with a junction area coated with a special hard rubber compound. Double insulation for IP67 waterproof protection. Safe and resistant over time. A fully reliable and safe multiplier for temporary use, with no shortcomings. 16amp and 32amp versions available, for 2.5 and 6 mm² cable sections, respectively.



So many possibilities

Choose the features you really need

The standard model has 3 x 30cm cables. Customized cable lengths and branding are available on request. Customers can also choose their preferred type of plugs and sockets, as well as their placement on cable ends as Standard and Reverse models are available. The Standard layout features the male plug on one end, with the 2 female sockets next to each other on the other side. The Reverse layout has one of the females on one side, with the male plug and the other female socket on the other side, next to each other. So many possibilities for your temporary power, as easy as that.



16amp

16amp Standard

Single phase 2-way

Max. voltage 220/240V 50/60Hz, Max. current 16amp, Max. power 3.500W, Y-splitter body is IP67, Total IP value depending on plug and connectors models.

Available versions

Default configurations are listed in the table. It is possible to customize cables lengths, plug and connectors type and imprint your own logo.

Part No.	Plug (1)	Connectors (2)	IP
2D1S2P16	1 CEE-17 16amp 3p 6h 230V IP44 black	2 x CEE-17 16amp 3p 6h 230V IP44 black	IP44
2D1S2P16S	1 CEE-17 16amp 3p 6h 230V IP67 black	2 x CEE-17 16amp 3p 6h 230V IP67 black	IP67
2D1S2P16SC	1 German / France (Schuko dual earthing system) 16amp 3p 230V IP44 black	2 x German (Schuko) 16amp 3p 230V IP44 black	IP44
2D1S2P16FR	1 German / France (Schuko dual earthing system) 16amp 3p 230V IP44 black	2 x France (NFC) 16amp 3p 230V IP44 black	IP44
2D1S2P16PT	1 powerCON TRUE1 TOP 16amp 3p 230V IP65 black	2 x powerCON TRUE1 TOP 16amp 3p 230V IP65 black	IP65



16amp

16amp Reverse

Single phase 2-way

Max. voltage 220/240V 50/60Hz, Max. current 16amp, Max. power 3.500W, Y-splitter body is IP67, Total IP value depending on plug and connectors models.

Available versions

Default configurations are listed in the table. It is possible to customize cables lengths, plug and connectors type and imprint your own logo.

Part No.	Plug (1)	Connectors (2)	IP
2D1S2P16R	1 CEE-17 16amp 3p 6h 230V IP44 black	2 x 2 x CEE-17 16amp 3p 6h 230V IP44 black	IP44
2D1S2P16RS	1 CEE-17 16amp 3p 6h 230V IP67 black	2 x CEE-17 16amp 3p 6h 230V IP67 black	IP67
2D1S2P16SCR	1 German / France (Schuko dual earthing system) 16amp 3p 230V IP44 black	2 x German (Schuko) 16amp 3p 230V IP44 black	IP44
2D1S2P16FRR	1 German / France (Schuko dual earthing system) 16amp 3p 230V IP44 black	2 x France (NFC) 16amp 3p 230V IP44 black	IP44
2D1S2P16PTR	1 powerCON TRUE1 TOP 16amp 3p 230V IP65 black	2 x powerCON TRUE1 TOP 16amp 3p 230V IP65 black	IP65

32amp



32amp Standard

Single phase 2-way

Max. voltage 220/240V 50/60Hz, Max. current 32amp, Max. power 7.000W, Y-splitter body is IP67, Total IP value depending on plug and connectors models.

Part No.	Plug (1)	Connectors (2)	IP
2D1S2P32	1 CEE-17 32amp 3p 6h 230V IP44 black	2 x CEE-17 32amp 3p 6h 230V IP44 black	IP44
2D1S2P32S	1 CEE-17 32amp 3p 6h 230V IP67 black	2 x CEE-17 32amp 3p 6h 230V IP67 black	IP67

Available versions

Default configurations are listed in the table. It is possible to customize cables lengths, plug and connectors type and imprint your own logo.

32amp



32amp Reverse

Single phase 2-way

Max. voltage 220/240V 50/60Hz, Max. current 32amp, Max. power 7.000W, Y-splitter body is IP67, Total IP value depending on plug and connectors models.

Part No.	Plug (1)	Connectors (2)	IP
2D1S2P32R	1 CEE-17 32amp 3p 6h 230V IP44 black	2 x CEE-17 32amp 3p 6h 230V IP44 black	IP44
2D1S2P32RS	1 CEE-17 32amp 3p 6h 230V IP67 black	2 x CEE-17 32amp 3p 6h 230V IP67 black	IP67

Available versions

Default configurations are listed in the table. It is possible to customize cables lengths, plug and connectors type and imprint your own logo.

32amp to 16 amp



32amp to 16amp

32amp single-phase 2-way 16amp

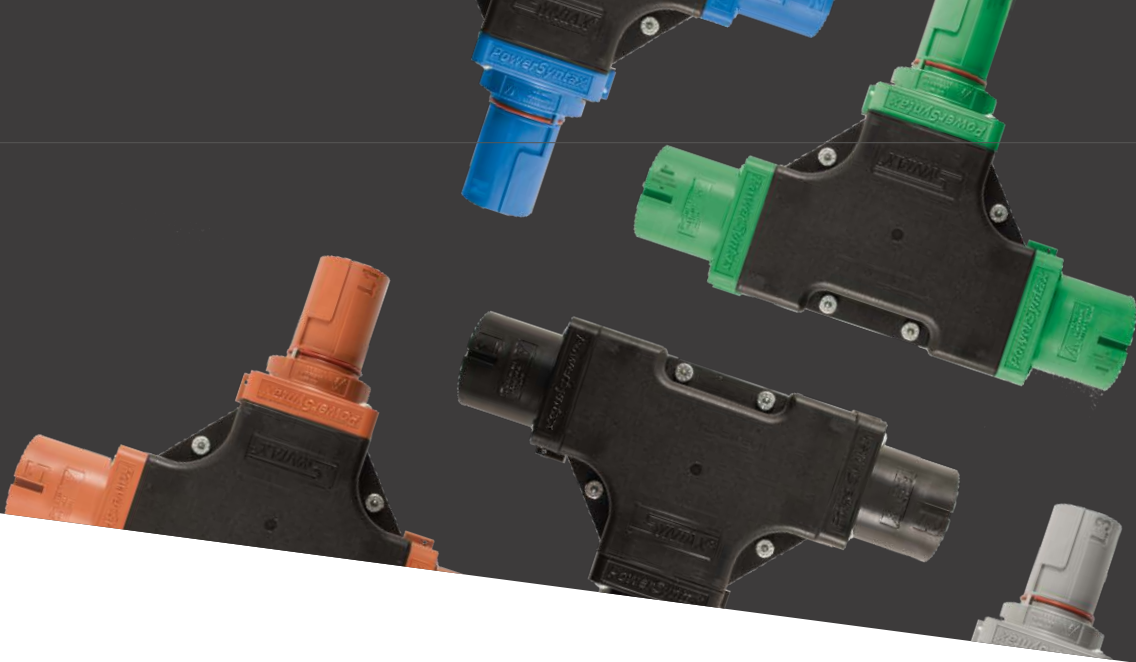
Max. voltage 220/240V 50/60Hz, Max. current 32amp, Max. power 7.000W, Y-splitter body is IP67, Total IP value depending on plug and connectors models.

Part No.	Plug (1)	Connectors (2)	IP
2D1S322P16	1 CEE-17 32amp 3p 6h 230V IP44 black	2 x CEE-17 16amp 3p 6h 230V IP44 black	IP44
2D1S322P16S	1 CEE-17 32amp 3p 6h 230V IP67 black	2 x CEE-17 16amp 3p 6h 230V IP67 black	IP67

Available versions

Default configurations are listed in the table. It is possible to customize cables lengths and imprint your own logo.

IMPORTANT: Current multiplier intended for specialized technical personnel and for temporary use only. To be used only under the conditions described in the product instructions.



S2W 480amp PowerSyntax multiplier

S2W with 1 drain | 2 source Syntax® PowerSyntax 480amp connectors. Available with EU, UK, AUS and USA color coding. Standard and reverse versions are available. The reverse version differs from the standard only for the position where the input connector is assembled (on the reverse version, the input is inline with one of the outputs).

Example p/n - EU color coding

1 input male	color	2 output female	color	Part Number
Line 1		Line 1		S2WX111000S
Line 2		Line 2		S2WX222000S
Line 3		Line 3		S2WX333000S
Neutral		Neutral		S2WXNNN000S
Ground		Ground		S2WXGGG000S

Notice:

- for the reverse version replace final "S" by "R" in the Part Number
- for the version with safety lacing add "-L" at the end of the Part Number
- IP67 or IP53 protection caps available on request.

Typical applications

- All temporary electrical systems
- Power distribution
- Outdoor concerts and sports events
- Outdoor broadcasting
- Theaters, studios and film sets
- Mobile generators
- Industrial vehicles
- Railway and military installations
- Load banks
- Back-up power systems

S2W 480amp PowerSyntax phase inverters/adaptors

The PowerSyntax Phase Inverters/Adaptors (up to 480A have been designed to solve two specific problems:

- reverse the rotation direction in 3-phase motors, etc. by changing the phase sequence (L1-L2-L3) between the power source and the connected devices;
- provide those who use only one model of phase conductor (L1, L2 or L3) to operate L1-L2-L3+Neutral systems with an interface between standard three-phase power generators/distros and their devices.

The former is a common demand in industrial applications. The latter is a specific need of entertainment and cinema industries. Standard and reverse versions are available (standard versions in the photo). The reverse version differs from the standard only for the position where the input connector is assembled (on the reverse version, the INPUT is inline with one of the outputs).

Available versions and p/n

1 input male	color	2 output female	color	Part Number
Line 1		Line 3		S2WX133000S
Line 2		Line 3		S2WX233000S
Line 3		Line 2		S2WX322000S
Line 1		Line 2		S2WX122000S
Line 2		Line 1		S2WX211000S
Line 3		Line 1		S2WX311000S

Notice:

- for the reverse version replace final "S" by "R" in the Part Number
- for the version with safety lacing add "-L" at the end of the Part Number
- IP67 or IP53 protection caps available on request.

VALENTINI

VALENTINI General Headquarters

Via Asti 84/A | 10098 Rivoli (TO) Italy
Tel: + 39 0119594160

POWERBOX Design and production facility

Via dei Metalmeccanici 56-57 | 55041 Camaiore (LU) Italy
Tel: + 39 0584338394

info@syntaxnet.it | sales@syntaxnet.it
www.valentininet.com



POWER BOX

is a Valentini SRL brand