

Syntax[®] Bayonet multipin connectors

MIL-C-5015 & VG95234
Available in a wide range of insert
arrangements and contact type

SYNTAX[®]



VALENTINI



Inventors, manufacturers, innovators.

Valentini is a dynamic, ever-evolving company operating in over 60 countries worldwide. For more than 30 years we have actively researched, designed and manufactured connectors for power, signal and hybrid applications. Our Syntax connectors have been used all over the world to manage power and electric signals in fields such as industry, automotive, broadcasting, shipbuilding & ship to shore power, international sporting events, live shows, military & national emergency management by agencies such as the Italian Civil Protection Department, and so many more. Valentini is an environmentally-aware company where respect for the environment is an integral part of the manufacturing process. Our team is motivated and mindful of details, as we know details are important in our pursuit of uncompromised quality and utmost reliability.

INDEX

04 Syntax Bayonet series

Typical applications
Shell features

06 Syntax SVK series

SVK inline and panel versions
Overall dimensions

10 Syntax SHD series

SHD inline and panel versions
Overall dimensions

14 Insert layouts, wiring lists and contacts for SVK and SHD series

17 SLS Stainless steel connectors

18 Syntax SVS series

SVS inline and panel versions
Overall dimensions
Insert layouts, wiring lists and contacts for SVS series

22 Syntax SPK series

SPK 25 pin, multiway grommet and overall dimensions
SPK 8 pin, adapter and overall dimensions
SPK 4 pin and overall dimensions
Contacts for SPK series

29 Rubber and Heavy Duty locking rings

30 Syntax SV series

SV inline and panel versions
Overall dimensions
Contacts for SV series
Stage Box "Cronista"

34 Syntax SB series

Insert arrangement layouts
Contacts for SB series

38 Cable protection and management

Wire mesh strain relief | Hanger grip | Pulling grip

41 IP67 protective caps

42 Syntax Cable glands

44 Multipair Cables for Bayonet series

46 Syntax Tools

48 Part Number

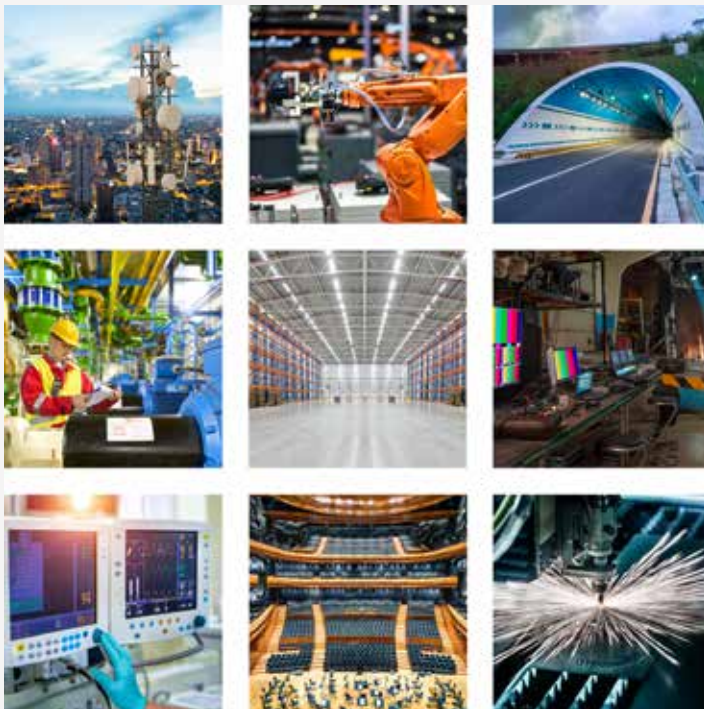
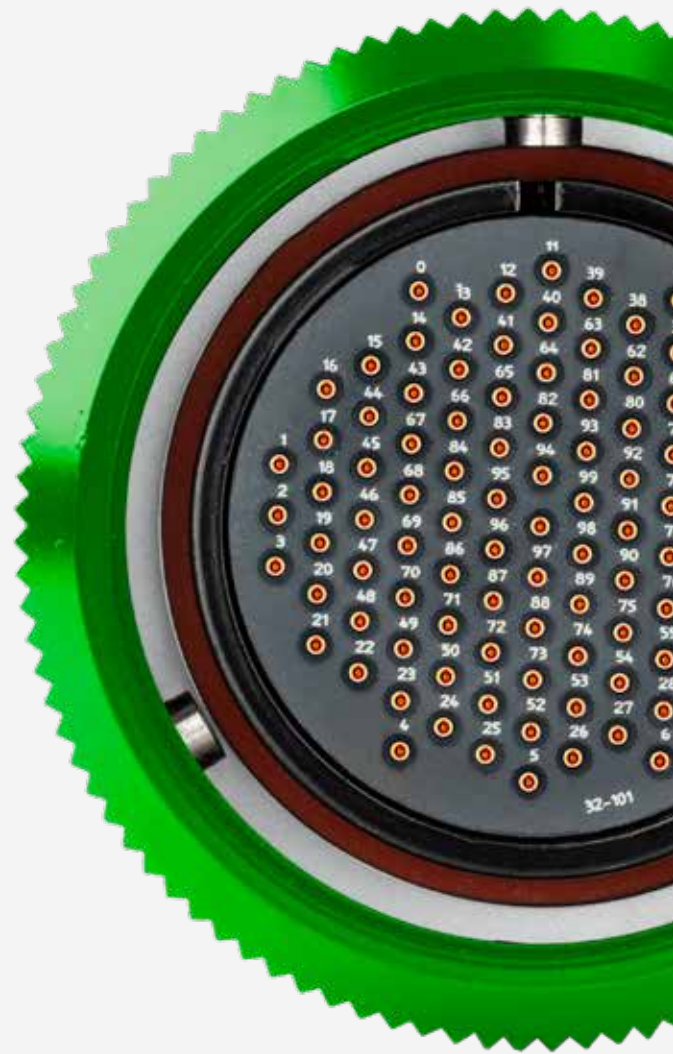


Syntax® Bayonet multipin connectors

MIL-C-5015 & VG95234

Many different shell sizes and insert arrangements for up to 150 contacts

Our Syntax circular bayonet multipin connectors are built in compliance with MIL-C-5015, now formally known as SAE-AS50151, and VG 95234 military standards, so they are designed and built to be tough and reliable, being at the same time extremely versatile. Our Bayonet family consists of 6 different connectors series suitable to a vast range of both indoor or outdoor applications and can carry signal and/or power, depending on the type of connection the job requires. Each series has its own peculiarities: the SVK and the SHD connectors offer 8 different insert arrangements from 13 to 150 pins, the SVK being a solid all-round choice, while the SHD is more focused on outdoor applications. The SPK series consists of 3 different power connectors: 4, 8 and 25 contacts. The 8-pin SPK is CA-COM compatible. The SVS connectors are designed to carry a large number of signal contacts in a slim body and come in 72 and 101 pin versions. The SB Series is available in 16 different insert arrangements and contact configurations and has a special eye for lighting applications. Finally, the SV series is designed for broadcasting and to carry multiple audio and video signals.



Typical applications

- Industrial automation
- Transport networks
- TV and radio broadcast
- Live entertainment
- Live events
- Conferences
- Surveillance networks
- Electrical power systems
- Power distribution
- Mobile generators
- Railway installations
- Military installations
- Backup power systems
- Electrical power supply companies
- Heavy industry

Bayonet series shell features

Multipin connectors



Firmer grip

Marked knurling on the whole circumference of locking-ring for optimal grip and easy coupling.
An audible click indicates that locking is complete.



Extra resistance

Thicker locking ring for high resistance to shocks. The aluminium housing for the neoprene insert does not protrude from the edge of the locking ring, avoiding ovalization due to accidental blows.



Simpler wiring

Extrawide backshell to allow easier wiring operations.



Bigger roller pins

Increased size of Coupling roller pins on locking-ring for more durability.



No vibrations

Vibration-proof stainless steel safety pin ensures high reliability of the connection in every working condition.



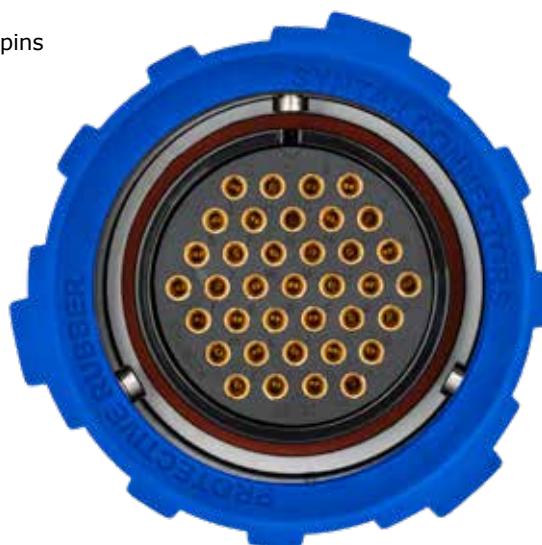
Syntax® SVK series

A synthesis for perfect balance

The Syntax® SVK series provides super-reliable military-grade connecting solutions in industrial machinery and automation, and in applications such as energy, managing of audio channels and connection of a wide range of devices. All details have been thoughtfully engineered to set a higher standard on circular multipin connectors and provide an unprecedented level of strength, durability and comfort. Its IP67 waterproof rating (when mated) makes the Syntax SVK series suitable for usage everywhere, either indoors or outdoors. On the females, the locking ring is comfortable to lock thanks to the deep knurl ridges, and has a thick-walled construction for increased durability in case of misuse or accidental blows. The roller pins ensure easy coupling with an audible click when connectors are locked. The Syntax SVK series is available in 8 different insert arrangement configurations, from 13 to 150 contacts. Compliant with MIL-C-5015 & VG95234 standards, RoHS.

Technical features

- SVK series available versions: 13, 19, 25, 37, 54, 85, 100 and 150 pins
- Compliant with MIL-C-5015 & VG 95234 military standards
- Aluminium alloy shells with abrasion resistant black electrophoresis finish
- Audible lock-up recognition system guaranteed for over 2000 mate and demate cycles
- Metal or rubber coated locking rings for easy coupling
- Bayonet lock stainless steel safety pin
- High precision gold or silver plated machined contacts for frictionless coupling and long term reliability
- Chloroprene high performance insulating rubber insert allowing easy contact insertion and removal for fast assembling or repair operations
- Standard or spiral flex cable glands ensure water tight sealing and optimal cable strain relief
- IP67 waterproof (when mated) for outdoor applications
- IP67 caps for waterproof protection even on unmated connectors



Inline versions

SVK Series



Inline female SVK series

Pins	Part Number
13	SVK013FV
19	SVK019FV
25	SVK025FV
37	SVK037FV
54	SVK054FV
85	SVK085FV
100	SVK100FV
150	SVK150FV

Inline male SVK series

Pins	Part Number
13	SVK013MV
19	SVK019MV
25	SVK025MV
37	SVK037MV
54	SVK054MV
85	SVK085MV
100	SVK100MV
150	SVK150MV



Panel versions
SVK Series



Panel female
SVK series

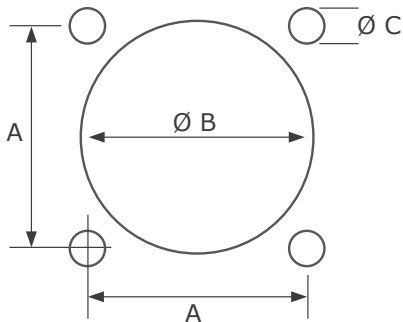
Pins	Part Number
13	SVK013FP
19	SVK019FP
25	SVK025FP
37	SVK037FP
54	SVK054FP
85	SVK085FP
100	SVK100FP
150	SVK150FP

Panel male
SVK series

Pins	Part Number
13	SVK013MP
19	SVK019MP
25	SVK025MP
37	SVK037MP
54	SVK054MP
85	SVK085MP
100	SVK100MP
150	SVK150MP



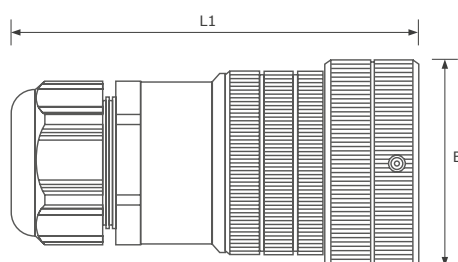
Cut-out dimensions
Panel connectors



Pins	A	Ø B	Ø C
13-19	29.4 mm	31.7 mm	3.1 mm
25	34.9 mm	35.3 mm	3.7 mm
37	39.7 mm	41.5 mm	3.7 mm
54	44.5 mm	47.9 mm	4.3 mm
85-100-150	55.5 mm	59.1 mm	4.3 mm

Overall dimensions

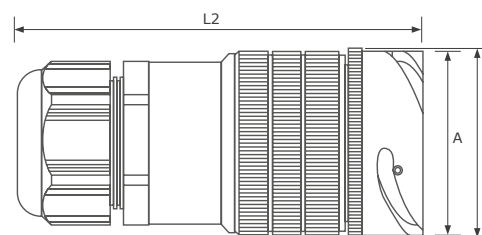
Inline and panel version



Inline female

Dimensions in mm

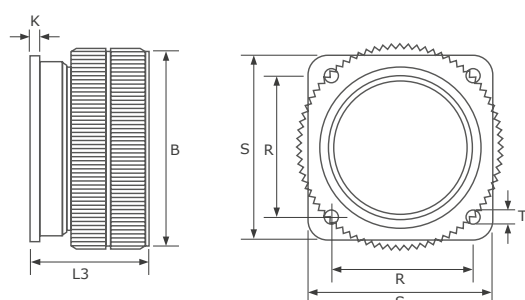
Pins	Shell size	Ø B Max	L1 Max	Cable clamp metric	Ø Cable Min-Max
13-19	20	43.0	103	M20	6-14
25	24	50.4	108	M25	6-18
37	28	56.0	116	M32	7-25
54	32	63.0	121	M32	7-25
85-100-150	40	75.0	147	M40	15-32



Inline male

Dimensions in mm

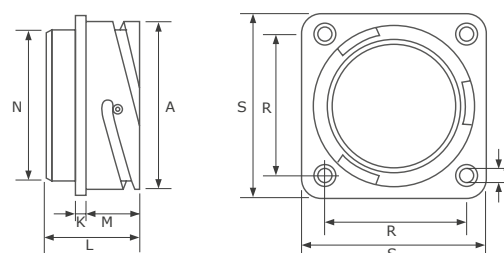
Pins	Shell size	Ø A Max +0/-0.15	Ø C Max	L2 Max	Cable clamp metric	Ø Cable Min-Max
13-19	20	40.0	43	102	M20	6-14
25	24	40.9	44	109	M25	6-18
37	28	46.7	50	116	M32	7-25
54	32	53.4	56	122	M32	7-25
85-100-150	40	65.5	69	147	M40	15-32



Panel female

Dimensions in mm

Pins	Shell size	Ø B Max	L3 Max	K ±0.2	R ±0.1	S ±0.3	T H13
13-19	20	43.0	38.1	4	29.4	38.0	3.2
25	24	50.4	40.6	4	34.9	44.5	3.7
37	28	56.0	40.8	4	39.7	50.8	3.7
54	32	63.0	43.7	4	44.5	57.0	4.4
85-100-150	40	75.0	44.8	4	55.6	69.8	4.4



Panel male

Dimensions in mm

Pins	Shell size	Ø A ±0.15	L ±0.3	K ±0.2	M +0.4/-0	Ø N Max	R ±0.1	S ±0.3	T H13
13-19	20	34.2	34.5	4	19.0	31.7	29.4	38.1	3.2
25	24	40.9	35.7	4	20.6	35.3	34.9	44.5	3.7
37	28	46.7	35.7	4	20.6	41.4	39.7	50.8	3.7
54	32	53.4	37.3	4	22.2	47.8	44.5	57.0	4.3
85-100-150	40	65.5	37.3	4	22.2	59.0	55.6	69.8	4.3





Syntax® SHD series

SHD Roadline connectors

Syntax Heavy Duty series

The Syntax® SHD Roadline series has set a new benchmark for industry standard MIL-C-5015 designs. An uncompromised solution providing super-reliable military-grade connections in such diverse fields as industrial machinery and automation, energy, managing of audio channels and connections of a wide range of devices. Suitable for any indoors or outdoor applications including live events, touring and broadcasting. Syntax® SHD Roadline extreme robustness guarantees long term reliability and an increased number of mating cycles in rigorous conditions. Compliant with MIL-C-5015 and VG 95234 standards, RoHS.

Bigger coupling roller pins and deeper knurled shells provide easy mating/unmating. Thicker machined construction prevents ovalization of the locking rings caused by unintentional blows. IP67 protective caps are available to ensure that the connectors are waterproof even when unmated. The Syntax IP67 protective caps are provided with special high-resistance lacing made up of seven stainless strands, covered by anti-scratch Teflon black tubing.

Technical features

- SHD series available versions: 13, 19,25, 37, 54, 85, 100 and 150 pins
- Compliant with MIL-C-5015 & VG 95234 military standards
- Increased thickness of the locking-ring ensures greater resistance to shocks
- Double backshell tightening
- Aluminium alloy shells with abrasion resistant black electrophoresis finish
- Audible lock-up recognition system guaranteed for over 2000 mate and demate cycles
- Metal or rubber coated locking rings for easy coupling
- Bayonet lock stainless steel safety pin
- High precision gold or silver plated machined contacts for frictionless coupling and long term reliability
- Chloroprene high performance insulating rubber insert allowing easy contact insertion and removal for fast assembling or repair operations
- Standard or spiral flex cable glands ensure water tight sealing and optimal cable strain relief
- Extra wide backshell for easier wiring
- IP67 waterproof (when mated) for outdoor applications
- IP67 caps for waterproof protection even on unmated connectors



Inline versions

SHD Series



Inline female SHD series

Pins	Part Number
13	SHD013FV
19	SHD019FV
25	SHD025FV
37	SHD037FV
54	SHD054FV
85	SHD085FV
100	SHD100FV
150	SHD150FV

Inline male SHD series

Pins	Part Number
13	SHD013MV
19	SHD019MV
25	SHD025MV
37	SHD037MV
54	SHD054MV
85	SHD085MV
100	SHD100MV
150	SHD150MV



Panel versions
SHD Series



Panel female
SHD series

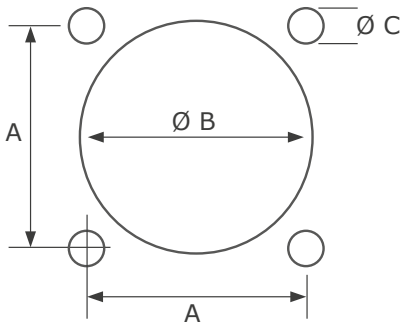
Pins	Part Number
13	SHD013FP
19	SHD019FP
25	SHD025FP
37	SHD037FP
54	SHD054FP
85	SHD085FP
100	SHD100FP
150	SHD150FP

Panel male
SHD series

Pins	Part Number
13	SHD013MP
19	SHD019MP
25	SHD025MP
37	SHD037MP
54	SHD054MP
85	SHD085MP
100	SHD100MP
150	SHD150MP



Cut-out dimensions
Panel connectors

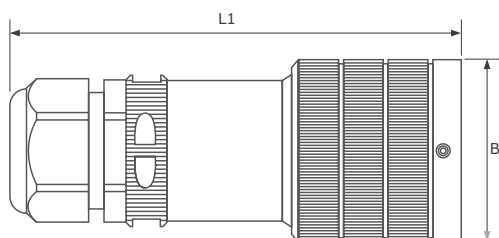


Pins	A	Ø B	Ø C
13-19	29.4 mm	31.7 mm	3.1 mm
25	34.9 mm	35.3 mm	3.7 mm
37	39.7 mm	41.5 mm	3.7 mm
54	44.5 mm	47.9 mm	4.3 mm
85-100-150	55.5 mm	59.1 mm	4.3 mm



Overall dimensions

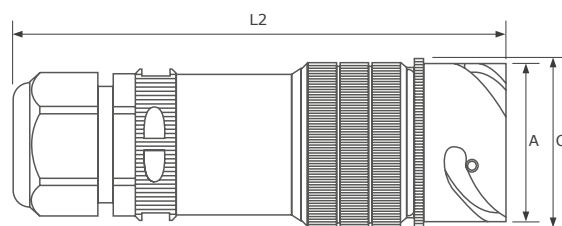
Inline and panel version



Inline female

Dimensions in mm

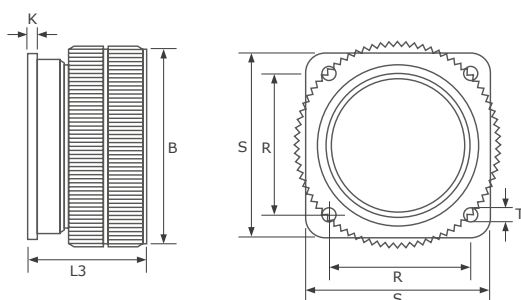
Pins	Shell size	Ø B Max	L1 Max	Cable clamp metric	Ø Cable Min-Max
13-19	20	43.0	153	M20	6-14
25	24	50.4	153	M25	6-18
37	28	56.0	158	M32	7-25
54	32	63.0	163	M32	7-25
85-100-150	40	75.0	186	M40	15-32



Inline male

Dimensions in mm

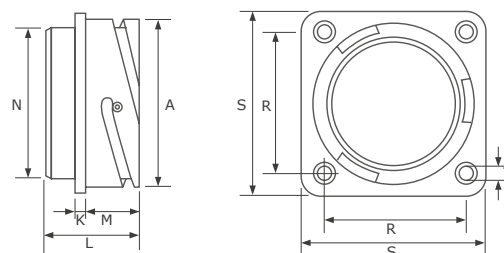
Pins	Shell size	Ø A Max +0/-0.15	Ø C Max	L2 Max	Cable clamp metric	Ø Cable Min-Max
13-19	20	40.0	43	102	M20	6-14
25	24	40.9	44	109	M25	6-18
37	28	46.7	50	116	M32	7-25
54	32	53.4	56	122	M32	7-25
85-100-150	40	65.5	69	147	M40	15-32



Panel female

Dimensions in mm

Pins	Shell size	Ø B Max	L3 Max	K ±0.2	R ±0.1	S ±0.3	T H13
13-19	20	43.0	38.1	4	29.4	38.0	3.2
25	24	50.4	40.6	4	34.9	44.5	3.7
37	28	56.0	40.8	4	39.7	50.8	3.7
54	32	63.0	43.7	4	44.5	57.0	4.4
85-100-150	40	75.0	44.8	4	55.6	69.8	4.4



Panel male

Dimensions in mm

Pins	Shell size	Ø A ±0.15	L ±0.3	K ±0.2	M +0.4/-0	Ø N Max	R ±0.1	S ±0.3	T H13
13-19	20	34.2	34.5	4	19.0	31.7	29.4	38.1	3.2
25	24	40.9	35.7	4	20.6	35.3	34.9	44.5	3.7
37	28	46.7	35.7	4	20.6	41.4	39.7	50.8	3.7
54	32	53.4	37.3	4	22.2	47.8	44.5	57.0	4.3
85-100-150	40	65.5	37.3	4	22.2	59.0	55.6	69.8	4.3



Double backshell tightening

Once wiring is carried out, both circular knurling and machined housings for customized wrench jaws on the backshell's edge contribute to easier locking. Tightening tools:

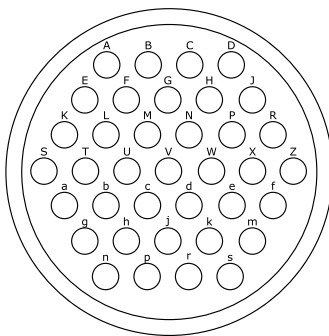
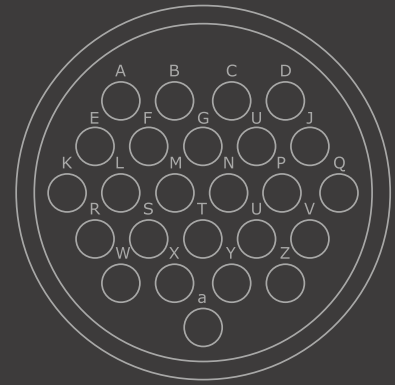
SVKT - KSW customized wrench (on machined housings)

SVKT - KSTRAP strap wrench (on knurling).

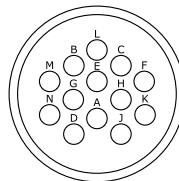
Insert layouts and wiring lists

Reference guide

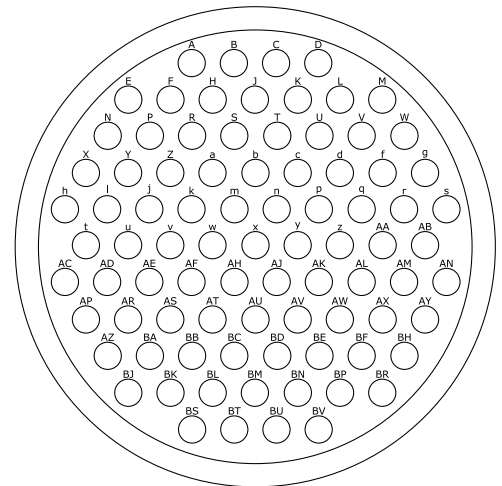
Male insert front view | SVK and SHD series



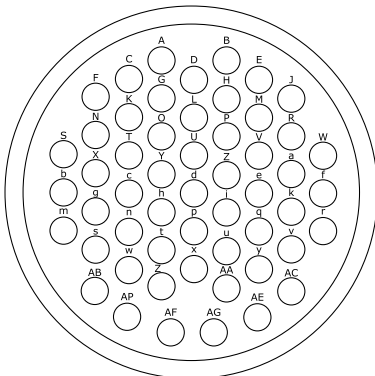
37 pin | size 28 (SVK-SHD)



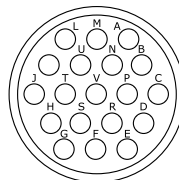
13 pin | size 20 (SVK-SHD)



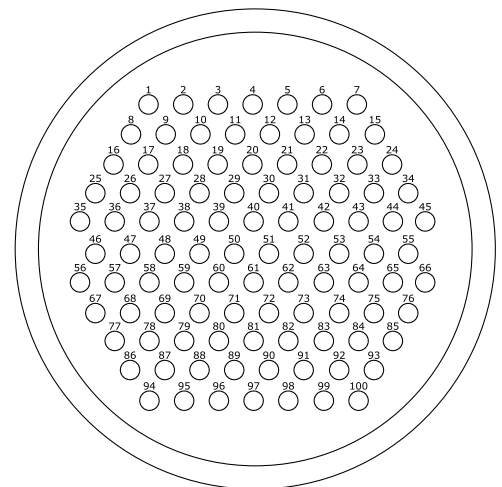
85 pin | size 40 (SVK-SHD)



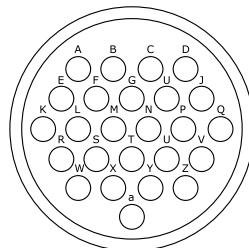
54 pin | size 32 (SVK-SHD)



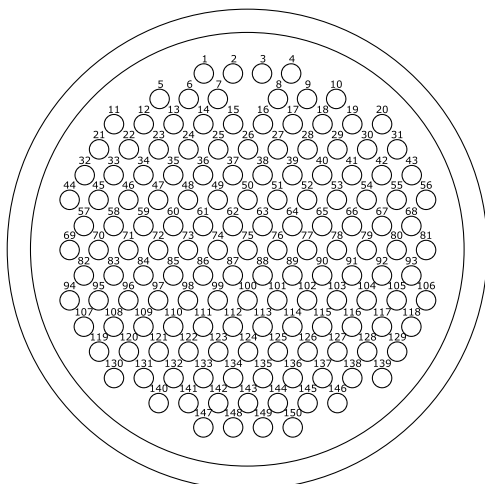
19 pin | size 20 (SVK-SHD)



100 pin | size 40 (SVK-SHD)



25 pin | size 24 (SVK-SHD)



150 pin | size 40 (SVK-SHD)

85 pin - 28 channels

Ch	Hot	Cold	Gnd
No.	+	-	⏏
1	A	B	C
2	E	F	H
3	J	K	L
4	N	P	R
5	S	T	U
6	X	Y	Z
7	a	b	c
8	d	f	g
9	h	i	j
10	k	m	n
11	p	q	r
12	t	u	v
13	w	x	y
14	z	AA	AB
15	AC	AD	AE
16	AF	AH	AJ
17	AK	AL	AM
18	AP	AR	AS
19	AT	AU	AV
20	AW	AX	AY
21	AZ	BA	BB
22	BC	BD	BE
23	BJ	BK	BL
24	BM	BN	BP
25	BS	BT	BU
26	BV	BR	BF
27	BH	AN	s
28	W	M	D

54 pin - 16 channels

Ch	Hot	Cold	Gnd
No.	+	-	⏏
1	W	f	r
2	J	R	a
3	k	v	AC
4	E	M	V
5	e	q	y
6	B	H	P
7	Z	j	u
8	D	L	U
9	d	p	x
10	A	G	O
11	Y	h	t
12	C	K	T
13	c	n	w
14	F	N	X
15	g	s	AB
16	S	b	m

13 pin - 4 channels

Ch	Hot	Cold	Gnd
No.	+	-	⏏
1	M	B	L
2	N	G	E
3	D	A	H
4	J	K	F

100 pin - 32 channels

Ch	Hot	Cold	Gnd
No.	+	-	⏏
1	1	2	3
2	4	5	6
3	7	8	9
4	10	11	12
5	13	14	15
6	16	17	18
7	19	20	21
8	22	23	24
9	25	26	27
10	28	29	30
11	31	32	33
12	34	35	36
13	37	38	39
14	40	41	42
15	43	44	45
16	46	47	48
17	49	50	51
18	52	53	54
19	55	56	57
20	58	59	60
21	61	62	63
22	64	65	66
23	67	68	69
24	70	71	72
25	73	74	75
26	76	77	78
27	79	80	81
28	82	83	84
29	85	86	87
30	88	89	90
31	91	92	93
32	94	95	96
33	97	98	99

37 pin - 12 channels

Ch	Hot	Cold	Gnd
No.	+	-	⏏
1	E	F	A
2	B	C	G
3	H	J	D
4	S	T	K
5	L	M	U
6	V	W	N
7	P	R	X
8	a	b	g
9	c	d	j
10	e	f	m
11	n	p	h
12	r	s	k

25 pin - 8 channels

Ch	Hot	Cold	Gnd
No.	+	-	⏏
1	A	E	F
2	G	C	B
3	D	H	J
4	M	L	K
5	Q	P	N
6	W	S	R
7	T	X	Y
8	Z	V	U

150 pin - 48 channels

Ch	Hot	Cold	Gnd
No.	+	-	⏏
1	1	2	3
2	5	6	7
3	8	9	10
4	11	12	13
5	14	15	16
6	17	18	19
7	21	22	23
8	24	25	26
9	27	28	29
10	30	31	32
11	32	33	34
12	35	36	37
13	38	39	40
14	41	42	43
15	44	45	46
16	47	48	49
17	50	51	52
18	53	54	55
19	57	58	59
20	60	61	62
21	63	64	65
22	66	67	68
23	69	70	71
24	72	73	74
25	75	76	77
26	78	79	80
27	82	83	84
28	85	86	87
29	88	89	90
30	91	92	93
31	94	95	96
32	97	98	99
33	100	101	102
34	103	104	105
35	56	81	106
36	107	108	109
37	110	111	112
38	113	114	115
39	116	117	118
40	119	120	121
41	122	123	124
42	125	126	127
43	139	128	129
44	130	131	132
45	133	134	135
46	136	137	138
47	140	141	142
48	143	144	145

19 pin - 6 channels

Ch	Hot	Cold	Gnd
No.	+	-	⏏
1	A	M	L
2	C	P	B
3	N	U	V
4	T	J	K
5	D	R	E
6	F	G	S



Contacts for SVK and SHD series

The secret behind a high quality connection

Male and female contacts | Silver - Gold
Size 16-18



FEMALE contacts

SOLDER



GOLD Armored | size 16
13/19/25/37/54/85 pin versions
Part No. **SVKP16GFZ**



GOLD | size 16
13/19/25/37/54/85 pin versions
Part No. **SVKP16GFS**

CRIMP



SILVER Armored | size 16
13/19/25/37/54/85 pin versions
Part No. **SVKP16SFK**



GOLD Armored | size 16
13/19/25/37/54/85 pin versions
Part No. **SVKP16GFK**



SILVER | size 18
13/19/25/37/54/85 pin versions
Part No. **SVKP16SFC**



GOLD | size 16
13/19/25/37/54/85 pin versions
Part No. **SVKP16GFC**



GOLD Armored | size 18
100/150 pin versions
Part No. **SVKP18GFK**

MALE contacts

SOLDER



GOLD | size 16
13/19/25/37/54/85 pin versions
Part No. **SVKP16GMS**

CRIMP



SILVER | size 16
13/19/25/37/54/85 pin versions
Part No. **SVKP16SMC**



GOLD | size 16
13/19/25/37/54/85 pin versions
Part No. **SVKP16GMC**



GOLD | size 18
100/150 pin versions
Part No. **SVKP18GMC**

Contacts rating Size 16 - Size 18

Size	Max current	Rated current	Max voltage drop	Wire section (mm2)	Wire section AWG
16	22 A	13 A	74mV	1÷1,5	18÷16
18	7.5 A	7.5A	83mV	0.15÷0.6	26÷20

Connectors rating SVK and SHD series

Contacts number	Operating voltage Vdc	Operating voltage Vac	Test voltage Vac	Min. Flashover Vac
13/19/25/150	250	1200	1000	1400
37/54/85/100	700	500	2000	2800



SLS Stainless steel connector Series

The high-end solution for professional connections.

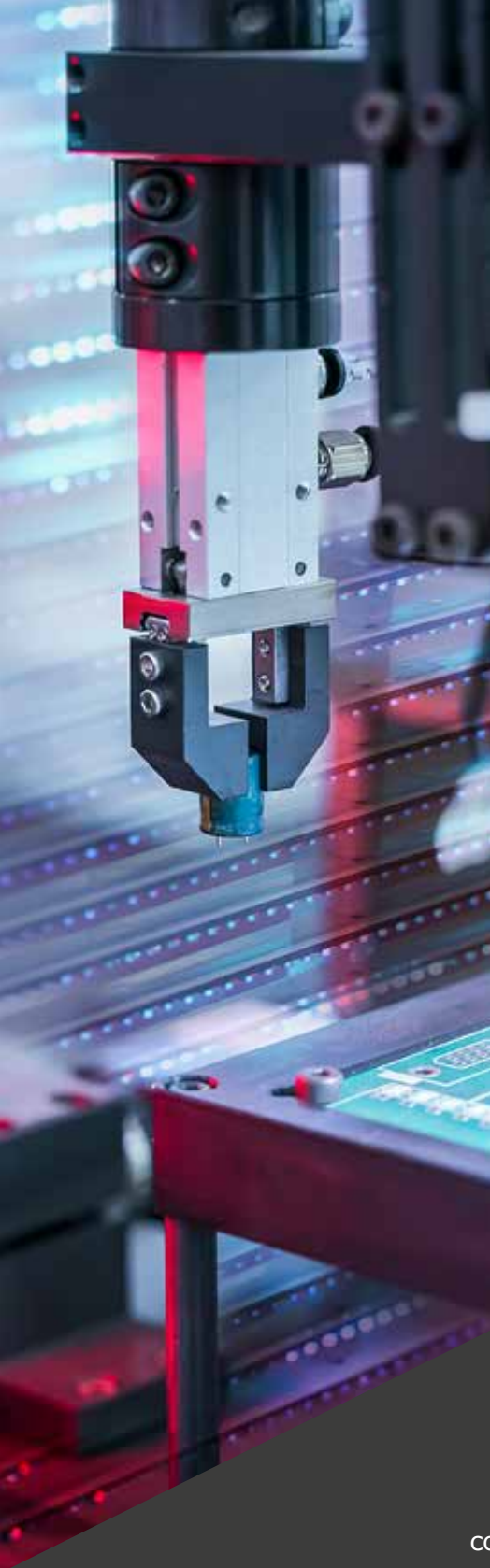
Whenever performances matter the most.

A new generation of connectors The new Syntax SLS series is a high-end solution for professional connections. The SLS series features a front shell made of stainless steel. Along with the all-aluminium construction of the existing Syntax connectors series such as SVK and SHD, the new SLS series completes the Syntax range with a focus on connections where high-precision contactation is needed. In particular, stainless steel's unique properties will enable our customers to easily take their ideal connection from concept to reality. While providing unprecedented connectors' lifespan and reliability, in fact, the adoption of steel originates a vast array of possibilities for new connectors' designs, making innovative breakthroughs possible and not restricted to large scale deployment solutions. A new generation of special, high-performance connectors for fiber optic, audio/video applications, combo systems and a virtually limitless number of high-precision future applications is now within reach.



Main advantages

- Extreme robustness
 - Highest durability
 - Greater resistance to wear and tear
 - Very high number of mating cycles
- (more than 10 times the number of cycles of all-aluminium shells)



Syntax® SVS series

Slim High Density connectors

The Syntax® SVS Slim High Density series connectors have been conceived and manufactured to set a higher standard for indoor as well for outdoor applications, thanks to their IP67 waterproof rating. SVS connectors are compliant with MIL-C-5015 VG 95234 military standards.

The new version of the series has been enhanced to achieve a higher level of strength and durability, thanks to a thicker backshell and locking ring. The locking ring is designed to prevent possible ovalization of the insert due to accidental blows, and also presents deeper knurling for the maximum ease of coupling and coupling roller pins.

Technical features

- SVS Slim high density series available versions 72 and 101 pins
- Compliant with MIL-C-5015 & VG 95234 military standards
- Aluminium alloy shells with abrasion resistant black electrophoresis finish
- Audible lock-up recognition system guaranteed for over 2000 mate and demate cycles
- Metal or rubber coated locking rings for easy coupling
- Bayonet lock stainless steel safety pin
- High precision gold or silver plated machined contacts for frictionless coupling and long term reliability
- Chloroprene high performance insulating rubber insert allowing easy contact insertion and removal for fast assembling or repair operations
- Standard or spiral flex cable glands ensure water tight sealing and optimal cable strain relief
- IP67 waterproof (when mated) for outdoor applications
- IP67 caps for waterproof protection even on unmated connectors



Inline and panel versions

SVS Series



Inline female
SVS series

Pins	Part Number
72	SVS072FV
101	SVS101FV



Inline male
SVS series

Pins	Part Number
72	SVS072MV
101	SVS101MV



Panel female
SVS series

Pins	Part Number
72	SVS072FP
101	SVS101FP

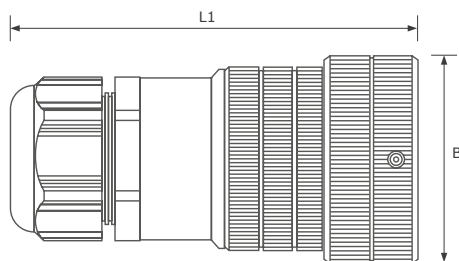


Panel male
SVS series

Pins	Part Number
72	SVS072MP
101	SVS101MP

Overall dimensions

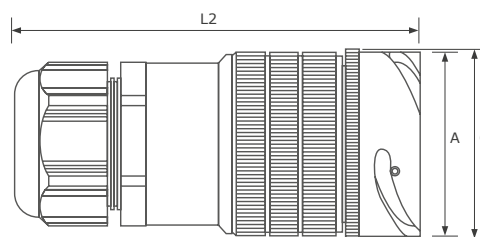
Inline and panel version



Inline female

Dimensions in mm

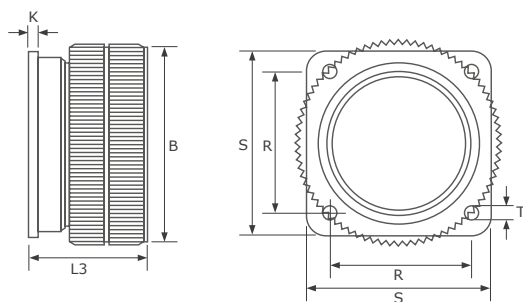
Pins	Shell size	Ø B Max	L1 Max	Cable clamp metric	Ø Cable Min-Max
72	28	56.0	116	M32	7-25
101	32	63.0	121	M32	7-25



Inline male

Dimensions in mm

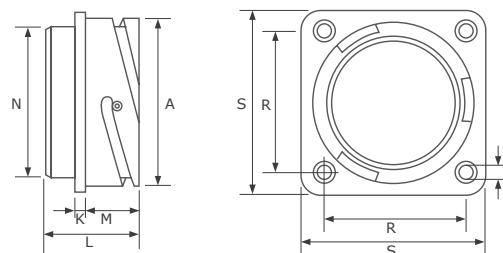
2,2 mm	Shell size	Ø A Max +0/-0.15	Ø C Max	L2 Max	Cable clamp metric	Ø Cable Min-Max
72	28	46.7	50	116	M32	7-25
101	32	53.4	56	122	M32	7-25



Panel female

Dimensions in mm

Pins	Shell size	Ø B Max	L3 Max	K ±0.2	R ±0.1	S ±0.3	T H13
72	28	56.0	40.8	4	39.7	50.8	3.7
101	32	63.0	43.7	4	44.45	57.0	4.4



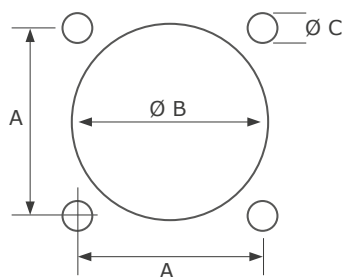
Panel male

Dimensions in mm

Pins	Shell size	Ø A ±0.15	L ±0.3	K ±0.2	M +0.4/-0	Ø N Max	R ±0.1	S ±0.3	T H13
72	28	46.7	35.7	4	20.6	41.4	39.7	50.8	3.7
101	32	53.4	37.3	4	22.2	47.8	44.5	57.0	4.3

Cut-out dimensions

Panel connectors



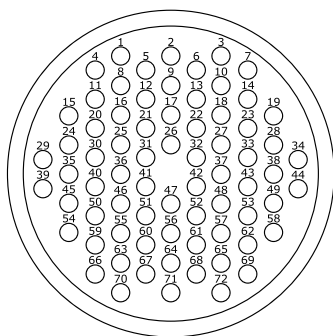
Pins	A	Ø B	Ø C
72	39.7 mm	41.5 mm	3.7 mm
101	44.5 mm	47.9 mm	4.3 mm



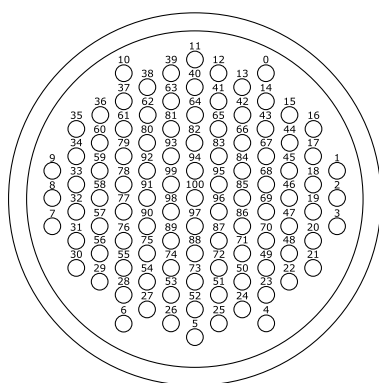
Insert layouts and wiring lists

Reference guide

Male insert front view | SVS series



72 pin | size 28 (SVS)



101 pin | size 32 (SVS)

101 pin - 32 channels

Ch	Hot	Cold	Gnd
No.	+	-	⏏
1	3	2	1
2	9	8	7
3	12	11	10
4	15	14	13
5	18	17	16
6	21	20	19
7	24	23	22
8	27	26	25
9	30	29	28
10	33	32	31
11	36	35	34
12	39	38	37
13	42	41	40
14	45	44	43
15	48	47	46
16	51	50	49
17	54	53	52
18	57	56	55
19	60	59	58
20	63	62	61
21	66	65	64
22	69	68	67
23	72	71	70
24	75	74	73
25	78	77	76
26	81	80	79
27	84	83	82
28	87	86	85
29	90	89	88
30	93	92	91
31	96	95	94
32	99	98	97

72 pin - 24 channels

Ch	Hot	Cold	Gnd
No.	+	-	⏏
1	3	2	1
2	5	6	7
3	9	8	4
4	13	14	10
5	15	11	12
6	18	17	16
7	22	23	19
8	24	20	21
9	27	26	25
10	33	34	28
11	30	31	32
12	36	35	29
13	44	38	37
14	41	42	43
15	45	39	40
16	48	47	46
17	52	53	49
18	54	50	51
19	57	56	55
20	61	62	58
21	63	59	60
22	69	65	64
23	66	67	68
24	72	71	70

Contacts for SVS series

The secret behind a high quality connection

Male and female contacts | Gold | Size 20



GOLD Armored female | size 20
72/101 pin versions
Part No. **SVKP20GFC**



GOLD male | size 20
72/101 pin versions
Part No. **SVKP20GMC**

Contacts rating Size 20

Size	Max current	Rated current	Max voltage drop	Wire section (mm ²)	Wire section AWG
20	10 A	7.5 A	83mV	0.15÷0.3	26÷22

Connectors rating SVS series

Contacts number	Operating voltage Vdc	Operating voltage Vac	Test voltage Vac	Min. Flashover Vac
72/101	250	1200	1000	1400



Syntax® SPK series

Carrying all the power you need

The Size 12 high conductive alloy machined contact is the heart of the SPK family. Each contact provides 41 amp max current and 23 amp rated current, making our SPK connectors ideal not only for the live entertainment world and loudspeakers connections, but also for industrial applications as well as for field operations that require high power. SPK connectors are compliant with MIL-C-5015 VG 95234 military standards and come in 3 different models: 4 pin, the smallest one, 8 pin, fully compatible with the CA-COM type connectors, and the new 25 pin, which can be used in combination with 3-way, 6-way or 12-way grommets.



Syntax SPK 25 pin

Inline and panel versions

The Syntax SPK 25 pin heavy duty features, common to all the bayonet multipin series connectors, are based on MIL-C-5015 and VG95234 mechanical specs and include IP67 rating, thick-wall construction shells and impact resistant locking rings. All these elements provide SPK 25 pin series with benchmarking robustness and durability. The SPK 25 pin can be used in combination with either a M40 or a M50 cable gland and, in combination with a special adapter, even with a M63 gland, which allows the use of 3 different multiway grommets.



Inline
with rubber coated locking ring
and M40 cable gland



Panel
with ramps



Inline
with ramps
and M50 cable gland

M50 to M63 cable gland adapter

for SPK 25 pin inline connectors

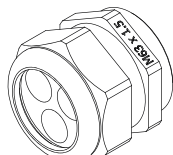
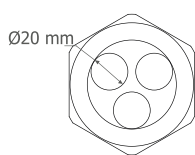
This adapter has been designed to allow the use of bigger M63 cable glands with the inline body of the 25 pin SPK connector, in order to use the 3-way, 6-way and the 12-way grommets.



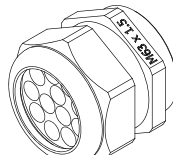
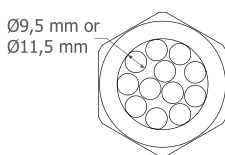
Multiway grommet

for M63 cable gland with adapter

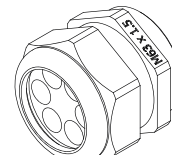
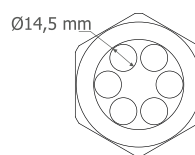
Multi-hole grommet allow easy cable splitting with specific solutions for 12 cables ($2 \times 2.5 \text{ mm}^2$ or $2 \times 4 \text{ mm}^2$) or 6 cables ($4 \times 4 \text{ mm}^2$) or 3 cables ($8 \times 4 \text{ mm}^2$).



3-way grommets
3x20 mm OD cables
Associated Syntax® cable:
Part Number **7Z8SX40**



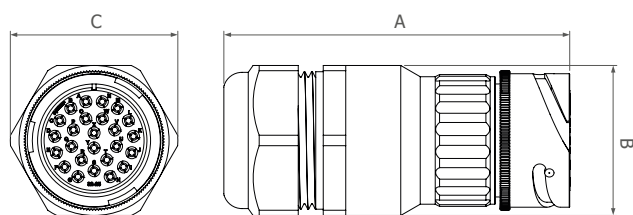
12-way grommets
12x9,5 mm or 12x11,5 mm OD cables
Associated Syntax® cable:
Part Numbers **7Z2SX25** (Ø9,5mm)
7Z2SX40 (Ø11,5mm)



6-way grommets
6x14,5 mm OD cables
Associated Syntax® cable:
Part Number **7Z4SX40**

Overall dimensions

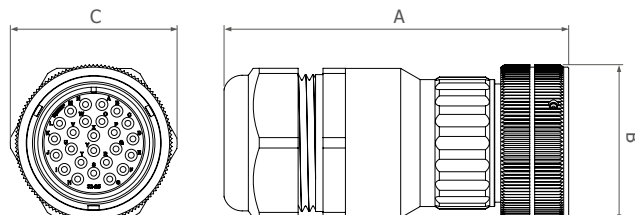
Inline and panel version 25 pin



Inline version

with ramps

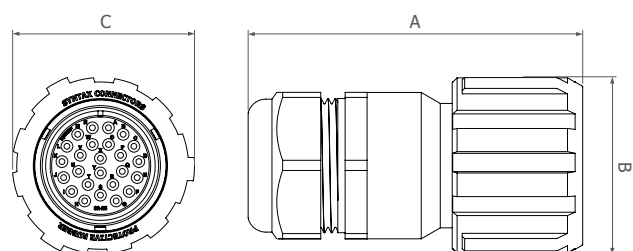
Cable gland	A	B	C
M40	~ 134 mm	Ø 60 mm	Ø 60 mm
M50	~ 139 mm	Ø 60 mm	Ø 67 mm
M63	~ 164 mm	Ø 70 mm	Ø 76,3 mm



Inline version

with standard aluminium locking ring

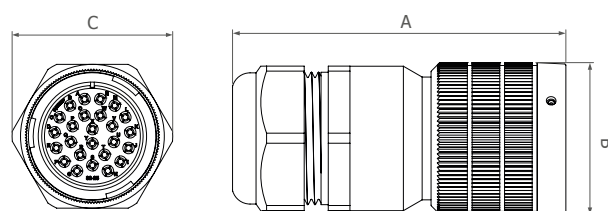
Cable gland	A	B	C
M40	~ 134 mm	Ø 63 mm	Ø 63 mm
M50	~ 139 mm	Ø 63 mm	Ø 67 mm
M63	~ 164 mm	Ø 63 mm	Ø 76,3 mm



Inline version

with rubber locking ring

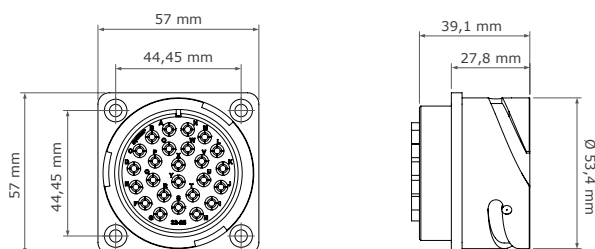
Cable gland	A	B	C
M40	~ 134 mm	Ø 75 mm	Ø 75 mm
M50	~ 139 mm	Ø 75 mm	Ø 75 mm
M63	~ 163 mm	Ø 75 mm	Ø 75 mm



Inline version

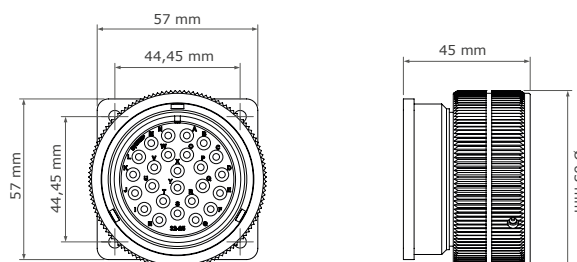
with aluminium heavy duty locking ring

Cable gland	A	B	C
M40	~ 134 mm	Ø 63 mm	Ø 63 mm
M50	~ 139 mm	Ø 63 mm	Ø 67 mm
M63	~ 164 mm	Ø 63 mm	Ø 76,3 mm



Panel version

with ramps



Panel version

with aluminium locking ring

Syntax SPK 8 pin

Inline and panel versions

Syntax® SPK connectors are available in the 8 pin configuration, fully intermateable with the widely used CA-COM connectors. As a typical application, for example, the SPK 8-pin allows the conveyance of high electric power signal to professional loudspeakers. The design presents the same key features of SVK Series, and can be supplied with rubber covered locking ring and with gold plated solder-type contacts. The SPK series connectors are solidly-built so to ensure long term reliability. Moreover, they do not present the shortcomings of older connectors still used in industrial or military environments.



Inline versions

SPK 8 pin Series



Inline
with rubber locking ring
and M32 cable gland



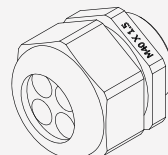
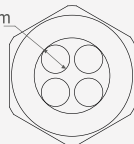
Inline
with ramps
and M32 cable gland



Inline
with aluminium locking ring
and M32 cable gland

4-way grommets
4x12 mm OD cables
Associated Syntax® cable:
Part Number **7Z2SX40**

Ø12 mm



8 pin Adapter

For 8 pin extension cables

Part Number **SPK008ADIV**

The SPK 8 pin extension cables (CA-COM 8 compatible) typically feature a male connector at one end and a female connector at the other end, with locking rings on both terminations to allow the connection to panel mount devices without locking rings. Such configuration prevents the possibility of joining multiple cables and make longer extensions. SPK 8 pin adapter permits the connection of more extension cords together. The male and female connections of the SPK 8 pin adapter are without locking rings. This allow users to extend the length of a SPK 8 pin Speaker cable by joining two existing cables with locking rings together.

- Compatible with Syntax SPK 8 pin connector, CA-COM 8 and all other series with insert 22-23 (8 pins) compliant with MIL C5015 & VG95234 standards
- Allows users of SPK 8 pin to create longer extensions
- Heavy duty aluminum body for maximum durability
- Obtained through machining of aluminum special alloy
- Typical environments and markets: theatres, PA (concert touring) applications, live events, permanent installations



Panel versions

SPK 8 pin Series



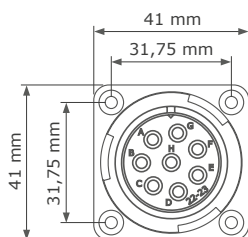
Panel
with ramps



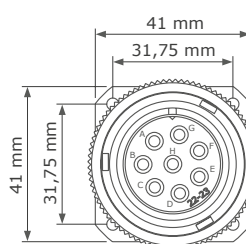
Panel
with aluminium locking ring

Overall dimensions

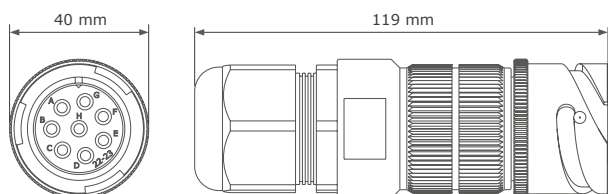
Inline and panel version 8 pin



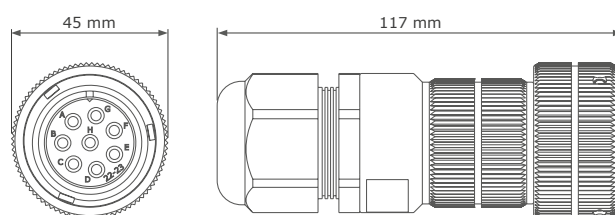
Panel version
with ramps



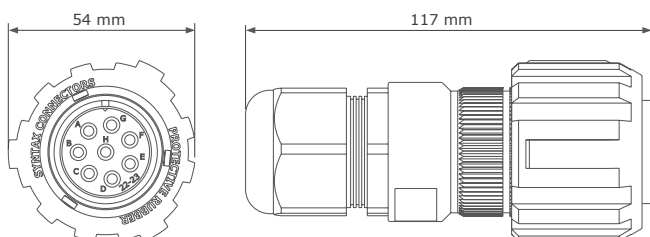
Panel version
with aluminium locking ring



Inline version
with ramps



Inline version
with aluminium locking ring



Inline version
with rubber locking ring





Syntax SPK 4 pin

Inline and panel versions

The smallest connector in the SPK family is the 4 pin. Like its bigger brothers and, in general, all the connectors in the bayonet multipin series, the SPK 4 pin is compliant with MIL-C-5015 VG 95234 military standards. The design presents the same key features of SVK Series, and can be supplied with gold plated solder-type contacts. The SPK series connectors are solidly-built so to ensure long term reliability.



Inline male and female
with locking rings
and M20 cable gland



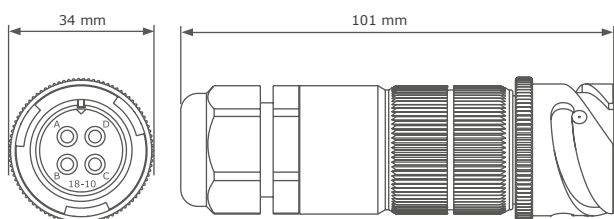
Inline male and female
with ramps
and M20 cable gland



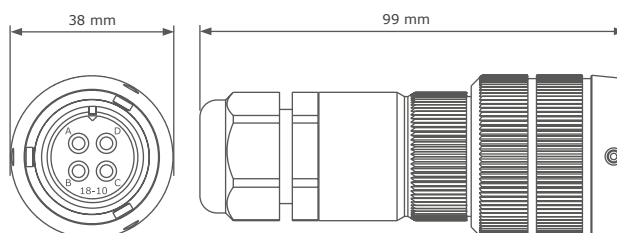
Panel male and female
with ramps

Overall dimensions

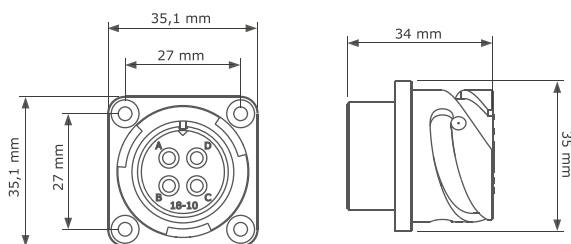
Inline and panel version 4 pin



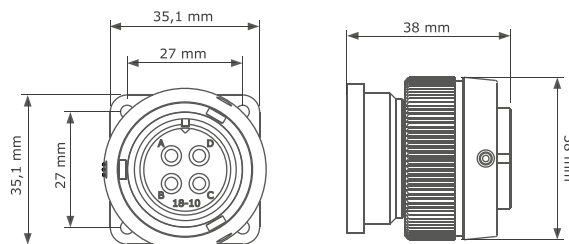
Inline version
with ramps



Inline version
with aluminium locking ring



Panel version
with ramps

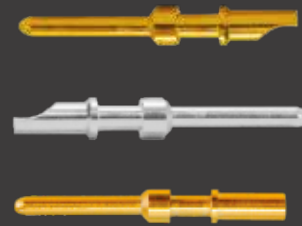


Panel version
with aluminium locking ring

Contacts for SPK series

The secret behind a high quality connection

Male and female contacts | Silver - Gold
Size 12



FEMALE contacts

SOLDER



GOLD Armored | size 12
Part No. **SPKP12GFZ**



GOLD | size 12
Part No. **SPKP12GFS**



SILVER Armored | size 12
Part No. **SPKP12SFZ**



SILVER | size 12
Part No. **SPKP12SFS**

CRIMP



GOLD for 2,5 mm² | size 12
Part No. **SPKP12GFC**



GOLD for 4 mm² | size 12
Part No. **SPKP12GFC4**



GOLD Armored for 2,5 mm² | size 12
Part No. **SPKP12GFK**



GOLD Armored for 4 mm² | size 12
Part No. **SPKP12GFK4**



SILVER for 2,5 mm² | size 12
Part No. **SPKP12SFC**



SILVER for 4 mm² | size 12
Part No. **SPKP12SFC4**



SILVER Armored for 2,5 mm² | size 12
Part No. **SPKP12SFK**



SILVER Armored for 4 mm² | size 12
Part No. **SPKP12SFK4**

MALE contacts

SOLDER



GOLD | size 12
Part No. **SPKP12GMS**



SILVER | size 12
Part No. **SPKP12SMS**

CRIMP



GOLD for 2,5 mm² | size 12
Part No. **SPKP12GMC**



SILVER | size 12
Part No. **SPKP12SMC**



GOLD for 4 mm² | size 12
Part No. **SPKP12GMC4**



SILVER | size 12
Part No. **SPKP12SMC4**

Technical data SPK series

Voltage rating AC	Voltage rating DC	Max current	Rated current	Potential drop	Dielectric strenght Test voltage	Min. Flashover
1250 V	900 V	41 Amps	23 Amps	63 mV	2800 Vac RMS	3600 Vac RMS

Customize and color code your connectors

Rubber coated and Heavy Duty locking rings

Available in multiple sizes for models in the SVK, SHD, SVS, SPK, SB, SV families of Syntax® Bayonet multipin connectors. Multiple color options available in stock. For special color customizations, according to RAL tables, please contact our Sales department.

Rubber coated locking rings

The thoughtful design of the locking ring ensures optimal grip on the whole circumference and easy coupling. The thick wall construction of the inner metal ring, in fact, provides unparalleled resistance to all possible forms of abuse. It represents an evolution of the common rubber-coated rings and solves the problem of their being mechanically weaker compared to all-metal construction rings. An audible click indicates that locking is complete. The roller pins ensure smoother coupling and more durability. With their increased size, these characteristics have now been further emphasized.



Heavy Duty locking rings

The Syntax® Heavy duty locking ring has been built to be super resistant to the shocks and compressions of everyday extensive usage. Black painted finish. On request, anodized finish is available in different colors.

Availability chart

Find the version you need

Our color coded locking rings are available in multiple sizes for the following series and models:



Size	Series	Connector version
18	SPK	4 pin (Heavy Duty only)
20	SVK - SHD	13 - 19 pin
	SB	20-15
22	SPK	8 pin
	SB	22-1 22-2 22-22
24	SVK - SHD	25 pin
	SB	24-11 24-2
28	SVK - SHD	37 pin
	SVS	72 pin
	SB	28A-9 28-22 28-3 28-6 28-10
	SV	-
32	SVK - SHD	54 pin
	SVS	101 pin
	SB	32A-9 32-5
40	SVK - SHD	85 100 150 pin
	SB	40A-10



Syntax® SV series

Audio/Video connectors and stage boxes

The Syntax® SV Audio/Video connectors have been designed for professional broadcasting, and are especially suitable for outdoor usage even in harsh conditions. The SV range include inline and panel mount connectors, male and female, as well as the Syntax 7YVD6DG8HD combi audio/video cable with 6 video and 8 audio channels, and male or female break-out boxes. This insert arrangement houses 24 audio signal contacts and 6 video coaxial contacts suited for RG59 coaxial cable.

Technical features

- Compliant with MIL-C-5015 & VG 95234 military standards
- Aluminium alloy shells with abrasion resistant black electrophoresis finish
- Audible lock-up recognition system guaranteed for over 2000 mate and demate cycles
- Metal or rubber coated locking rings for easy coupling
- Bayonet lock with stainless steel safety pin
- Gold plated machined contacts for quality signal transmission and long term reliability
- Chloroprene high performance insulating rubber insert allowing easy contact insertion and removal for fast assembling or repair operations
- Cable gland retention system, ensures waterproof sealing and good strain relief at the cable entry
- IP67 waterproof (when mated) for outdoor applications
- IP67 caps for waterproof protection even on unmated connectors



Inline and panel versions SV Series



Inline female
SV series

Part Number	Description
SV25/6FV-GCMONO	SV Female Inline



Inline male
SV series

Part Number	Description
SV25/6MVRGCMONO	SV Male Inline



Panel female
SV series

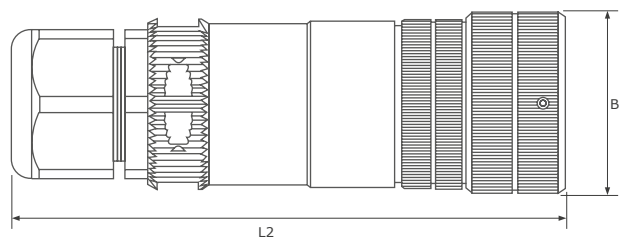
Part Number	Description
SV25/6FP-GC0000	SV Female Panel



Panel male
SV series

Part Number	Description
SV25/6MPRG0000	SV Male Panel

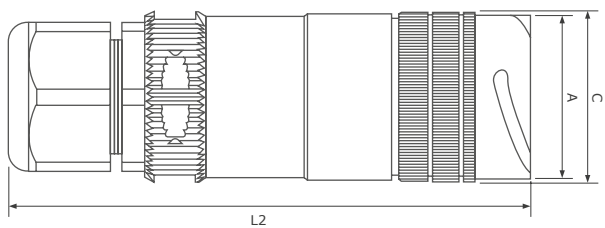
Overall dimensions
Inline and panel version



Inline female

Dimensions in mm

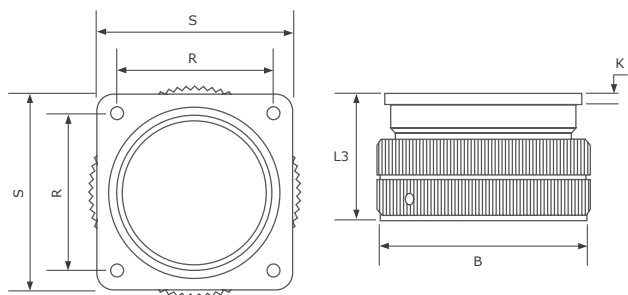
Shell size	BØ Max	L1 Max	Cable clamp metric	Ø Cable Min-Max
28	56.0	116	M32	7 25



Inline male

Dimensions in mm

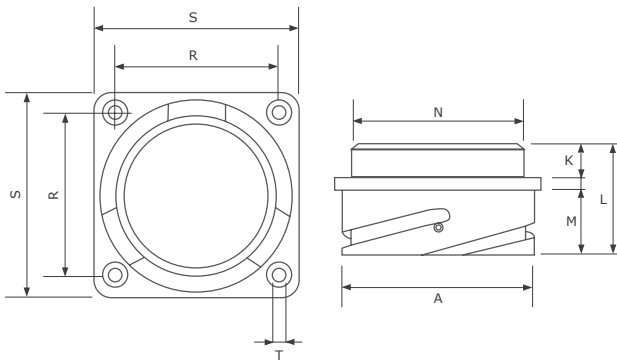
Shell size	AØ Max +0/-0.15	ØC Max	L2 Max	Cable clamp metric	Ø cable Min-Max
28	46.7	50	116	M32	7 - 25



Panel female

Dimensions in mm

Shell size	Ø B Max	L3 Max	K ±0.2	R ±0.1	S ±0.3	T H13
28	56.0	40.8	4	39.7	50.8	3.7

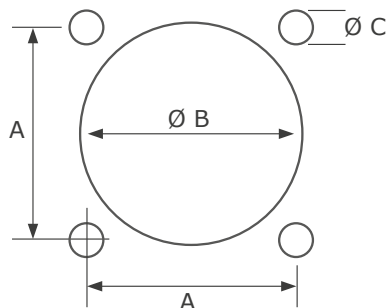


Panel male

Dimensions in mm

Shell size	AØ Max +0/-0.15	K ±0.2	L ±0.3	M ±0.4/-0	Ø N Max	R ±0.1	S ±0.3	T H13
28	46.7	4	35.7	20.6	41.4	39.7	50.8	3.7

Cut-out dimensions
Panel connectors



Shell size	A	Ø B	Ø C
28	39.7 mm	41.5 mm	3.7 mm



Contacts for SV series

The secret behind a high quality connection

RG 59 | Size 20 | Crimp | Gold



GOLD Crimp RG 59 female | size 20
Part No. **SVKP20GFC**



GOLD Crimp RG 59 male | size 20
Part No. **SVKP59CXGMC**



GOLD Crimp female | size 20
Part No. **SVKP20GFC**



GOLD Crimp male | size 20
Part No. **SVKP20GMC**

Stage box “Cronista”

Break-out or break-in stage boxes with SV combi multipin connector and 8 XLRs + 6 BNCs

Steel stage box for audio and video signal distribution. Break-out box version features a male Syntax SV 25/6 multipin audio/video combi connector with female XLRs and BNCs. The break-in version, on the other hand, features a female Syntax SV 25/6 with male XLRs and BNCs.



Break-in Box configuration

Signal distribution is obtained through the exclusive Syntax SV multipin connector (male or female), with 24 gold-plated pins for audio signal and 6 gold-plated pins for 75 Ohm video signal. Protection cap is provided.

Frame

Steel stage box with trapezoidal section and high mechanical resistance sides, painted in polyepoxidic anti-scratch black paint. Output connectors on the leaning sides guarantee easy channel identification when connecting. Channel numbering by indelible laser-carving is also provided. 4 nylon feet sustain the base, ensuring stability and the necessary ground-detachment. On the side opposite to the multipin connector, three holes have been specifically designed for vertical hooking.

Break-out Box configuration

Audio connection through 8 XLR panel (female or male) 3-pin connectors, arranged in two lines of 4, one per each side. Video connection through 6 BNC panel connectors arranged in two lines of 3, one per each side, with earth connection detached from the frame.

Internal connections

The audio interconnection between multipin connector and XLR connectors is arranged through a shielded balanced cable, made of 2 signal conductors, 1 drain wire and aluminium foil screen. The multipin connector cabling is attained through crimping, while the XLR connector cabling through soldering. The video interconnection between the multipin connector and BNC connectors is carried out through RG59 75 Ohm double-shielded cable, made of a one-signal conductor, a copper tinned braid shield and an aluminium foil screen. Video channel cabling is carried out through crimping to guarantee a good mechanical resistance and a steady impedance, avoiding signal loss.



Syntax® SB series

**Signal and power
underneath a flawless suit.**

The Syntax® SB connector's mechanical features ensure high quality, extreme durability and safe connections. The SB series is available in 16 different arrangement layouts for the inserts, with contacts ranging from size 0 to 16S, allowing transmission of power and signals. SB connectors are compliant with MIL-C-5015 VG 95234 military standards. A typical application for the SB Series is the connection between HMI ballasts and lamps: the SB family includes connectors compatible with all major HMI lamp manufacturer specifications, covering 400W-20KW HMI ranges. The locking ring has been increased in thickness to avoid risk of damage. Bayonet lock with coupling roller pins ensures easy mating, granting high quality connections over a high number of coupling cycles.

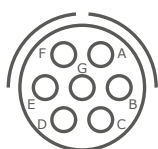
Technical features

- Compliant with MIL-C-5015 & VG 95234 military standards
- Aluminium alloy shells with abrasion resistant black electrophoresis finish
- Metal or rubber coated locking rings for easy coupling
- Silver-plated crimp or solder-type contacts
- Bayonet lock stainless steel safety pin
- Audible lock-up recognition system guaranteed for over 2000 mate and demate cycles
- IP67 waterproof (when mated) for outdoor applications
- IP67 caps for waterproof protection even on unmated connectors
- Standard insulating insert range -55° to 125° C (also available 70° to 200° C)



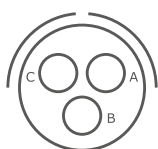
Insert arrangement layouts

Contact types & quantities



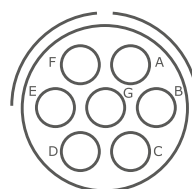
16S-1

Arrangement	16S-1
Total contacts	7
Contact type(s)	Size 16S
Service rating	A



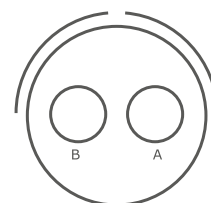
16-10

Arrangement	16-10
Total contacts	3
Contact type(s)	Size 12
Service rating	A



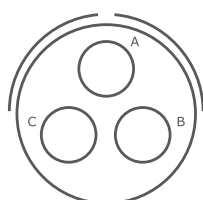
20-15

Arrangement	20-15
Total contacts	7
Contact type(s)	Size 12
Service rating	A



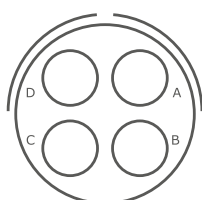
22-1

Arrangement	22-1
Total contacts	2
Contact type(s)	Size 8
Service rating	D



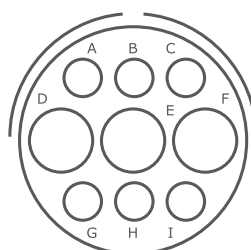
22-2

Arrangement	22-2
Total contacts	3
Contact type(s)	Size 8
Service rating	D



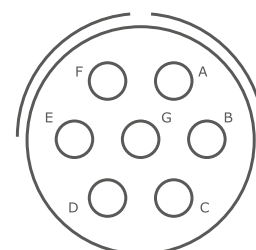
22-22

Arrangement	22-22
Total contacts	4
Contact type(s)	Size 8
Service rating	A



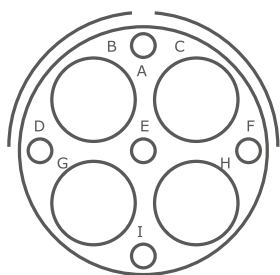
24-11

Arrangement	24-11
Total contacts	9
Contact type(s)	Size 8 (3) Size 12 (6)
Service rating	A



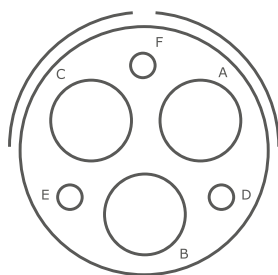
24-2

Arrangement	24-2
Total contacts	7
Contact type(s)	Size 12
Service rating	D



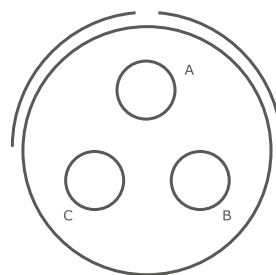
28A-9

Arrangement	28A-9
Total contacts	9
Contact type(s)	Size 4 (4) Size 16 (5)
Service rating	A



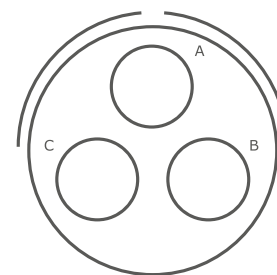
28-22

Arrangement	28-22
Total contacts	6
Contact type(s)	Size 4 (3) Size 16 (3)
Service rating	D



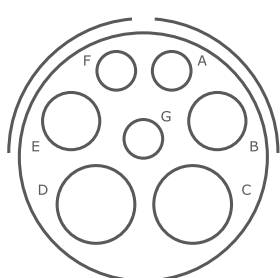
28-3

Arrangement	28-3
Total contacts	3
Contact type(s)	Size 8
Service rating	E



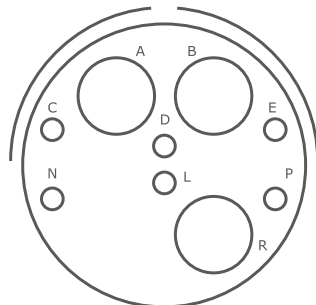
28-6

Arrangement	28-6
Total contacts	3
Contact type(s)	Size 4
Service rating	D



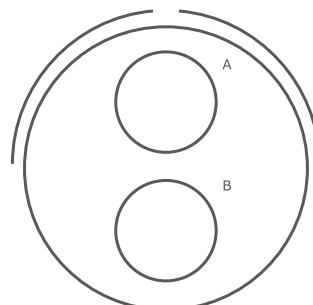
28-10

Arrangement	28-10
Total contacts	7
Contact type(s)	Size 4 (2) Size 8 (2) Size 12 (3)
Service rating	A



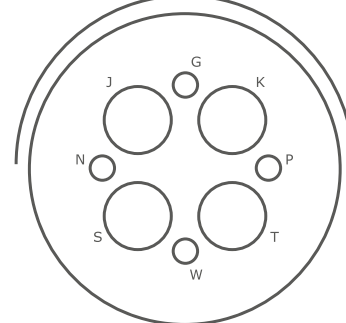
32A-9

Arrangement	32A-9
Total contacts	9
Contact type(s)	Size 4 (3) Size 16 (6)
Service rating	A



32-5

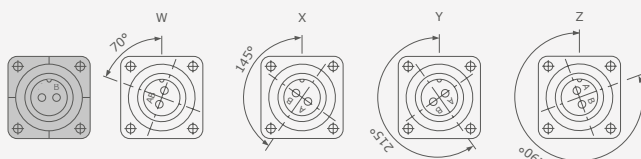
Arrangement	32-5
Total contacts	2
Contact type(s)	Size 0
Service rating	D



40A-10

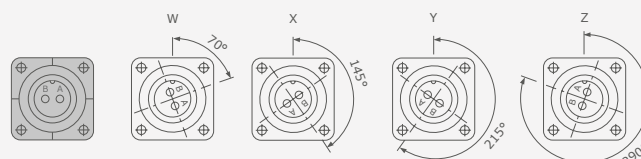
Arrangement	40A-10
Total contacts	8
Contact type(s)	Size 4 (4) Size 16 (4)
Service rating	D

Alternate insert rotations



Example 1

Front view - Mating side - Female insert shell rotation



Example 1

Front view - Mating side - Male insert shell rotation

Rotation degrees alternate insert rotations

Insert type	16S-1	16-10	20-15	22-1	22-2	22-22	24-2	24-11	28A-9	28-22	28-3	28-6	28-10	32A-9	32-5	40A-10
W	80	90	80	35	70	-	80	35	110	70	70	70	80	65	35	-
X	-	180	-	110	145	110	-	110	250	145	145	145	110	135	110	-
Y	-	270	-	250	215	250	-	250	260	215	215	215	250	225	250	-
Z	280	-	280	325	290	-	280	325	280	290	290	290	280	275	325	-

Contacts for SB series

The secret behind a high quality connection

Male and female contacts | Silver - Solder
Size 16S - 16 - 12 - 8 - 4 - 0

FEMALE contacts



SILVER solder | size 16S
For arrangement type:
16S-1
Part No. **SVKP16SFSs**



SILVER solder | size 12
For arrangement type:
16-10, 20-15, 24-11, 24-2, 28-10
Part No. **SVKP12SFS**



SILVER solder | size 4
For arrangement type:
28A-9, 28-22, 28-6, 28-10, 32A-9, 40A-10
Part No. **SVKP04SFS**



SILVER solder | size 16
For arrangement type:
28A-9, 28-22, 32A-9, 40A-10
Part No. **SVKP16SFS**



SILVER solder | size 8
For arrangement type:
22-1, 22-2, 24-11, 28-3, 28-10
Part No. **SVKP08SFS**



SILVER solder | size 0
For arrangement type:
32-5
Part No. **SVKP00SFS**

MALE contacts



SILVER solder | size 16S
For arrangement type:
16S-1
Part No. **SVKP16SMSs**



SILVER solder | size 12
For arrangement type:
16-10, 20-15, 24-11, 24-2, 28-10
Part No. **SVKP12SMS**



SILVER solder | size 4
For arrangement type:
28A-9, 28-22, 28-6, 28-10, 32A-9, 40A-10
Part No. **SVKP04SMS**



SILVER solder | size 16
For arrangement type:
28A-9, 28-22, 32A-9, 40A-10
Part No. **SVKP12SMS**



SILVER solder | size 8
For arrangement type:
22-1, 22-2, 24-11, 28-3, 28-10
Part No. **SVKP08SMS**



SILVER solder | size 0
For arrangement type:
32-5
Part No. **SVKP00SMS**

Insert service rating

Standard at sea level

Service rating	Operating voltage DC	Operating voltage AC
I	250 V	200 V
A	700 V	500 V
D	1250 V	900 V
E	1750 V	1250 V
B	2450 V	1750 V
C	4200 V	3000 V

Contacts rating

Size 0 - 4 - 8 - 12 - 16 - 16S contacts

Size	Max current	Rated current	Max voltage drop	Wire section (mm ²)	Wire section AWG
0	245 A	150 A	53 mV	50÷60	0
4	135 A	80 A	85 mV	16÷20	4
8	73 A	46 A	65 mV	6÷8	8
12	41 A	23 A	63 mV	3	12
16	22 A	13 A	74 mV	1÷1,5	16
16S	22 A	13 A	74 mV	1÷1,5	16

Dielectric strength

Standard at sea level

Service rating	Minimum Flashover AC MS	Test voltage AC RMS (Hi Pot)
I	1400 V	1000 V
A	2800 V	2000 V
D	3600 V	2800 V
E	4500 V	3500 V
B	5700 V	4500 V
C	8500 V	7000 V



Cable protection and management

Wire mesh strain reliefs, hanger grips and pulling grips

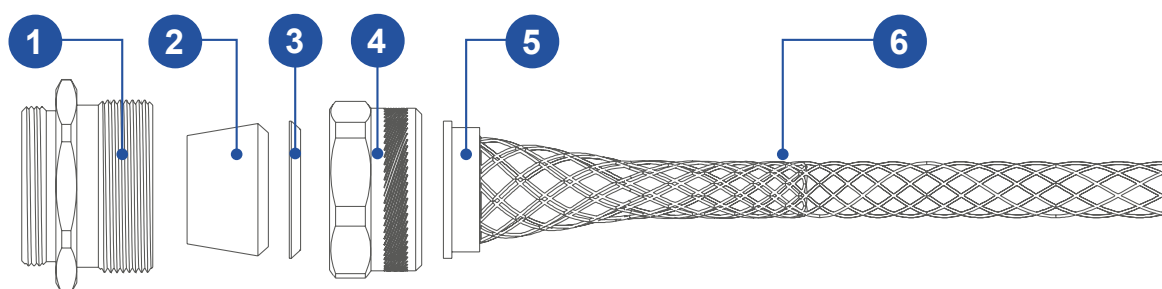
Explore our full range of wire mesh cable management solutions for our Syntax connectors, designed to ease optimal cable laying and organization and to provide protection from excessive bending due to gravity or any unwanted external force, in order to sensibly increase the life span of your connections.

Wire mesh strain relief

Preserve the integrity of your connections

These cable grips, sometimes referred to as “basket weave”, are made up of a woven steel wire mesh and a watertight gland nut. This strain relief system is designed to be anti-bending, offering the following key benefits:

- **Impossibility to pull out the cable from the strain relief through lateral force; the more the cable is pulled the tighter the grip becomes.**
- **Prevention of cable damage caused by flexing. Such a grip design is suited for large diameter cables which require a better protection of the internal conductors.**



1. Threaded body | 2. Grommet | 3. Friction ring | 4. Compression nut | 5. Rings | 6. Wire mesh

Available models

Part N.	Thread size	Cable range
7ZK20A095B127	M 20 x 1.5	Ø 9.5 to 12.7 mm (.374" to .500")
7ZK20A1275B1587	M 20 x 1.5	Ø 12.7 to 15.8 mm (.500" to .625")
7ZK25A1275B1587	M 25 x 1.5	Ø 12.7 to 15.8 mm (.500" to .625")
7ZK32A127B158	M 32 x 1.5	Ø 12.7 to 15.8 mm (.500" to .625")
7ZK32A158B1905	M 32 x 1.5	Ø 15.8 to 19.0 mm (.625" to .750")
7ZK32A1905B2222	M 32 x 1.5	Ø 19.0 to 22.2 mm (.750" to .875")
7ZK40A1905B2222	M 40 x 1.5	Ø 19.0 to 22.2 mm (.750" to .875")
7ZK40A222B254	M 40 x 1.5	Ø 22.2 to 25.4 mm (.875" to 1.000")
7ZK40A254B2857	M 40 x 1.5	Ø 25.4 to 28.5 mm (1.000" to 1.125")
7ZK40A2857B3175	M 40 x 1.5	Ø 28.5 to 31.7 mm (1.125" to 1.250")

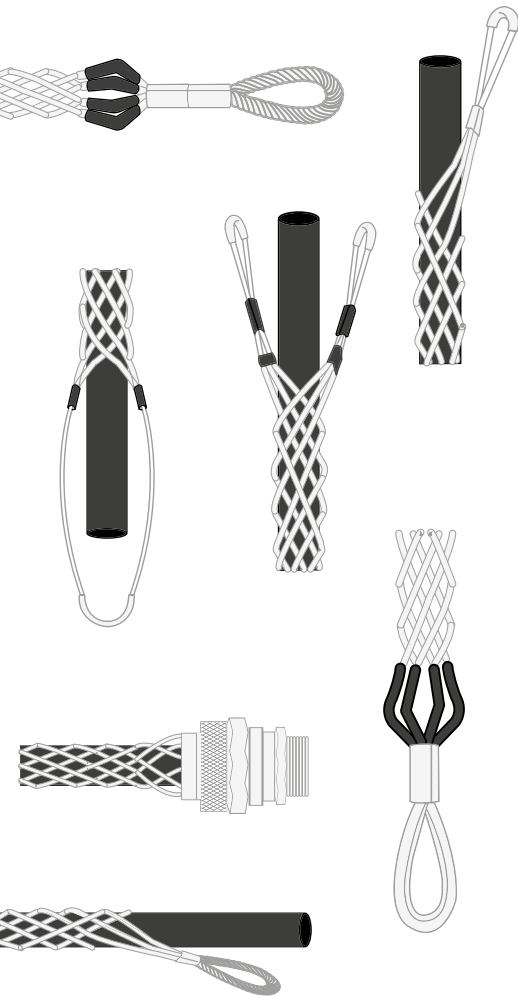


For a perfect connection you'll need more than a great connector

Discover our cable management solutions

The quality of a connection depends on many factors. There's the connector, of course, and the cables are a top priority too. Not just in terms of production quality and the materials involved, but also in many aspects of the job that must not be overlooked. How you lay a cable, how you protect it from unwanted stresses, how you make sure it will be safe from external elements over time, these decisions are all integral to the achievement of a reliable connection.

That's why we offer you quality accessories thoughtfully designed and manufactured for all your cable management, handling and protection needs.



Strain Reliefs

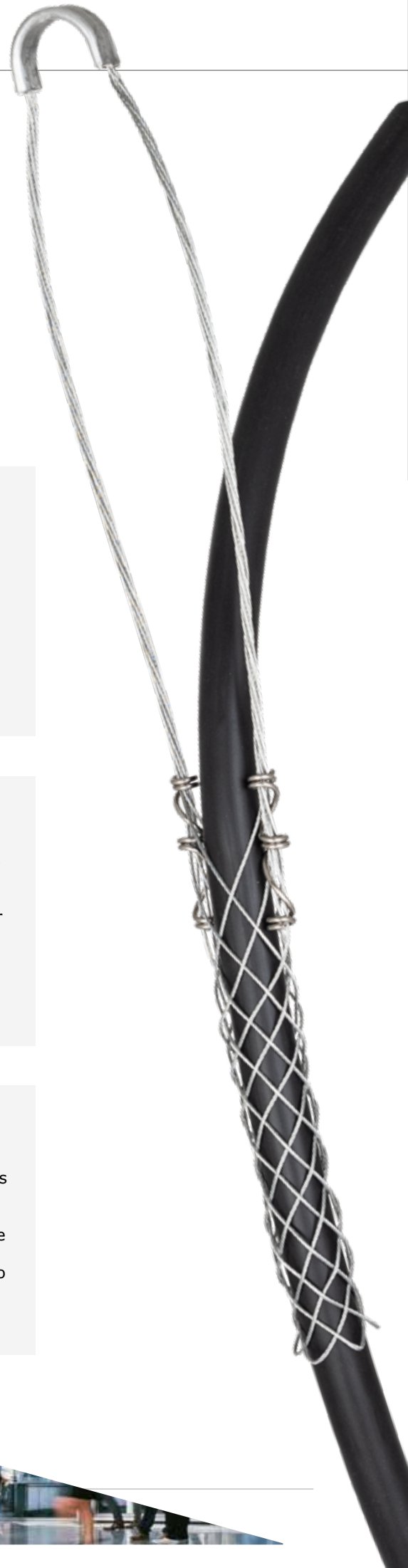
Thoughtfully designed to reduce tension on cables and, therefore, stress related damages to your connections due to excessive bending. Available in a wide range of thread sizes and overall diameters to fit any connector and cable combination.

Hanger grips

Heavy duty wire mesh hangers are designed to ensure optimal support and right retention of the cable without any sliding or scraping of the external jacket. Different styles and sizes are available in stock for any kind of application, both indoors or outdoors.

Pulling grips

Created to provide the operators an efficient way to pull cables through ducts or other spaces in the safest possible way. Made to be extremely resistant and conveniently reusable, and fit to a large number of applications. Different models available.





IP67 protective caps

Waterproof your connectors

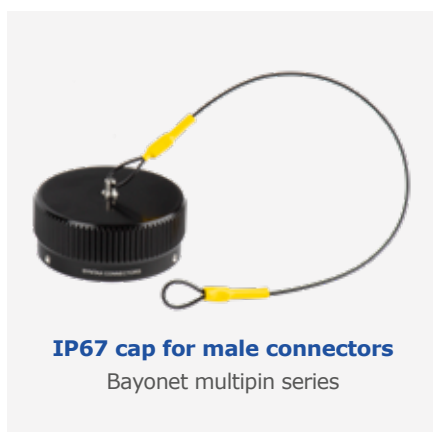
For Syntax® Bayonet multipin series connectors.

Male and female versions.

Our IP67 caps ensure complete waterproof protection

Environmental caps are available on request and provide complete IP67 protection on unmated connectors. The use of protective caps results in:

- Extended life span of the connectors as the mating threads are protected against damage from impacts;
- Improved safety as contacts are protected against dust and water even when the connectors are not mated.



Size	Series	Connector versions	Part No. cap for female	Part No. cap for male
18	SPK	4 pin	SPK004TFSC	SPK004TMSC
20	SVK - SHD	13 - 19 pin	SVK013TFSC	SVK013TMSC
20	SB	20-15	SVK013TFSC	SVK013TMSC
22	SPK	8 pin	SPK008TFSC	SPK008TMSC
22	SB	22-1 22-2 22-22	SPK008TFSC	SPK008TMSC
24	SVK - SHD	25 pin	SVK025TFSC	SVK025TMSC
24	SB	24-11 24-2	SVK025TFSC	SVK025TMSC
28	SVK - SHD	37 pin	SVK037TFSC	SVK037TMSC
28	SVS	72 pin	SVK037TFSC	SVK037TMSC
28	SV	-	SVK037TFSC	SVK037TMSC
28	SB	28A-9 28-22 28-3 28-6 28-10	SVK037TFSC	SVK037TMSC
32	SVK - SHD	54 pin	SVK054TFSC	SVK054TMSC
32	SVS	101 pin	SVK054TFSC	SVK054TMSC
32	SB	32A-9 32-5	SVK054TFSC	SVK054TMSC
40	SVK - SHD	85 100 150 pin	SVK085TFSC	SVK085TMSC
40	SB	40A-10	SVK085TFSC	SVK085TMSC

Syntax® Cable Glands

For Bayonet multipin series

Plastic metric cable glands,
standard or spiral flex,
metal cable glands



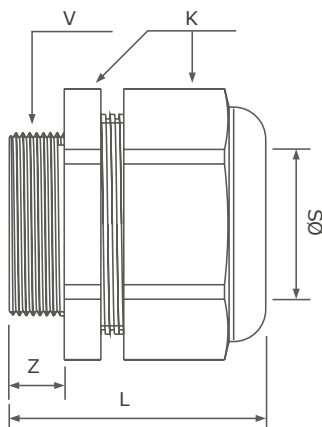
Metric cable gland

Our metric cable glands are designed for a perfect grip and effortless spanner tight seal. Provided with Neoprene Seal for a perfect IP68 - 5 bar watertight sealing; Blade System for optimal strain relief and cable protection combined with a generous clamping range; multiple threads for secure and rapid assembly. The cable clamping system has been designed not to come loose in case of cord vibration or torsion. Cable gland types and clamping ranges vary according to connector size.

Available models

for plastic metric cable gland

Code	Thread size	Model type	Length of thread	Clamping range	Spanner size	Part No.
ME	M 16 x 1.5	Normal	8.0	4.5 - 10.0	SW 19	7ZM16N
MH	M 20 x 1.5	Normal	15.0	6.0 - 12.0	SW 24	7ZM20LN
MI	M 20 x 1.5	Oversize	15.0	10.0 - 14.0	SW 27	7ZM20EL
MJ	M 25 x 1.5	Reduced	15.0	6.0 - 13.0	SW 30	7ZM25LRN
ML	M 25 x 1.5	Oversize	15.0	13.0 - 18.0	SW 33	7ZM25EL
MN	M 32 x 1.5	Reduced	15.0	7.0 - 15.0	SW 36	7ZM32LRN
MM	M 32 x 1.5	Normal	15.0	11.0 - 21.0	SW 36	7ZM32LN
MO	M 32 x 1.5	Oversize	15.0	18.0 - 25.0	SW 42	7ZM32EL
MQ	M 40 x 1.5	Reduced	18.0	15.0 - 23.0	SW 46	7ZM40LRN
MP	M 40 x 1.5	Normal	18.0	19.0 - 28.0	SW 46	7ZM40LN
MR	M 40 x 1.5	Oversize	18.0	22.0 - 32.0	SW 53	7ZM40EL
MT	M 50 x 1.5	Normal	18.0	27.0 - 35.0	SW 55	7ZM50LN
MU	M 50 x 1.5	Oversize	18.0	30.0 - 38.0	SW 60	7ZM50EL
MW	M 63 x 1.5	Normal	18.0	34.0 - 45.0	SW 66	7ZM63LN



Cable Clamp - Metric

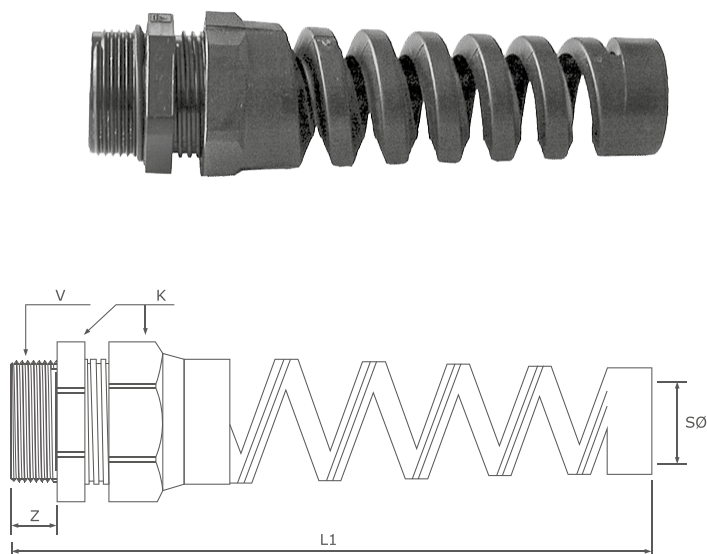
V (thread size)	Ø S (clamping range)	K	Z	L
M 20 x 1.5	6 - 12 mm	25 mm	9 mm	37 mm
M 20 x 1.5	7 - 13 mm	25 mm	9 mm	37 mm
M 20 x 1.5	10 - 14 mm	25 mm	9 mm	37 mm
M 25 x 1.5	8 - 13 mm	30 mm	10 mm	40 mm
M 25 x 1.5	9 - 17 mm	30 mm	10 mm	40 mm
M 25 x 1.5	13 - 18 mm	30 mm	10 mm	40 mm
M 32 x 1.5	7 - 15 mm	36 mm	10 mm	47 mm
M 32 x 1.5	11 - 21 mm	36 mm	10 mm	47 mm
M 32 x 1.5	18 - 25 mm	36 mm	10 mm	47 mm
M 40 x 1.5	15 - 23 mm	46 mm	10 mm	52 mm
M 40 x 1.5	19 - 28 mm	46 mm	10 mm	52 mm
M 40 x 1.5	22 - 32 mm	46 mm	10 mm	52 mm
M 50 Grommet	Spider 27 - 35 mm	55 mm	12 mm	62 mm

Plastic spiral gland with metric thread

The spiral gland prevents the cable from damage caused by bending at the connector-cable interface. Therefore, it is commonly used with audio cable, where small signal conductors can be easily damaged.

Cable Clamp - Metric

V	Ø S	K	Z	L1
(thread size)	(clamping range)			
M 20 x 1.5	6 - 12 mm	25 mm	9 mm	101 mm
M 20 x 1.5	7 - 13 mm	25 mm	9 mm	101 mm
M 20 x 1.5	10 - 14 mm	25 mm	9 mm	101 mm
M 25 x 1.5	8 - 13 mm	30 mm	10 mm	125 mm
M 25 x 1.5	9 - 17 mm	30 mm	10 mm	125 mm
M 25 x 1.5	13 - 18 mm	30 mm	10 mm	125 mm
M 32 x 1.5	7 - 15 mm	36 mm	10 mm	149 mm
M 32 x 1.5	11 - 21 mm	36 mm	10 mm	149 mm
M 32 x 1.5	18 - 25 mm	36 mm	10 mm	149 mm



Backshell and metal cable gland for the Syntax® SB Series

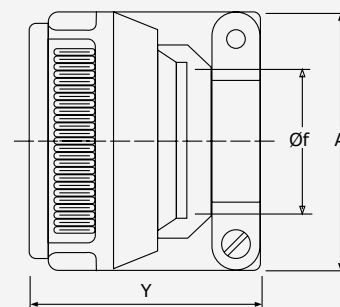
Besides ensuring an excellent mechanical strain relief keeping the cable in the centre of the connector, metal cable glands are provided with an internal rubber cone bushing ensuring IP67 waterproof protection. The screws in stainless steel have elastic anti-vibration washers. Clamping range varies according to connector size as shown in the following table.



Models and dimensions

Dimensions in mm

C	Code	Clamping Range ØF	Y Max	A ±0.2	Arrangement types
8C	C3	8-13.58	32.3	28.1	16S-1 / 16-10
12C	C5	11.3-19	35.7	37.3	20-15 / 22-1 / 22-2 / 22-22
16C	C6	15.5-23.8	39	43.2	24-2 / 24-11 / 28A-9 / 28-22 / 28-3 / 28-6 / 28-10
20C	C7	23.4-31.8	44.8	54	32A-9 / 32-5
28C	C9	30-41.3	52.3	63.4	40A-10



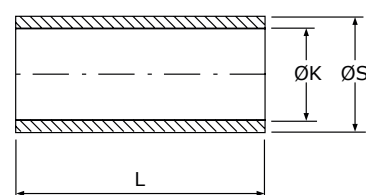
Bushing

Bushing is made of elastometric rubber and used with the metal cable clamp. It allows the use of cables with a diameter smaller than the nominal one.

Models and dimensions

Dimensions in mm

Part No.	For metal clamp	ØS	ØK Open	ØK Closed	L
SBBC3	C3	13.6	11.1	5.6	50.8
SBBC5	C5	18.9	13.74	6.85	50.8
SBBC6	C6	23.7	19	10.9	50.8
SBBC7	C7	31.6	23.8	15.74	50.8
SBBC9	C9	41.1	31.75	20.7	50.8





Found your connector? Now pick the cable!

Cables for Bayonet connectors series

Flexible, easy to handle, all in one professional cables for almost limitless applications. Robust and super easy for fast wiring.

Syntax Analog cables
Syntax Digital cables
Syntax Speaker cables
Syntax Hybrid Cable

Syntax cables

compatible with SVK - SHD and SVS series



Analog Cables

Part No.	Pair	Diameter	Series
7YPR04SX	4	9,6	SVK - SHD
7YPR08SX	8	12,2	SVK - SHD
7YPR12SX	12	14,5	SVK - SHD
7YPR16SX	16	16,3	SVK - SHD
7YPR24SX	24	20,8	SVK - SHD - SVS
7YPR32SX	32	22,8	SVK - SHD - SVS
7YPR40SX	40	25,2	SVK - SHD
7YPR48SX	48	27,0	SVK - SHD

Digital Cables

Part No.	Pair	Diameter	Series
7YDPR02SX	2	9,6	SVK - SHD
7YDPR04SX	4	11,2	SVK - SHD
7YDPR08SX	8	14,8	SVK - SHD
7YDPR0814SX	8	13	SVK - SHD
7YDPR0814SXPUR	8	13	SVK - SHD
7YDPR12SX	12	17,4	SVK - SHD
7YDPR1214SX	12	17,0	SVK - SHD
7YDPR1214SXPUR	12	16,5	SVK - SHD
7YDPR16SX	16	19,5	SVK - SHD



Syntax cables

compatible with SPK

Speaker Cables

Part No.	Wires	Diameter	Series
7Z2SX25	2	8,8	SPK 25 pin
7Z2SX40	2	11,4	SPK 8, 25 pin
7Z4SX25	4	10,5	SPK 4 and 8 pin
7Z4SX40	4	13,5	SPK 4, 25 pin
7Z8SX25	8	14	SPK 8 pin
7Z8SX40	8	20	SPK 8, 25 pin
7Z24SX40	24	27,5	SPK 25 pin



Syntax cables

compatible with SV series

Hybrid Cable

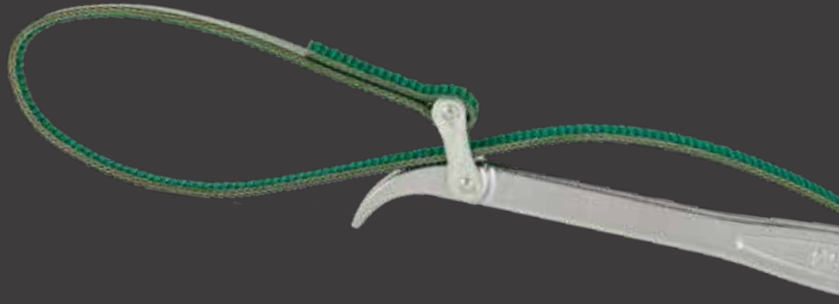
6 x video + 8 x digital | Diameter Ø 24,5 mm
Part No. **7YVD6DG8HD**



Syntax® Tools

Essential to connecting

Tools for crimping, insertion & removal of contacts and tightening tools for Syntax® Bayonet multipin connectors series.



Manual crimping tool

The manual crimping tool AF8 is compliant with MIL-DTL-22520/1 and AS22520/1. It is suitable for all wire gages from 12 to 26 AWG. The 8-point crimping of the AF8 tool ensures maximum strength and resistance on the crimped connection. Special indent configurations and gaging are available on request. For proper operation, the tool must be used with a military standard turret positioner. The turret is easily fitted on the crimping tool by orienting the head in the keyed position, and by tightening the hex socket screws supplied with the turret. The precision ratchet controls cycling of the tool in both directions of handle movement. This ensure the same accurate crimp every time. Positive crimp depth is controlled by an 8 position selector knob conveniently located on the tool frame. The operator will just need to select the setting for the wire being used. The setting can be secured by use of a locking pin or safety wire. Periodic gaging is recommended to ensure accurate calibration. Other than keeping the unit clean and properly stored when not in service, no operator maintenance is required.



Manual crimping tool
Part No. **SVKTCRIMP**

Turret positioner
Part No. **SVKTOR**

Pneumatic crimp tool

For 12-16-18-20 contact size

Our pneumatic crimping tools are well known for their unequalled reputation for trouble-free, cost saving and adaptability both in military and industrial programs. Whether upper, middle or lower range, the power tools fulfill the same precise crimping requirements as the manual versions. No additional operator training is necessary. The compact size and light weight of these tools allows them to be used easily as hand tools, as well as high production bench tools. The hand trigger is designed for equal ease of use by right or left handed operators. Bench mounted, the optional foot valve allows hands-free operation. The bench mount allows the tool to be secured at virtually any angle at the operator's will. The foot valve, when installed in-line with an air supply, makes a portable system which is adaptable to any work bench. Air supply requirements are 5.5 to 8.0 atmospheres clean dry air. The system uses standard air fitting readily available in stores.



Pneumatic crimp
Part Number **SVKTCRIMP-A**



Foot valve
Part Number **SVKTCRIMP-B**



Adjustable bench mount
Part Number **SVKTCRIMP-C**

Hydraulic crimping tool 45kN

For contacts size 4 and size 8

Lightweight and compact, this tool is ideal to crimp connectors on overhead lines and general electric applications. Thanks to spring loaded handles, you can use the tool and crimp contacts with just one hand, with the other hand free to position the connector. For easier operations, the tool head can be rotated by 180 degrees. The built-in safety valve will bypass the oil supply when the maximum pressure is reached. The pressure release system can be easily operated at any stage of the compression.

Part No. **SBH-CRIMP-A**

Crimping accessories

*suitable for SGH Capsulock 32 amp

SBH	ME1	for cable 4 to 6 mm ²
SBH	ME2	for cable 10 mm ²
SBH	ME3	for cable 16 mm ²
SBH	ME5	for cable 25 mm ²



Insertion tools

Insertion tools for male and female contacts (using guide pins is recommended for female contacts).

Part No. **SVKTINS12**

Part No. **SVKTINS16**

Part No. **SVKTINS18/20**



Removal tool

Only use the recommended removal tool to remove a contact or adjust its position in the cavity.

Part No. **SVKTESTR11**

Part No. **SVKTESTR12**

Part No. **SVKTESTR16**



Customized wrench

Part Number **SVKT - KSW**



Strap wrench

Part Number **SVKT - KSTRAP**

Tightening tools

Once wiring is carried out, the connector can be easily locked with our customized wrench or the strap wrench, which provides best grip on circular knurling.

Guide pins for female contacts

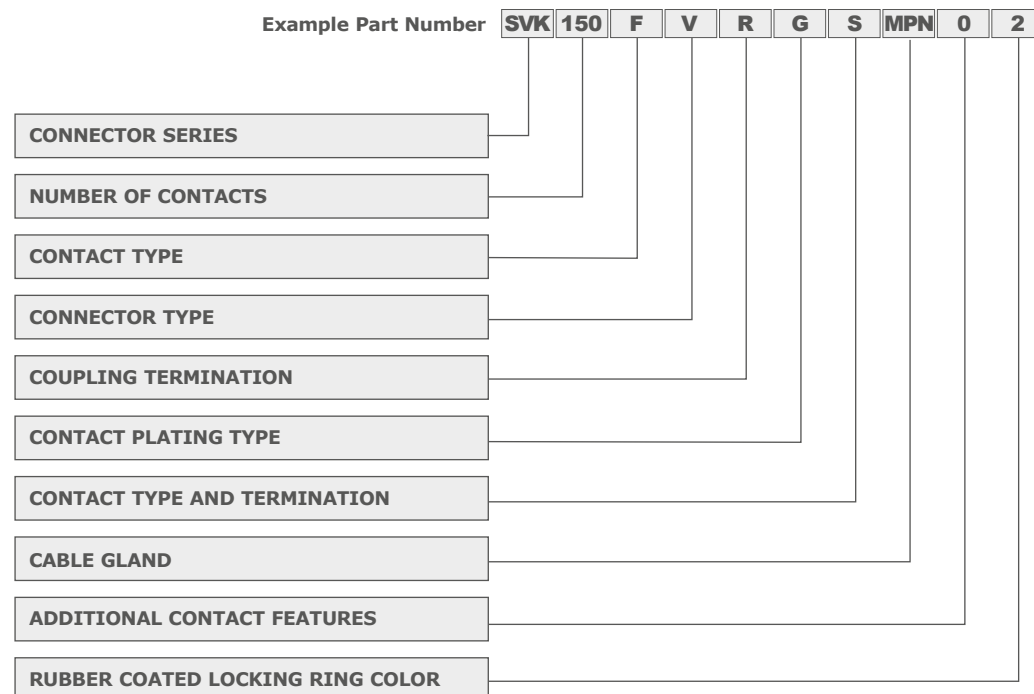
Guide pins are used to insert female contacts only. Remove the guide pin from the inserted contact and use it for the next contact.

Part No. **SVKT20GP | SVKT18GP | SVKT16GP
SVKT12GP | SVKT59GP**



PART NUMBER EXPLANATION

SVK Series



Connector Series

SVK Series (13, 19, 25, 37, 54, 85, 100, 150 pin)

Number of Contacts

013 **054**
019 **085**
025 **100**
037 **150**

Contact Type

M Male
F Female

Connector Type

V Inline
P Panel

Coupling Termination

- With ramps
H Aluminium black locking ring
R Rubber coated locking ring

Contact Plating Type

S Silver (13, 19, 25, 37, 54, 85 pin)
G Gold (13, 19, 25, 37, 54, 85, 100, 150 pin)
N No contact

Contact type and termination

C Spring loaded crimp (13, 19, 25, 37, 54, 85 pin)
S Spring loaded solder (13, 19, 25, 37, 54, 85 pin)
P Spring loaded pcb (13, 19, 25, 37, 54, 85 pin)
N No contact
K Armored crimp contact (13, 19, 25, 37, 54, 85, 100, 150 pin)
Z Armored solder contact (13, 19, 25, 37, 54, 85, 100, 150 pin)

Cable gland

MHN Thread size M20 x 1.5 | Clamping range 6-12mm (SVK 13-19 pins)
MIN Thread size M20 x 1.5 | Clamping range 10-14mm (SVK 13-19 pins)
MJN Thread size M25 x 1.5 | Clamping range 6-13mm (SVK 25 pins)

MLN Thread size M25 x 1.5 | Clamping range 13-18mm (SVK 25 pins)
MNN Thread size M32 x 1.5 | Clamping range 7-15mm (SVK 37-54 pins)
MMN Thread size M32 x 1.5 | Clamping range 11-21mm (SVK 37-54 pins)
MON Thread size M32 x 1.5 | Clamping range 18-25mm (SVK 37-54 pins)
MQN Thread size M40 x 1.5 | Clamping range 15-23mm (SVK 85-100-150 pins)
MPN Thread size M40 x 1.5 | Clamping range 19-28mm (SVK 85-100-150 pins)
MRN Thread size M40 x 1.5 | Clamping range 22-32mm (SVK 85-100-150 pins)
MSF Metric spiral flex (SVK 13-19-25-37-54 - Check clamping range options before ordering)
M00 Without cable gland

Additional contact features

T Inserted solder termination contacts
0 Not pre-installed
2 Reduced crimp terminal (Wire section AWG 26÷20 / 0,15÷0,6mm²)

Rubber coated locking ring color (when applicable)

0 Black (standard)
1 Green
2 Red
3 Yellow
4 Blue

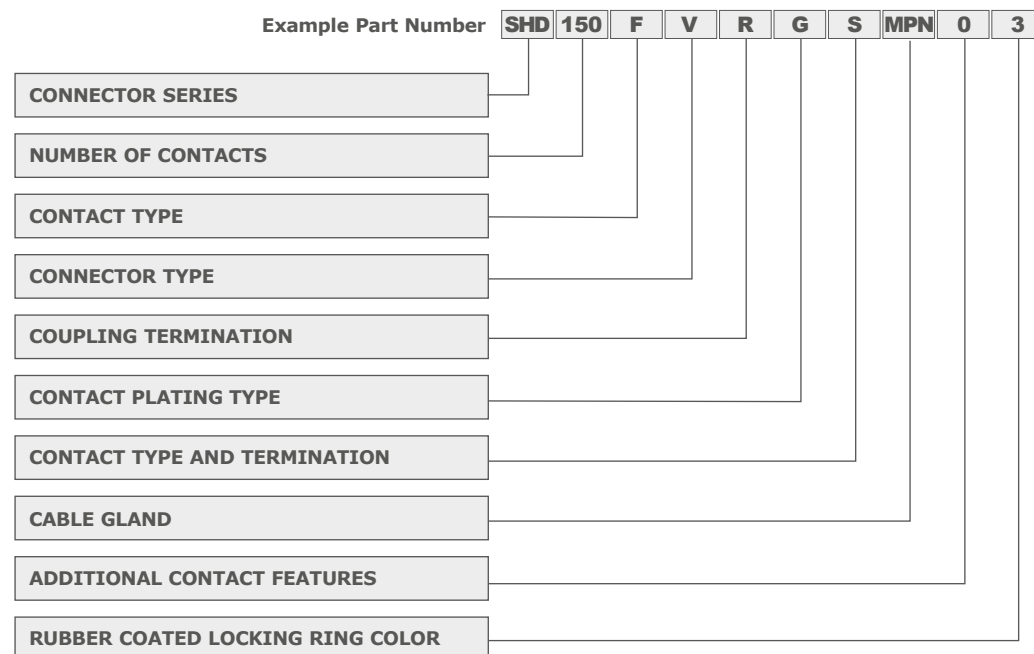
Optional Accessories (to be ordered separately)

Strain Relief (other models available, see website)

7ZK20A096B127 M20 x 1.5 Ø 9.53 to 12.70 mm (.375" to .500")
7ZK20A127B158 M20 x 1.5 Ø 12.70 to 15.88 mm (.500" to .625")
7ZK25A127B158 M25 x 1.5 Ø 12.70 to 15.88 mm (.500" to .625")
7ZK32A112B140 M32 x 1.5 Ø 11.2 to 14.0 mm (.44" to .56")
7ZK32A142B175 M32 x 1.5 Ø 14.2 to 17.5 mm (.56" to .69")
7ZK32A160B191 M32 x 1.5 Ø 16.0 to 19.1 mm (.63" to .75")
7ZK32A191B224 M32 x 1.5 Ø 19.1 to 22.4 mm (.75" to .88")
7ZK40A191B224 M40 x 1.5 Ø 19.1 to 22.4 mm (.75" to .88")
7ZK40A224B254 M40 x 1.5 Ø 22.4 to 25.4 mm (.88" to 1.00")
7ZK40A254B285 M40 x 1.5 Ø 25.4 to 28.58 mm (1.00" to 1.125")
7ZK40A286B317 M40 x 1.5 Ø 28.58 to 31.75 mm (1.125" to 1.250")

PART NUMBER EXPLANATION

SHD Series



Connector Series

SHD Series (Inline female - Inline male - Panel female)

SVK Series (Panel male)

Number of Contacts

013

019

025

037

054

085

100

150

Contact Type

M Male

F Female

Connector Type

V Inline

P Panel

Coupling Termination

- With ramps

D Heavy-duty aluminium black locking ring

R Rubber coated locking ring

Contact plating type

S Silver (13, 19, 25, 37, 54, 85 pin)

G Gold (13, 19, 25, 37, 54, 85 pin)

N No contact

Contact Type and Termination

C Spring loaded crimp (13, 19, 25, 37, 54, 85 pin)

S Spring loaded solder (13, 19, 25, 37, 54, 85 pin)

P Spring loaded pcb (13, 19, 25, 37, 54, 85 pin)

N No contact

K Armored crimp contact

(13, 19, 25, 37, 54, 72, 85, 100, 101, 150 pin)

Z Armored solder contact

(13, 19, 25, 37, 54, 72, 85, 100, 101, 150 pin)

Cable gland

MHN Thread size M20 x 1.5 | Clamping range 6-12mm (13-19 pin)

MIN Thread size M20 x 1.5 | Clamping range 10-14mm (13-19 pin)

MJN Thread size M25 x 1.5 | Clamping range 6-13mm (25 pin)

MLN Thread size M25 x 1.5 | Clamping range 13-18mm (25 pin)

MNN Thread size M32 x 1.5 | Clamping range 7-15mm (37-54 pin)

MMN Thread size M32 x 1.5 | Clamping range 11-21mm (37-54 pin)

MON Thread size M32 x 1.5 | Clamping range 18-25mm (37-54 pin)

MQN Thread size M40 x 1.5 | Clamping range 15-23mm (85-100-150 pin)

MPN Thread size M40 x 1.5 | Clamping range 19-28mm (85-100-150 pin)

MRN Thread size M40 x 1.5 | Clamping range 22-32mm (85-100-150 pin)

MSF Metric spiral flex (13-19-25-37-54 pin - Check clamping range options before ordering)

M00 Without cable gland

Additional contact features

T Inserted solder termination contacts

0 Not pre-installed

2 Reduced crimp terminal (Wire section AWG 26÷20 / 0,15÷0,6mm²)

Rubber coated locking ring color (when applicable)

0 Black (standard)

1 Green

2 Red

3 Yellow

4 Blue

Optional Accessories (to be ordered separately)

Strain Relief (other models available, see website)

7ZK20A096B127 M20 x 1.5 Ø 9.53 to 12.70 mm (.375" to .500")

7ZK20A127B158 M20 x 1.5 Ø 12.70 to 15.88 mm (.500" to .625")

7ZK25A127B158 M25 x 1.5 Ø 12.70 to 15.88 mm (.500" to .625")

7ZK32A112B140 M32 x 1.5 Ø 11.2 to 14.0 mm (.44" to .56")

7ZK32A142B175 M32 x 1.5 Ø 14.2 to 17.5 mm (.56" to .69")

7ZK32A160B191 M32 x 1.5 Ø 16.0 to 19.1 mm (.63" to .75")

7ZK32A191B224 M32 x 1.5 Ø 19.1 to 22.4 mm (.75" to .88")

7ZK40A191B224 M40 x 1.5 Ø 19.1 to 22.4 mm (.75" to .88")

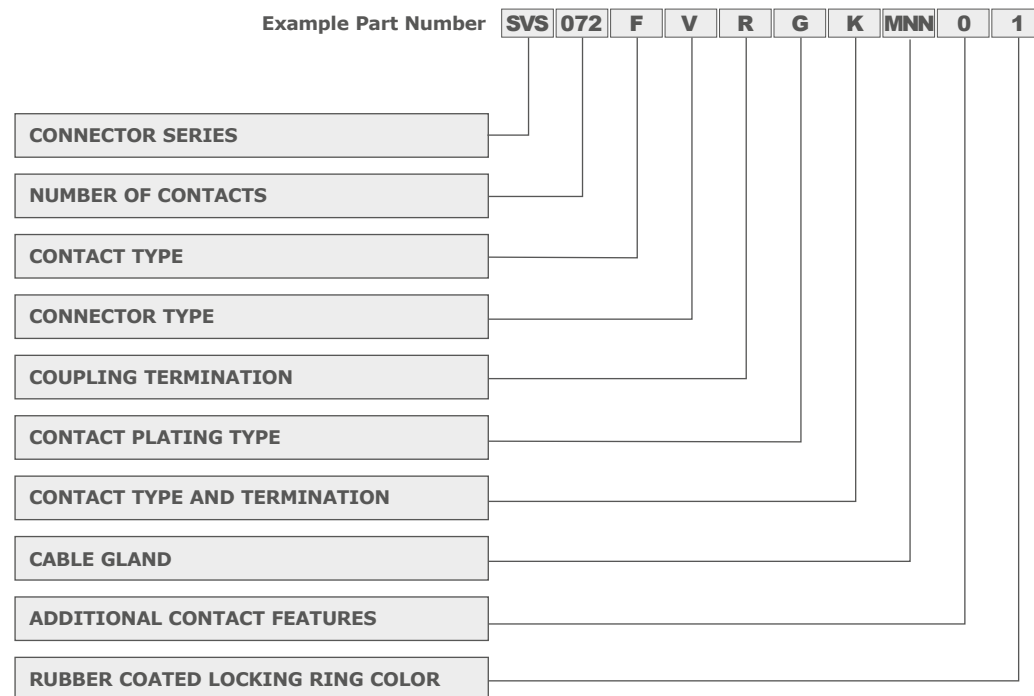
7ZK40A224B254 M40 x 1.5 Ø 22.4 to 25.4 mm (.88" to 1.00")

7ZK40A254B285 M40 x 1.5 Ø 25.4 to 28.58 mm (1.00" to 1.125")

7ZK40A286B317 M40 x 1.5 Ø 28.58 to 31.75 mm (1.125" to 1.250")

PART NUMBER EXPLANATION

SVS Series



Connector Series

SVS Series (72, 101 pin)

Number of Contacts

072

101

Contact Type

M Male

F Female

Connector Type

V Inline

P Panel

Coupling Termination

- With ramps

H Aluminium black locking ring

R Rubber coated locking ring

Contact Plating Type

G Gold (72, 101 pin)

N No contact

Contact type and termination

N No contact

K Armored crimp contact (72, 101 pin)

Z Armored solder contact (72, 101 pin)

Cable gland

MNN Thread size M32 x 1.5 | Clamping range 7-15mm (SVS 72-101 pins)

MMN Thread size M32 x 1.5 | Clamping range 11-21mm (SVS 72-101 pins)

MON Thread size M32 x 1.5 | Clamping range 18-25mm (SVS 72-101 pins)

MSF Metric spiral flex (Check clamping range options before ordering)

M00 Without cable gland

Additional contact features

T Inserted solder termination contacts

0 Not pre-installed

Rubber coated locking ring color (when applicable)

0 Black (standard)

1 Green

2 Red

3 Yellow

4 Blue

Optional Accessories (to be ordered separately)

Strain Relief (other models available, see website)

7ZK32A112B140 M32 x 1.5 Ø 11.2 to 14.0 mm (.44" to .56")

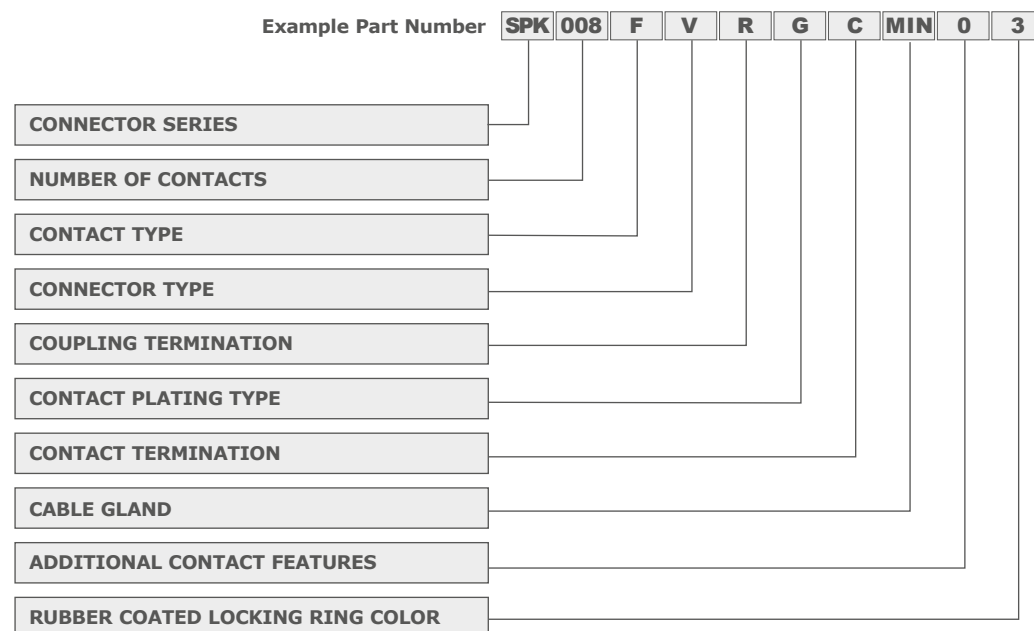
7ZK32A142B175 M32 x 1.5 Ø 14.2 to 17.5 mm (.56" to .69")

7ZK32A160B191 M32 x 1.5 Ø 16.0 to 19.1 mm (.63" to .75")

7ZK32A191B224 M32 x 1.5 Ø 19.1 to 22.4 mm (.75" to .88")

PART NUMBER EXPLANATION

SPK Speaker Series



Connector Series

SPK Series (4, 8, 25 pin compliant Mil C5015 & VG95234)

Number of Contacts

004
008
025

Contact Type

M Male **F** Female

Connector Type

V Inline **P** Panel

Coupling Termination

- With ramps (4, 8, 25 pin)
D Heavy-duty aluminium black locking ring (4, 25 pin)
L Aluminium black locking ring (8 pin)
R Rubber coated locking ring (8, 25 pin)

Contact Plating Type

S Silver **G** Gold **N** No contact

Contact Type and Termination

C Spring loaded crimp
S Spring loaded solder
P Spring loaded pcb
N No contact

Cable Gland (more options available)

MIN Metric M20x 1.5 Ø cable 10 - 14 mm (SPK 4 pin)
MMN Metric M32 x 1.5 Ø cable 11 - 21 mm (SPK 8 pin)
MON Metric M32 x 1.5 Ø cable 18 - 25 mm (SPK 8 pin)
MRN Metric M40 x 1.5 Ø cable 22 - 32 mm (SPK 25 pin)
MUN Metric M50 x 1.5 Ø cable 32 - 38 mm (SPK 25 pin)
MSF Metric spiral flex (4, 8 pins - Check clamping range options before ordering)
MF4 4-way grommet for M40 cable gland (only for 8 pin)
C5N 12C Metal cable gland (only for 8 pin)
M00 Without cable gland (4, 8 pin)
M05 Without cable gland (M50 backshell version for SPK 25pin)
M04 Without cable gland (M40 backshell version for SPK 25pin)

Additional contact features

T Pre-installed solder contacts
0 Contacts not installed - No further details
4 4mm² Crimp terminal wire section
6 6mm² Crimp terminal wire section

Rubber coated locking ring color (when applicable)

0 Black (standard)
1 Green
2 Red
3 Yellow
4 Blue

Optional Accessories (to be ordered separately)

Grommet + adapter system (25 pin only)

SPK025AD-M63-3W M63 cable gland + adapter and 3-way grommet for SPK 25 pin (Ø hole 20 mm)
SPK025AD-M63-6W M63 cable gland + adapter and 6-way grommet for SPK 25 pin (Ø hole 14.5 mm)
SPK025AD-M63-12W M63 cable gland + adapter and 12-way grommet for SPK 25 pin (Ø hole 11.5 mm)
SPK025AD-M63-12W2 M63 cable gland + adapter and 12-way grommet for SPK 25 pin (Ø hole 9.5 mm)

Strain Relief (other models available, see website)

7ZK20A096B127 M20 x 1.5 Ø 9.53 to 12.70 mm (.375" to .500")
7ZK20A127B158 M20 x 1.5 Ø 12.70 to 15.88 mm (.500" to .625")
7ZK32A112B140 M32 x 1.5 Ø 11.2 to 14.0 mm (.44" to .56")
7ZK32A142B175 M32 x 1.5 Ø 14.2 to 17.5 mm (.56" to .69")
7ZK32A160B191 M32 x 1.5 Ø 16.0 to 19.1 mm (.63" to .75")
7ZK32A191B224 M32 x 1.5 Ø 19.1 to 22.4 mm (.75" to .88")
7ZK32A224B254 M32 x 1.5 Ø 22.4 to 25.4 mm (.88" to 1.00")
7ZK40A191B224 M40 x 1.5 Ø 19.1 to 22.4 mm (.75" to .88")
7ZK40A224B254 M40 x 1.5 Ø 22.4 to 25.4 mm (.88" to 1.00")
7ZK40A254B285 M40 x 1.5 Ø 25.4 to 28.58 mm (1.00" to 1.125")
7ZK40A286B317 M40 x 1.5 Ø 28.58 to 31.75 mm (1.125" to 1.250")
7ZK40A318B349 M40 x 1.5 Ø 31.75 to 34.92 mm (1.250" to 1.375")



Via Asti 84/A | 10098 Rivoli (TO) Italy
Tel: + 39 011 9594160

info@syntaxnet.it
www.valentininet.com



is a Valentini SRL registered trademark