

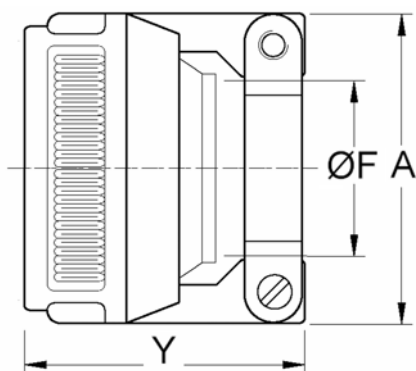
## SERRACAVO METALLICO

### GUSCIO POSTERIORE E SERRACAVO METALLICO...C

Tabella F

Versione Standard

Inserto	C	Cod.	Campo serraggio ØF		Y	A
			Min	Max	Max	±0.2
16S-1, 16-10	8C	C3	8	13.58	32.3	28.1
20-15, 22-1, 22-2, 22-22	12C	C5	11.3	19	35.7	37.3
24-2, 24-11, 28A-9, 28-22, 28-3, 28-6, 28-10	16C	C6	15.5	23.8	39	43.2
32A-9, 32-5	20C	C7	23.4	31.8	44.8	54
40A-10	28C	C9	30	41.3	52.3	63.4



### MANICOTTO

Tabella G

Manicotto Codice	Per serracavo metallico	ØS	ØK		L
			Aperto	Chiuso	
SBBC3	C3	13.6	11.1	5.6	50.8
SBBC5	C5	18.9	13.74	6.85	50.8
SBBC6	C6	23.7	19	10.9	50.8
SBBC7	C7	31.6	23.8	15.74	50.8
SBBC9	C9	41.1	31.75	20.7	50.8

